



UNION COUNTY Workforce Investment Board

**2012-2013
Annual
Report**



Index Page

The UCWIB Team Message	P 1
The UCWIB Team	
County Administration	P 2
Board of Directors – The Private Sector	P 3
Board of Directors	P 4
Program Standards	P 5
Program Services	P 6
Funded Programs	P 7
WIA Common Measures	P 8-9
WFNJ Participation Rate	P 10-11
Union County Key Growth Sectors	P 12-14
Executive Summary of the WIB Master Budget	P 15



2012-13 Annual Report

Department of Economic Development
Union County Workforce Investment Board
10 Elizabethtown Plaza, 4th Floor
Elizabeth, New Jersey 07207
Phone: (908) 527-4195
Fax: (908) 659-7406
www.ucnj.org/wib



The UCWIB Team Message

The Union County Workforce Investment Board and the Union County One Stop Career Center faced many headwinds in program year 2012-2013. In addition to the labor demands of maintaining an outstanding performance track in exceeding the Workforce Investment Act's Common Measures, the UCWIB team surpassed the state's average Participation Rate with respect to WorkFirst New Jersey programs.

The County of Union was impacted by Hurricane Sandy in October of 2012. In response, the UCWIB team successfully applied for and received National Emergency Grant (NEG) funds to develop and implement a countywide municipal clean-up effort. The NEG initiative created new jobs in the areas of debris removal and hurricane relief resource management.

Finally, the UCWIB team successfully immersed itself in the completion of the State Employment & Training Commission's 15-Point Recertification Application. Upon completion of the recertification process, the UCWIB team shall have a strategic direction in which to forge ahead. The 2013-2014 program year promises to become a transformative opportunity for the Union County Workforce delivery system.



2012-13 Annual Report



The UCWIB Team

County Administration

Sergio Granados, Freeholder Liaison

Alfred J. Faella, County Manager

William Reyes, Jr., Deputy County Manager &

Director Department of Economic Development

Frank Guzzo, Director, Department of Human Services

MaryAnn Anderson, One Stop Operations Manager

Antonio Rivera, MSW, Director, Workforce Investment Board

Phil Kandl, Senior Planner

Lisa Bonanno, Employment Specialist

Gina Tuesta, Clerk



2012-13 Annual Report



The UCWIB Team

Workforce Investment Board of Directors – The Private Sector

Glenn Nacion, WIB Chairman, Trinitas Regional Medical Center

Carlos Valdes, WIB Vice Chairman, Comcast

Erich Peter, WIB Secretary, Union County Economic Development Corp.

Gary Alessio, Print Tech

Elizabeth Bennett, Evergreen Partners, Inc.

Mark Bocchieri, Verizon New Jersey

James R. Brady, The Savor Group, LLC

Roberto Camacho, Investors Bank

Richard Capac, Leaf Group, LLC

Monica Chenault-Kilgore, The Chenault Group, Inc.

Alberto Goncalves, GS Developers, LLC

Donna A. Dedinsky, Wakefern Food Corporation

Juan Carlos Dominguez, JJJ Distributors

Gloria Durham, Genesis Healthcare Solutions

Eugenia Hamlett, Hamlett Management, LLC

Eileen Leahey, PSE&G

Anadir Liranzo, Omega Maintenance Corporation

Kevin Lynott, Elizabethtown Gas An AGL Resources Company

Kim McConnell, The McConnell Leadership Group

Sandy McLachlan, Phillips66 Bayway Refinery

Christopher Morreale, FedEx

Stan Robinson, Jr., SHR Marketing, LLC



2012-13 Annual Report

The UCWIB Team

Workforce Investment Board of Directors

John Perry, Council on Airport Opportunities

Noel Christmas, Utilities Workers Union of America, Local 601

Gary Pfarr, International Brotherhood of Electrical Workers, Local 102

Anna Belin-Pyles, Plainfield Public Schools

Pamela Capaci, HSAC Chair, Prevention Links

Peter Capodice, Union County Vocational Technical Schools

Phillip Connelly, Kean University

Dr. Margaret McMenamin, Union County College

Kathleen Serafino, Union County Superintendent of Schools

Pat Dobson, State of New Jersey, Employment Service

Charles Gillon, County of Union, Division of Social Services

Myrna Pinkney, State of New Jersey, Division of Vocational
Rehabilitation Services



2012-13 Annual Report

Program Standards



✓The Union County Workforce Investment Board will use any and all criteria established by the State Employment and Training Commission regarding skill level and competency guidelines to be used as a basis for the selection of skill training programs and competency curriculum in the local areas.

✓The Union County Workforce Investment Board shall align its workforce development strategy to mirror the core values outlined within New Jersey's Unified Workforce Investment Plan.

✓The core values include: (i) driving investments based on industry needs; (ii) meeting job seekers where they are; (iii) equipping the workforce for employment; and (iv) increasing system accountability.

✓The intent of the Union County Workforce Investment Board in mirroring New Jersey's Unified Workforce Investment Plan is to synchronize investment efforts in the development of a strong, talented and globally competitive labor force. The desired outcome of these strategic investments is to help Union County residents find employment within the seven key growth sectors in New Jersey.

✓The seven key growth sectors within the State of New Jersey include (i) health care, (ii) life sciences, (iii) financial services, (iv) advanced manufacturing, (v) transportation, logistics & distribution, (vi) technology & entrepreneurship, (vii) and retail, hospitality & tourism.

Program Services



2012-13 Annual Report

Workforce Investment Act Programs

- Youth Programs
- Occupational Training
- On-the-Job Training

WorkFirst New Jersey Programs

- Community Work Experience
- Community Work Experience & Education
- Job Search & Job Readiness

Workforce Investment Act Title II - Adult Literacy

- Adult Basic Education
- English as a Second Language
- Civics

National Emergency Grant – Hurricane Sandy

- Municipal Cleanup & Hurricane Relief Resource Management



Funded Programs



2012-13 Annual Report

PY 2012 WIA Youth Program Awards

Borough of Roselle	\$144,000.00
Brand New Day	\$51,000.00
City of Elizabeth	\$60,000.00
Clark Board of Education	\$25,500.00
Plainfield Board of Education	\$30,000.00
Urban League of Union County	\$72,000.00
Venture & Venture	\$96,000.00
Workforce Advantage	\$151,000.00
	<hr/>
	\$629,500.00

PY 2012 WorkFirst New Jersey Program Awards

B&M Consultants, Inc.	\$170,500.00
Union County College	\$318,200.00
Urban League of Union County, Inc.	\$124,600.00
Venture & Venture, Inc.	\$27,000.00
Workforce Advantage	\$442,350.00
YWCA of Central New Jersey	\$169,900.00
	<hr/>
	\$1,252,550.00



WIA Common Measures

Union County's Performance Exceeds the State Average



2012-13 Annual Report

✓Please refer to **Chart 1**

✓The Workforce Investment Act was designed to provide employment and training services to youth, adults and dislocated workers

✓The Common Measures **are the performance indicators evaluated by the US Department of Labor** under the Workforce Investment Act

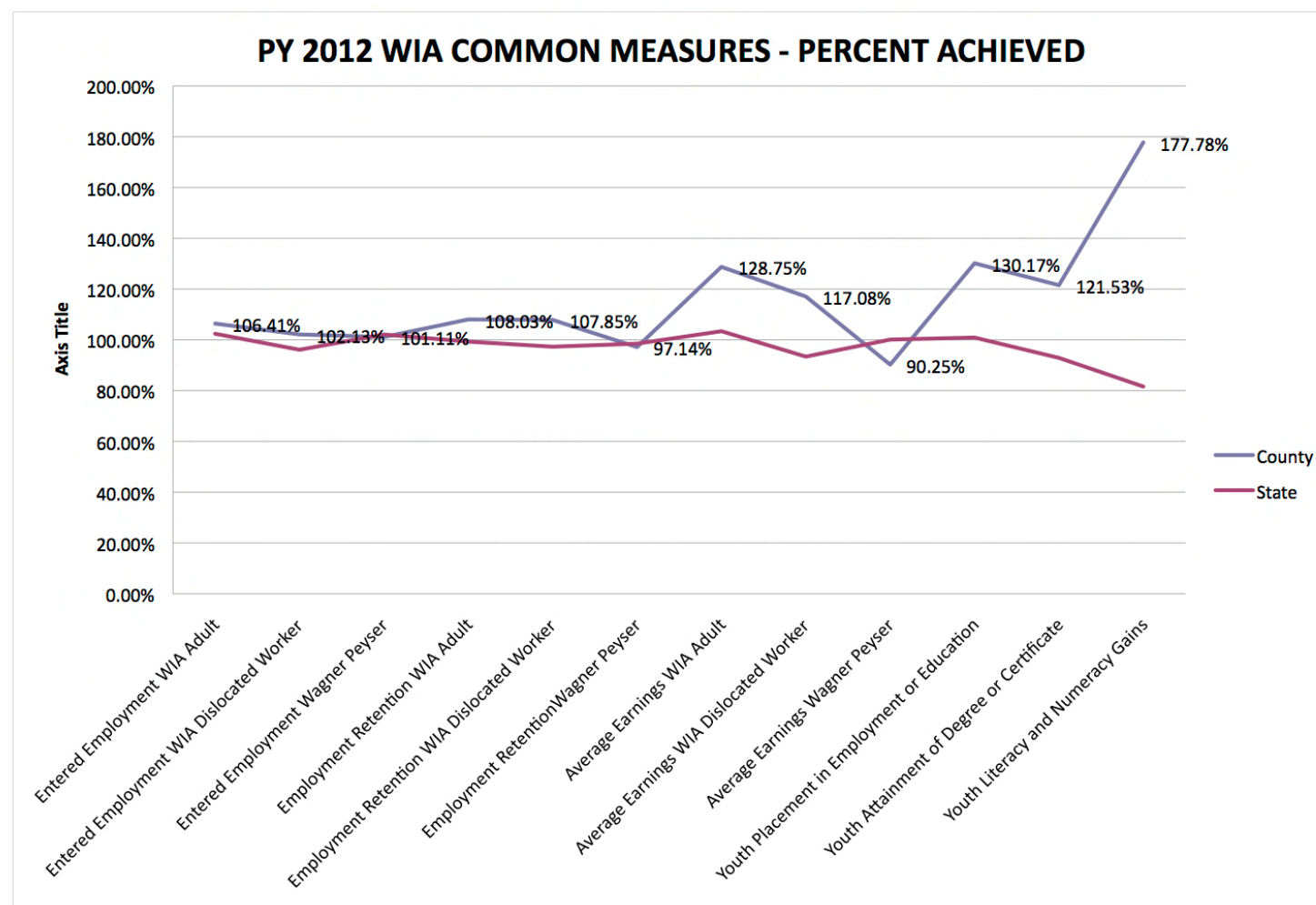
✓The Common Measures evaluate the effectiveness of the One Stop Career Center as it relates to job placement, job retention, job preparation, occupational training and educational services

✓The Common Measures evaluate workforce development programs for youth aged 14-21, adults and dislocated workers

✓The Union County One Stop Career Center exceeds the state average in performance

WIA Common Measures

Union County's Performance Exceeds the State Average



2012-13 Annual Report

Chart 1



WFNJ Participation Rate

Union County's Performance Exceeds the State Average



2012-13 Annual Report

✓ Please refer to **Chart 2**

✓ The WorkFirst New Jersey (WFNJ) programs are designed to provide New Jersey residents living in poverty with opportunities to bridge their skills gaps, engage in occupational training opportunities and secure unsubsidized employment

✓ WorkFirst New Jersey emphasizes personal responsibility and offers clients the opportunity to become self-sufficient members of the community

✓ Program 1 - Temporary Assistance to Needy Families (TANF) provides cash assistance to families with children under 18 years of age whether headed by a single adult or couple

✓ Program 2 - General Assistance (GA) provides cash assistance to single adults and couples age 18 and older, without children

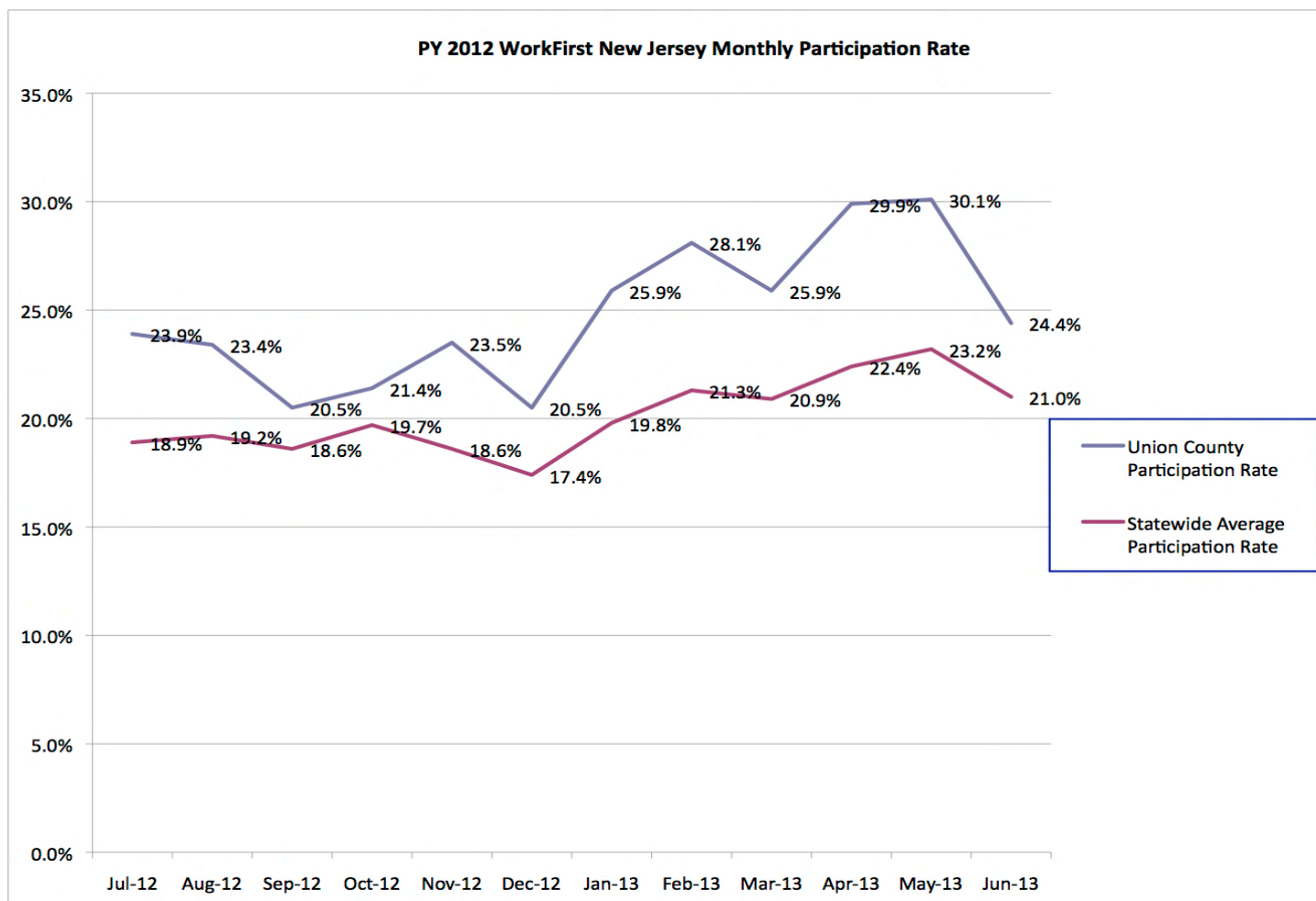
✓ The Union County One Stop Career Center exceeds the state average in performance

WFNJ Participation Rate

Union County's Performance Exceeds the State Average



2012-13 Annual Report



Union County – Key Growth Sectors

✓Please refer to **Charts 3 & 4**

✓The Key Growth Sectors indentified by the New Jersey State Employment & Training Commission have been prioritized in Union County in synchrony with available local data.

✓Construction – Retail, Hospitality & Tourism – Health Care – Transportation, Logistics & Distribution are the PRIMARY LOCAL GROWTH SECTORS as available data demonstrates significant job growth.

✓The Financial Services sector, while a key growth sector statewide, shows minimal job enhancement opportunity within Union County. Hence, it has been classified as a SECONDARY GROWTH SECTOR.

✓Advanced Manufacturing – Technology & Entrepreneurship – Life Sciences are classified as TERTIARY GROWTH SECTORS as they show no significant growth within the boundaries of Union County.

✓Allocating training funds in support of key growth sectors is the mandate of the Union County Workforce Investment Board of Directors.

✓It is imperative to note that 2/3 of Union County residents work outside of the boundaries of Union County, according to the 2010 Census data.





UCWIB Workforce Investment Plan 2014-2017

NJ Key Industry Growth Sectors

Local Industry Growth

Primary:
Construction

Health Care

Retail
Hospitality &
Tourism

**Transportation
Logistics &
Distribution**

Secondary:
Financial
Services

Tertiary:
Advanced Manufacturing
Technology & Entrepreneurship
Life Sciences

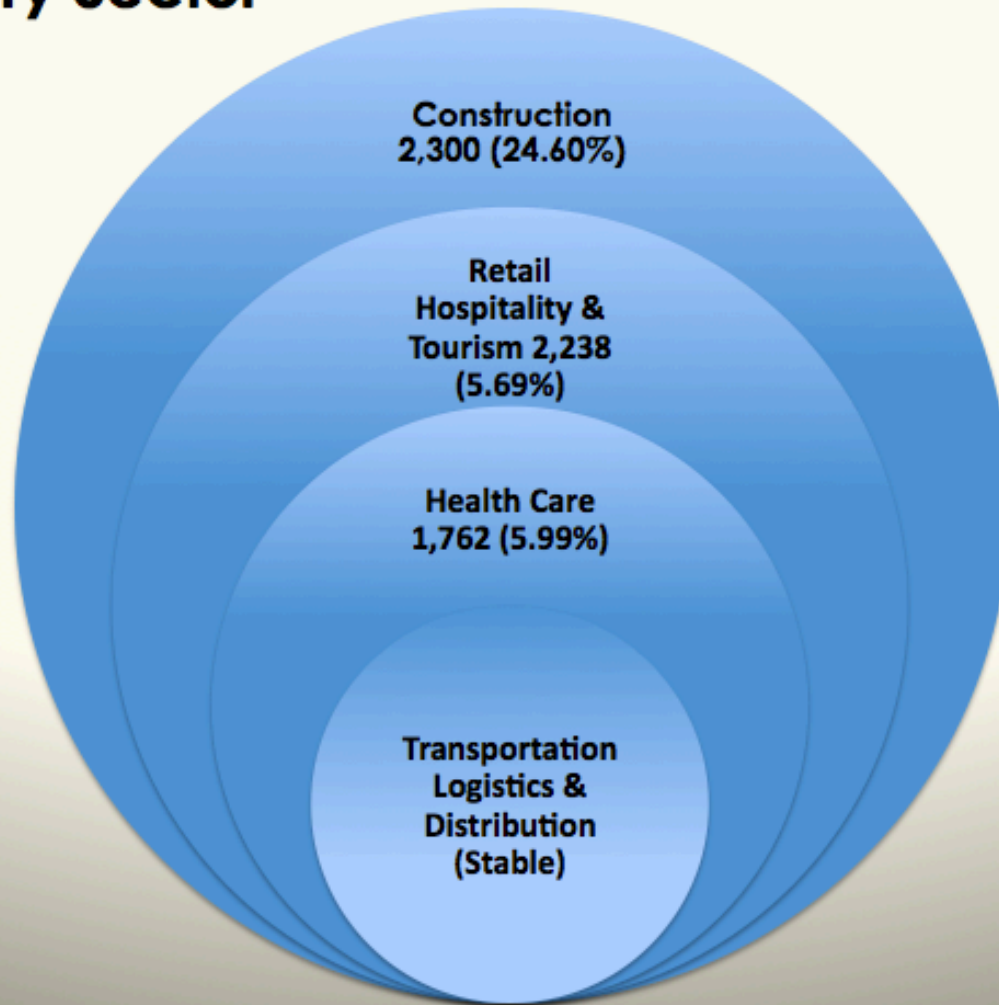
NJ Economic Opportunity Act of 2013

Source: NJ Department of Labor and Workforce Development Labor Market and Demographic Research - Occupational and Demographic Research





Union County Projected Job Growth (2010-2020) By Industry Sector



Source: NJ Department of Labor and Workforce Development Labor Market and Demographic Research - Occupational and Demographic Research

Chart 4



EXECUTIVE SUMMARY OF WIB MASTER BUDGET PROGRAM YEAR 2012



2012-13 Annual Report

Workforce Investment Act	Administration	Program	Allocation
WIA/Federal Funds:			
Adult	111,031.00	999,280.00	1,110,311.00
Youth	104,127.00	937,147.00	1,041,274.00
Dislocated Worker	<u>139,217.00</u>	<u>1,252,957.00</u>	<u>1,392,174.00</u>
	354,375.00	3,189,384.00	3,543,759.00
National Emergency Grant			
Hurricane Sandy NEG	<u>72,342.00</u>	<u>904,278.00</u>	<u>976,620.00</u>
	72,342.00	904,278.00	976,620.00
WorkFirst New Jersey			
TANF - Temporary Assistance to Need Families	192,890.00	1,414,524.00	1,607,414.00
TANF Work Verification	-	46,700.00	46,700.00
CAVP - Career Advancement Voucher Program	5,660.00	41,507.00	47,167.00
GA - General Assistance	35,665.00	261,542.00	297,207.00
SNAP - Supplemental Nutrition Assistance Program	35,665.00	261,542.00	297,207.00
GA/SNAP	<u>35,665.00</u>	<u>261,542.00</u>	<u>297,207.00</u>
	305,545.00	2,287,357.00	2,592,902.00
Other State Funds:			
Workforce Development Partnership Program	2,465.00	24,647.00	27,112.00
Workforce Learning Link	<u>15,820.00</u>	<u>210,180.00</u>	<u>226,000.00</u>
	18,285.00	234,827.00	253,112.00
TOTAL PY 2012 BUDGET	750,547.00	6,615,846.00	7,366,393.00





THE UNION COUNTY BOARD OF CHOSEN FREEHOLDERS



CHRISTOPHER HUDAK
Chairman



MOHAMED S. JALLOH
Vice Chairman



BRUCE H. BERGEN



LINDA CARTER



ANGEL G. ESTRADA



SERGIO GRANADOS



BETTE JANE KOWALSKI



ALEXANDER MIRABELLA



VERNELL WRIGHT

ALFRED J. FAELLA
COUNTY MANAGER

WILLIAM REYES, JR.
DEPUTY COUNTY MANAGER

JAMES E. PELLETTIERE
CLERK OF THE BOARD



Union County
We're Connected to You!

ON THE WEB AT
www.ucnj.org  

TOLL-FREE COUNTY INFORMATION
(877) 424-1234

