



[ucnj.org/prosecutor](http://ucnj.org/prosecutor)



[twitter.com/UCPONJ](https://twitter.com/UCPONJ)

## Union County Prosecutor's Office 2020 Annual Report

# Table of Contents

About the Prosecutor's Office.....	3
A Message from acting Prosecutor Ruotolo.....	4
Mission Statement.....	5
Organizational Chart.....	6
A Unique Challenge.....	7
Going Virtual.....	8
Reaching Out.....	9
Core Principles: Two Years Later.....	10
2020 Overview.....	15
Appellate, Domestic Violence, & Drug Court units.....	16
Elizabeth Project, Forensics Laboratory & Homicide Task Force.....	17
Intelligence Unit, Internal Affairs/Professional Standards & Juvenile Unit.....	18
Major Crimes Division.....	19
Megan's Law Unit, Plainfield Project & John H. Stamler Police Academy.....	20
Seized Asset Forfeiture Unit, Special Offenders Unit & Special Prosecutions Unit.....	21
Special Victims Unit, Trial Unit & Office of Victim-Witness Advocacy.....	22
Statistical Summaries.....	23
The UCPO Family.....	52
Executive Leadership.....	53

# About the Prosecutor's Office

The Union County Prosecutor is the chief law enforcement officer for Union County and maintains the Office of the County Prosecutor, located in the Andrew K. Ruotolo, Jr. Justice Center, at 32 Rahway Avenue in Elizabeth, New Jersey, as well as the Elizabeth-based Family Justice Center and Child Advocacy Center of Union County, the John H. Stamler Police Academy in Scotch Plains, the Forensics Laboratory in Westfield, and the Major Crimes Division (formerly known as the Narcotics Strike Force) at a confidential location.

The County Prosecutor is a constitutional officer who is responsible for the investigation and prosecution of all indictable offenses occurring within the county. The Prosecutor is also responsible for ensuring that policies and procedures mandated by the Office of the Attorney General of the State of New Jersey are disseminated and enforced among all law enforcement agencies within the county. The County Prosecutor renders guidance to local police departments in the investigation, identification, apprehension, and prosecution of defendants accused of committing crimes. In addition, the County Prosecutor performs an important public function in educating citizens about crime trends, disposition of criminal cases, preventive action to detect and prevent crimes, and policies and procedures to keep families and vulnerable members of our community safe.

Union County is a diverse jurisdiction of more than half a million residents living in approximately 100 square miles. There are 21 municipalities in Union County, ranging in size from Winfield (population approximately 1,500) to the county seat, Elizabeth, which, at approximately 128,000 residents, is New Jersey's fourth-most populous city. All 21 municipalities in the county maintain an independent police department. In addition to the 21 municipal departments, Union County is also home to the Union County Police Department, the Kean University Police Department, and the Union County Sheriff's Office, under the leadership of Sheriff Peter Corvelli.

The Union County Prosecutor's Office (UCPO) is staffed by approximately 250 people. In addition to the Prosecutor, the staff currently consists of assistant prosecutors, sworn law enforcement officers who function as investigators, prosecutor's agents, victim/witness counselors, biologists, chemists and lab assistants, training instructors, and clerical employees. UCPO is organized into various specialized units. What follows are an overview of the Office's operations in 2020, as well as statistical summaries for each unit.

# A Message from Acting Prosecutor Ruotolo

The 2020 calendar year was a challenging time for every member of our community. From a global public health crisis that impacted the lives of so many of our loved ones, to the national conversation on policing that will shape the trajectory of law enforcement policy moving forward, 2020 called upon us to rethink the ways in which we support, serve, and engage the Union County community.

The global COVID-19 pandemic, which as of this writing has killed nearly 600,000 people and sickened nearly 34 million in the U.S. – including more than 25,000 deaths and more than 1 million cases here in New Jersey – drastically changed virtually everything about contemporary American life. In an instant, beginning in March, as uncertainty gripped the nation, lockdowns went into effect, travel came to a standstill, businesses entered hibernation, and students at every level went from sitting in a classroom to sitting in front of a computer screen at home.

By late in the year, experts estimated the total cost of the pandemic to be more than \$16 trillion, or approximately 90 percent of the annual gross domestic product of the U.S. But there is no known estimate or metric that can suitably summarize the titanic social, medical, mental, professional, and societal effects on those who bore the direct and indirect impacts.

It was also a time that redefined the term “essential employee” in the context of public service. Despite the tumult presented by the pandemic, we in law enforcement had no choice but to press forward and continue to manage the administration of justice. As the chief law enforcement officer in Union County, I am proud beyond description of the herculean efforts made to do just that, with challenge after challenge being met and overcome with inexhaustible ingenuity and perseverance.

As the pandemic raged on, this year also called upon members of the public to reevaluate their trust in law enforcement. Following the murder of George Floyd in May, demonstrations across the country, including about 40 in Union County, challenged law enforcement to do better; to increase transparency, improve use of force policies, root out implicit bias, and better support the communities they serve. Programs launched by our Office both before and after the events of May strive to improve the manner by which we serve, and seek justice for, the people of Union County.

What follows in these pages are brief descriptions of those efforts. While statutorily required to be submitted each year, this document annually presents all of us with a unique opportunity to speak directly to the people we serve and explain the myriad ways in which we strive to allow them, in the words of our mission statement, to “live their lives without fear that those lives will be diminished by the acts of those would betray the laws of a civilized society.”

Thank you for reading,



Lyndsay V. Ruotolo, Acting Union County Prosecutor

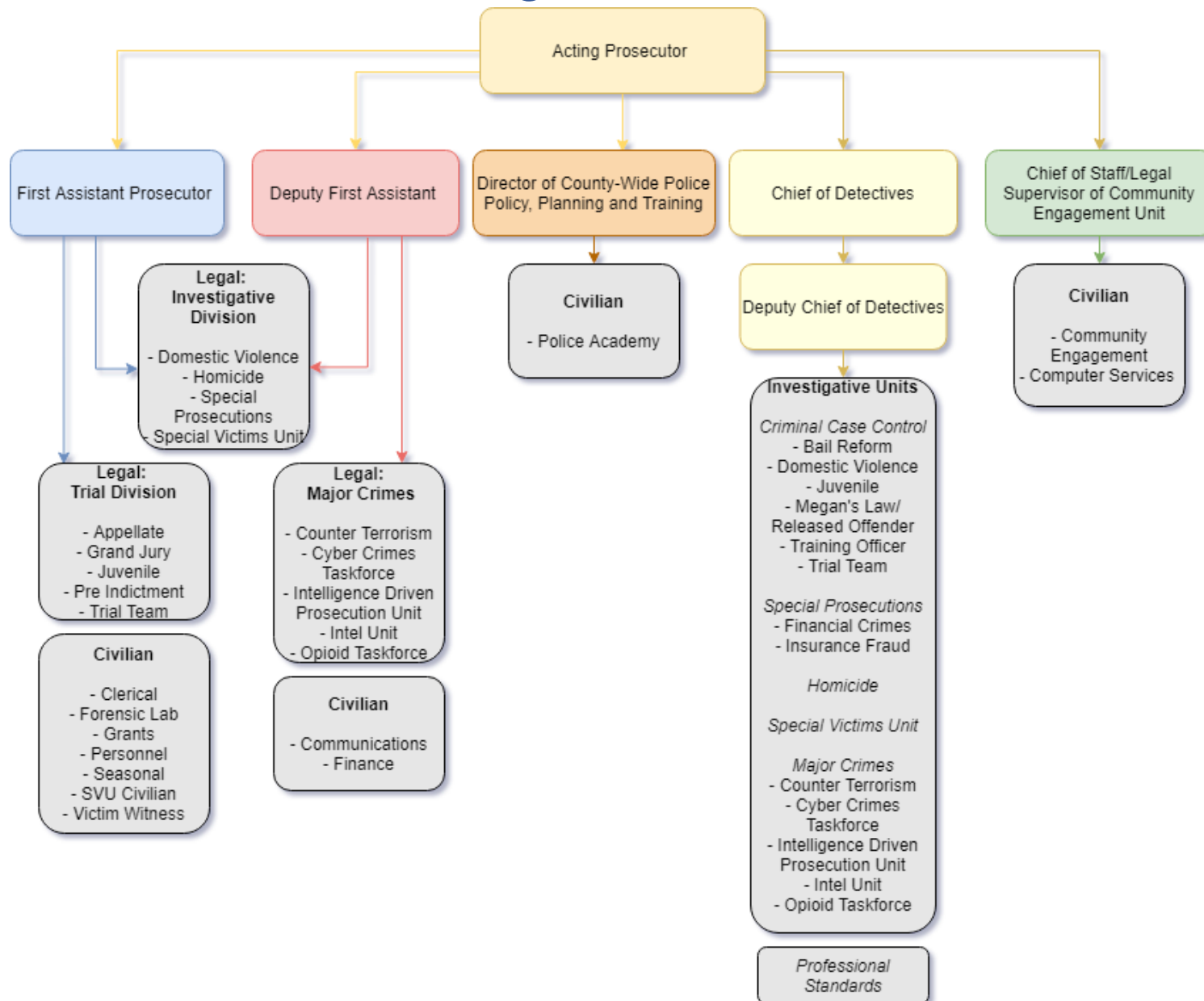


## Mission Statement

To the people of Union County: you have the right to live your lives without becoming a victim of violence; to have your liberty, as well as the liberty of your neighbors, safeguarded; to own possessions knowing they will not be taken from you; and to rest your head at night with the knowledge that should another transgress and cause harm to you, your family, or your property, such persons will be swiftly apprehended and brought to justice. Ensuring these rights is the most fundamental duty entrusted to government by those it governs and serves.

It is the mission of the Union County Prosecutor's Office to allow the people of this County to live their lives without fear that those lives will be diminished by the acts of those who would betray the laws of a civilized society.

# 2020 Organizational Chart



# A Unique Challenge

Working in tandem with the County of Union's COVID-19 response team, UCPO leadership quickly recognized that the pandemic necessitated sweeping changes to many standard operating procedures at the Prosecutor's Office, with access to facilities restricted, shifts restructured, court operations moved to a virtual format, and numerous protective measures put into place – including temperature checks, social distancing, contact tracing, a mask mandate, sanitation enhancements, and more.

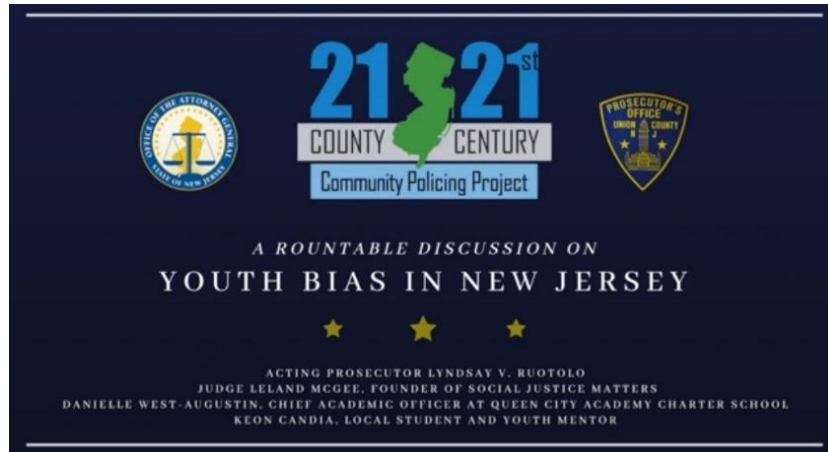
To keep members of the investigative staff safe, as their interactions with the public continued throughout the pandemic, quantities of PPE, dispensers of sanitizer, and vehicle modifications were secured, allowing investigations to proceed. To support the County of Union's COVID-19 services, members of the investigative staff provided security at the testing, vaccination, and food distribution sites at Kean University, an effort that remains ongoing and to date over 100,000 doses have been administered and over 150,000 specimens tested.

As the court system adapted to a virtual format, grand juries were paused for several months, temporarily halting the Office's ability to indict. While these court proceedings were paused, members of the legal staff began responding to the great number of petitions received for pandemic-related emergency release, included in the Governor's Executive Order 124, and the countless motions received from defendants seeking sentence modifications. As the pandemic remained ongoing, court proceedings returned to their weekly calendars in a virtual format.



*Where possible, such as with the graduation of the 122nd class of the John H. Stamler Police Academy in Scotch Plains (above), large-scale events were moved outdoors.*

# Going Virtual



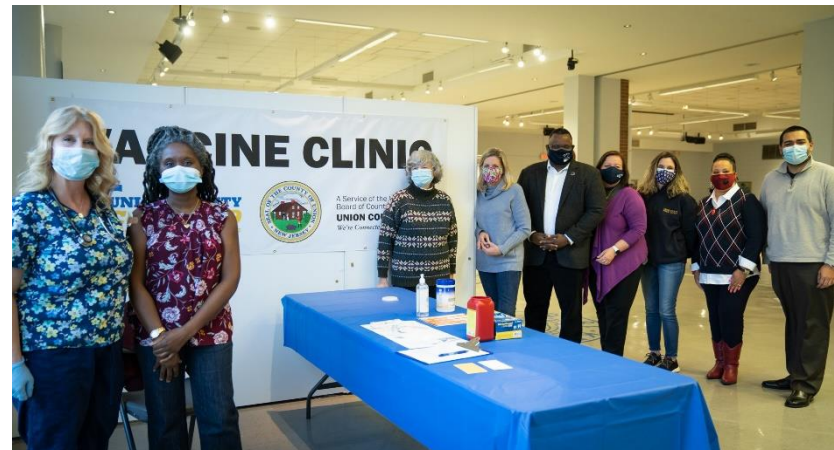
When the State of New Jersey put restrictions on in-person gatherings in place, the Prosecutor's Office ramped up its virtual programming in order to remain in touch with the community, broadcasting messaging ranging from a youth roundtable on bias, to public service announcements on auto theft prevention, to community conversations on police use-of-force, and other topics of great public importance.



# Reaching Out



Whenever possible, UCPO made its presence felt throughout the community in person as well – members of the Prosecutor’s Office volunteered at county-sponsored food distribution drives, worked security at the COVID vaccine clinic located on the Kean University campus, and saluted the service of late veterans on Memorial Day.



# Core Principles: Two Years Later

When Acting Prosecutor Ruotolo was sworn into service at the Prosecutors' Office in July 2019, she established several goals for the Office to accomplish during her tenure. Each of the five principles were rooted in her desire to better engage the community, improve police policy, and best serve the people of Union County. Two years later, the Prosecutor's Office continues to address the following objectives:

1. Strengthen the Public's Trust in Law Enforcement
2. Reduce Violence in Our Community
3. Empathetically and Effectively Address the Opioid Epidemic
4. Improve the Training and Safety of Our Officers
5. Protect Union County's Children



**PROGRESS UPDATE:**

## Goals 1 & 4: Strengthen Public Trust, Improve Officer Training/Safety

In July 2020, UCPO introduced a first-of-its-kind Union County Body-Worn Camera Performance Review Pilot Program. This program innovatively addresses two of the Office's goals—strengthening the public's trust in law enforcement by increasing transparency and implementing an additional opportunity for officer conduct review, and improving officer training and safety by keenly identifying law enforcement techniques in need of modification.

Through the program, for 90 days, three participating municipal departments—Cranford, Roselle, and Plainfield—agreed to randomly review officer body-worn camera footage from specific incident types including scenarios involving individuals with mental health conditions, motor vehicle stops, driving while intoxicated incidents, and scenarios in which officers unholstered their service weapons. Each collected video was catalogued in a database, with the reviewed footage aiding supervisors in commending exemplary officer conduct, and identifying needed departmental training improvements. The pilot program also created a mechanism for departments to regularly review body-worn camera footage, a policy that can continue long after the pilot's end.

At the time of launch, acting Prosecutor Ruotolo said, “I recognize that our office and law enforcement leaders across this county have an obligation to keep our community safe by providing our residents with the best-trained police force possible. We also have an obligation to keep our officers safe as they carry out their duties. Performance monitoring and early intervention are critical in achieving these standards. Better trained, better performing, and better supervised law enforcement officers, are more self-aware, safer and provide more effective and impactful service to the public.”

*From left, Plainfield Police Director Lisa Burgess, acting Union County Prosecutor Lyndsay V. Ruotolo, Cranford Police Chief Ryan J. Greco, UCPO Director of County-Wide Policy, Planning, & Training Jonathan Parham, and Roselle Police Chief Brian K. Barnes*



## Goal 2: Reduce Violence in Our Community



*Above: Prosecutor Ruotolo and Union County Sheriff Peter Corvelli participate in a panel discussion on security at the Jewish Education Center in Elizabeth. Below: Prosecutor Ruotolo and members of UCPO's Major Crimes Division attend a press conference announcing the arrest of members of the Pagan's Motorcycle Club.*



Since reorganizing the Office's investigative units to create the Major Crimes Division, several large-scale investigations have resulted in the arrest of dangerous defendants and improved collaboration amongst the county's law enforcement agencies. This joint effort to investigate the County's most dangerous offenders offers a more robust and effective response to violence within the community, and better serves the people of Union County.

The newly created Intelligence-Drive Prosecution Unit (IDPU) has thus far benefited from the increased collaboration between agencies in Union County, facilitating large-scale investigations and the arrest of several individuals involved in armed robberies. This information sharing is thanks to the established Intel Liaisons at each department in Union County who share and proactively respond to gathered information together as a cohesive unit.

The unit's Cyber Crimes Taskforce has utilized shared information and forensic analysis to identify, investigate, and charge individuals in possession of child sexual abuse materials. These heroic efforts protect the youngest members of our community from individuals intending to cause harm.

The unit's Opioid Task Force has successfully disrupted large-scale narcotics distribution schemes within the county, removing harmful substances from the street and working tirelessly to combat the opioid epidemic.

As a testament to the impact collaboration between law enforcement agencies can have on the safety and security of our community, UCPO's Major Crimes Division was integral in the successful year-long, multi-agency effort to arrest and charge 11 members of the Pagan's Motorcycle Club for their roles in violent crimes, narcotics distribution, and firearms offenses across the state of New Jersey.

**PROGRESS UPDATE:**

## Goal 3: Tackle the Opioid Epidemic

To continue the Office's efforts to eradicate the opioid epidemic, in January of 2020, Union County became the first in the state to expand Operation Helping Hand—a program conceived by Attorney General Gurbir Grewal when he served as Bergen County Prosecutor—to a twenty-four, seven, 365 model.

Through Operation Helping Hand 24/7/365, anytime anyone in Union County is arrested for a low-level opioid offense, they are offered access to free treatment and recovery services by their arresting officer. This happens twenty-four hours a day, seven days a week, 365 days a year. The program also offers a 24/7/365 hotline staffed by peer recovery counselors from Prevention Links, available to any Union County resident interested in beginning their recovery journey.

This program is possible thanks to the support of the Governor's Office, the New Jersey Department of Law and Public Safety, the Union County Board of Commissioners, and the Union County Police Chiefs Association.

In March, when COVID-19 began impacting face-to-face interactions, OHH24/7/365 modified outreach efforts, transitioning the method to phone calls, with UCPO investigators contacting residents directly and offering access to recovery services.

During 2020, twenty-one individuals were offered recovery services through face-to-face outreach efforts. When the pandemic shifted Helping Hand efforts to phone outreach, 332 individuals were contacted.



*Above: New Jersey Attorney General Gurbir Grewal and Prosecutor Ruotolo launch OHH 24/7/365.*

*Below: Prosecutor Ruotolo, representatives from Prevention Links, Elizabeth PD Director Graves and Deputy Chief Colon attend an OHH pop-up event.*



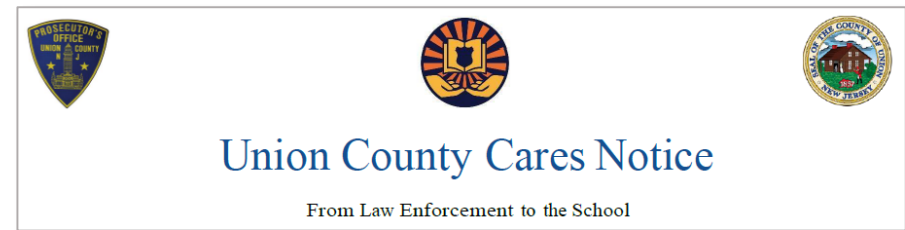
**PROGRESS UPDATE:**

## Goal 5: Protect Union County's Children

Launched across Union County by the Prosecutor's Office in March 2020, and supported by OAG directive 2020-09 in October 2020, the Union County CARES program endeavors to mitigate the lasting impact of trauma on a child, by connecting law enforcement with educators, giving school personnel a better understanding of the external experiences of their students.

Through the CARES program, when an officer in Union County responds to a call for service, and encounters a child at that location who has experienced a traumatic event (for example: a loved one's overdose, abuse, domestic violence) the officer fills out a CARES notice. This notice is then forwarded to the municipality's designated school-based CARES contact and the Prosecutor's Office. The notice contains no confidential about the incident, but instead lets educators know that their student has experienced hardship at home and should be *handled with care*.

Supporting the well-being of Union County's youth is an investment in the community's collective future and strengthening bonds between law enforcement and school personnel is a critical step in this core mission.



*Above: Prosecutor Ruotolo participates in Read Across America with students at the Queen City Academy Charter School in Plainfield.*

# 2020 Overview



*The Union County Emergency Response Team (UCERT), which regularly features members of several of the Prosecutor's Office's investigative units, welcomed a new leader in February 2020, when Union County Police Department Capt. Martin Mogensen transferred.*

Despite the challenges posed by the pandemic, the Prosecutor's Office's investigative units nonetheless continued to serve the interests of justice with diligence.

The Special Victims Unit filed criminal charges against the co-founder of a local robotics laboratory for allegedly committing sexual crimes against three students who attended classes there; in a separate case, the Unit also charged a priest who previously served as the chaplain of a prestigious preparatory school with engaging in a pattern of behavior that threatened the welfare of six students.

The Special Prosecutions Unit brought a pair of elder abuse cases against a total of four defendants, charging them with stealing a combined total of \$450,000 from two victims for whom they were supposed to be caring. The Special Prosecutions Unit's Animal Cruelty Task Force dismantled an illegal puppy mill in the county, rescuing over 132 animals from dangerous conditions.

The Homicide Task Force filed criminal charges against a total of 28 defendants, marking a 2020 clearance rate of over 60 percent.

The Major Crime's Division participated in a multi-agency investigation that resulted in the arrest of 11 members of the Pagan's Motorcycle Club.

# Unit Summaries

## **APPELLATE UNIT**

Assistant prosecutors in the Appellate Unit represent the State of New Jersey in various proceedings in the Superior Court Law Division and Appellate Division, the New Jersey Supreme Court, and Federal Court. These proceedings include appeals of municipal court convictions, such as those for DWI, as well as post-conviction relief proceedings, pretrial detention appeals, direct appeals, and habeas petitions. Unit members also conduct legal research and handle emergent motions for leave to appeal and interlocutory appeals.

## **DOMESTIC VIOLENCE UNIT**

The Domestic Violence Unit investigates and prosecutes domestic violence incidents that threaten the safety and livelihood of Union County residents, children, and first responders by utilizing evidence-based and offender-focused prosecution methods. The Unit is comprised of several assistant prosecutors, including a supervisor and deputy supervisor, plus investigators, victim/witness advocates, and a clerical. The core function of the Unit is to oversee the prosecution of all domestic violence cases in the county and participate in vital community programming. The Unit also reviews all domestic violence complaints filed in municipal police departments and assigns all docketed domestic violence complaints; prosecutes complicated or serious complaints; and reviews cases for transfer to other counties.

## **DRUG COURT**

The Drug Court Program, which began in Union County in 1999, offers nonviolent offenders who have been found to be prone to drug abuse and/or addiction a treatment-based alternative to prison. A variable number of individuals are enrolled in the Program at any given time, and they are required to report to court on a weekly, bi-monthly, or monthly basis, depending on the length of time the participant had spent in the Program and their successful compliance with the rules. Participants are also required to submit to random drug testing and unannounced home visits, report to probation on a weekly basis, obtain employment or education, and participate in either inpatient or outpatient treatment, as **clinically** determined. The Program is currently staffed by a dedicated full-time assistant prosecutor who handles applications, protocols, and oversight.

### **ELIZABETH PROJECT**

Since 1994, the Union County Prosecutor's Office has assigned an assistant prosecutor to work full-time at the Elizabeth Police Department. Referred to as the "Elizabeth Project," the program aims to enhance the relationship between the Elizabeth Police Department and the Prosecutor's Office by providing legal advice and investigative support. The assigned assistant prosecutor also assists with investigations and complaint drafting and approval from numerous law enforcement agencies, including the New Jersey State Police, the Port Authority Police Department, and the New Jersey Transit Police.

### **FORENSICS LABORATORY**

The Union County Prosecutor's Office Forensic Laboratory, located in the Ralph G. Froehlich Public Safety Building in Westfield, is committed to providing high-quality and timely delivery of forensic science services in support of law enforcement investigations; analyzing evidence impartially and thoroughly; reporting examination results accurately, and basing them on sound scientific practices; and improving the overall quality of testing and effectiveness of the management system. The Forensic Laboratory is comprised of scientific staff members and clerical staff, and it is separated into three units: the Controlled Dangerous Substances (CDS) Section, the Forensic Biology Section, and the Clerical Unit.

### **HOMICIDE TASK FORCE**

The Union County Homicide Task Force is responsible for the efficient and complete investigation of all homicide cases occurring within Union County. The Unit is also responsible for the investigation of all suspicious deaths, child deaths, and murder-suicides. The Task Force works collaboratively with members of the Union County Sheriff's Office Crime Scene Unit, Union County Police Department Ballistics Unit, and municipal police departments, and maintains a 24-hour-a-day legal and investigative on-call service to all law enforcement agencies in Union County. The Task Force is comprised of assistant prosecutors, investigative supervisors, and detectives whose work is supported by clerical personnel.

## **INTELLIGENCE UNIT**

The Intelligence Unit works toward a dedicated mission to gather information, in a manner consistent with the law, from all sources, in order to provide tactical and strategic assessments on the existence, identities, and capabilities of criminal suspects and enterprises, and to further the crime prevention and law enforcement priorities identified by the Office. One key area of responsibility for the Intelligence Unit is collecting, analyzing, and disseminating gang member intelligence/information into the InfoShare intelligence database. The Intelligence Unit is also often tasked with mapping a variety of criminal activity throughout the county and state; identifying crimes that have similar methods of operation; and offering assistance to units within the county.

## **INTERNAL AFFAIRS/PROFESSIONAL STANDARDS**

The Professional Standards Unit is responsible for conducting investigations of police misconduct, encompassing criminal and administrative violations committed by law enforcement personnel. It is also charged with the responsibility of overseeing internal affairs criminal investigations for all police jurisdictions in Union County. Under certain conditions, UCPO may conduct investigations of police at the executive level of law enforcement, and may conduct independent or joint investigations of any criminal or administrative incident involving municipal or county law enforcement. The Unit also provides legal and investigative support to municipal and county law enforcement for internal affairs investigations.

## **JUVENILE UNIT**

The Juvenile Unit is responsible for prosecuting juveniles for acts of delinquency, which can range from violations of township ordinances to murder. The unit is comprised of a supervising assistant prosecutor, several additional assistant prosecutors, detectives, a victim/witness advocate, and clerical staff. The goals of the Unit are to promote swift and fair punishment for repeat and violent offenders, to divert minor offenders away from delinquency and further court action, and to bring proper rehabilitative services to all juvenile offenders.

## MAJOR CRIMES DIVISION

The Major Crimes Division, established in 2019 and operating at a confidential location, replaced the Narcotics Strike Force and today includes four distinct subdivisions: the Intelligence-Driven Prosecution Unit, Opioid Task Force, Cyber Crime Task Force, and the Counter-Terrorism Unit.

<p>The Intelligence-Driven Prosecution Unit (IDPU), comprised of members of the legal and investigative staff, as well as civilian intelligence analysts and a geographic information system mapping specialist, utilizes a combination of traditional and technologically advanced investigative techniques to identify, investigate, and prosecute individuals and organizations, such as gangs, drug trafficking enterprises, and hate groups, responsible for violence in Union County communities. The Unit also works closely with officers appointed to serve as Intelligence Liaisons from each department within Union County to share information and then proactively act on the information gathered as one united force. The Unit and its municipal partners benefit from the expertise of the other units that fall within the Major Crimes Division.</p>	<p>The Opioid Task Force was created to implement a response to the opioid epidemic that is empathetic and holistic in its approach to the public health crisis, while also remaining aggressive and strategic in its pursuit of those who profit from poisoning the people the Office is charged with protecting. The Task Force works closely with the IDPU, as there is often overlap in the intelligence gathered by one and the mission of the other, and it oversees and manages Operation Helping Hand 24/7/365, a first-of-its-kind addiction intervention program through which all suspects arrested for low-level possessory offenses involving heroin or other opioids countywide are offered face-to-face access to rehabilitative services at the time of their arrest.</p>
<p>The Counter-Terrorism Unit processes suspicious activity reports that may have a nexus to terrorism, coordinating the investigation of these leads with the New Jersey Office of Homeland Security and Preparedness and the FBI Joint Terrorism Task Force. The assigned County Counter-Terrorism Coordinator is responsible for entering terrorism and homeland security information related to suspicious activity reports into the New Jersey Suspicious Activity Reporting System (NJSARS). A Northern New Jersey Urban Area Security Initiative (UASI) Risk Mitigation Planner (RMP) is also assigned to the Task Force, and acts as a liaison to the U.S. Department of Homeland Security's 16 designated Critical Infrastructure Sectors within the County.</p>	<p>The Cyber Crime Task Force's responsibilities include serving as a support system for the Office's other units by installing and managing all covert surveillance equipment and the Office's wiretap system and related equipment; conducting forensic examinations of digital devices, such as cell phones, tablets, and computers; performing video recovery for active investigations by responding to crime scenes and surrounding areas to download footage from any available video surveillance systems; and assisting investigations into the possession and distribution of child exploitation material countywide.</p>

### **MEGAN’S LAW UNIT**

The Megan’s Law Unit is responsible for the notification, monitoring, and enforcement of registered sex offenders in Union County. The Unit has the responsibility of determining the risk of re-offense for each offender and assigning them a “tier” based upon that determination, as well as ensuring that all of them have properly registered their residence, employment, and/or school attendance; verifying that all registrants do, in fact, reside at their given addresses; and monitoring the offenders with local law enforcement and other agencies to ensure compliance with the quarterly and annual address verification, as mandated by the New Jersey Office of the Attorney General Guidelines for Law Enforcement for the Implementation of Sex Offender Registration and Community Notification Laws.

### **PLAINFIELD PROJECT**

The Plainfield Project is a fully staffed satellite office of the Union County Prosecutor’s Office established in the City of Plainfield. Its mission is to work closely with the Plainfield Police Dept. to advance the shared goal of reducing crime in the “Queen City,” as well as working with the community and the police department on crime-reduction initiatives. In addition to providing daily legal advice and investigative support to the Plainfield Police Division, the assistant prosecutor assigned to the Plainfield Project also provides legal assistance to the Westfield, Scotch Plains, and Fanwood Police Departments.

### **JOHN H. STAMLER POLICE ACADEMY**

Union County is home to one of New Jersey’s premier police training facilities: the John H. Stamler Police Academy in Scotch Plains, named for the late County Prosecutor. The Academy has two primary functions: to provide basic police training to recruits to produce qualified law enforcement officers for municipal, county, and state agencies; and to provide advanced (in-service) training for police officers. The Basic Training Police Curriculum meets the strict requirements of the New Jersey Police Training Commission. The instructional staff is comprised of experts in law enforcement, thus assuring that Academy graduates have the tools needed to serve the public and honor their oaths of office. A unique partnership between the Academy, the Union County Police Chiefs Association, and the Union County Prosecutor’s Office, forged in July 1986, continues to ensure the highest standards of training, competence, and professionalism, to assist our law enforcement officers to successfully and safely protect and serve our citizens.

### **SEIZED ASSET FORFEITURE UNIT**

The Seized Asset Forfeiture Unit files civil lawsuits seeking the forfeiture of property that has been, or is intended to be, utilized in the furtherance of illegal activity; has been, or is intended to become an integral part of illegal activity; or constitutes the proceeds of illegal activity. A forfeiture action is initiated by the filing of a verified complaint in the Law Division of Superior Court. Forfeiture actions promote public policy objectives by encouraging property owners to be more responsible with their property and deter them from using or allowing their property to be used for illegal activity. A corollary benefit is that the forfeited property is distributed to the law enforcement agency or agencies that participated in the investigation and seizure. The forfeited property is to be utilized by the seizing agency or agencies, solely in furtherance of law enforcement purposes.

### **SPECIAL OFFENDERS UNIT**

The Special Offenders Unit was created in 2005 to address a marked increase in criminal prosecutions against individuals with mental illness. Staffed by an assistant prosecutor and a supervisor, the Unit handles any Trial Unit case in which the defendant's competency to stand trial is questioned, and it assists in cases for which the defenses of insanity or diminished capacity are raised. The Unit also assists in crafting or supporting pre-trial release conditions for individuals who have a mental health diagnosis that would be appropriate for release if the right support is available.

### **SPECIAL PROSECUTIONS UNIT**

The Special Prosecutions Unit's core function is the investigation and prosecution of complex financial matters, internal affairs complaints, identity theft, and official misconduct by public officials. The Unit also takes on intricate investigations into matters such as officer-involved shootings, insurance fraud, bribery, public integrity crimes, election law violations, bias crimes, Open Public Meeting Act (OPMA) violations, and cybercrimes. The Unit includes the Bias Unit, Insurance Fraud Unit (IFU), and Animal Cruelty Unit under the umbrella of its operations. The Unit in sum is staffed by several assistant prosecutors, a lieutenant, three sergeants, detectives, and clerical support staff.

### **SPECIAL VICTIMS UNIT**

The Special Victims Unit (SVU) is headquartered at the Child Advocacy Center of Union County in Elizabeth, and it investigates and prosecutes sexually based offenses, child physical abuse and neglect, child endangerment, clergy abuse, human trafficking, and missing and abducted children. The SVU staff includes a legal complement comprised of several assistant prosecutors, including a director and deputy director; an investigative complement comprised of a lieutenant, sergeants, and detectives; and a support complement comprised of a multi-disciplinary coordinator, a forensic nurse coordinator, a victim/witness advocate, and clericals. The staff handles an annual caseload routinely topping more than 500 referrals.

### **TRIAL UNIT**

The Trial Unit is comprised of a legal chief, trial supervisors, and assistant prosecutors who are assigned to six criminal courts that handle indictable criminal charges that are not being handled by a specialized unit. The Trial Unit is the backbone of any prosecutor's office, as reflected in the volume of cases, which the assigned assistant prosecutors must review, prepare, and adjudicate during the course of a year.

### **OFFICE OF VICTIM-WITNESS ADVOCACY**

The mission of the Union County Prosecutor's Office of Victim-Witness Advocacy is to support victims and witnesses of crimes in Union County through information, advocacy, and community outreach in order to help make their participation in the criminal justice system less difficult and burdensome. The goal of victim-witness advocates is to empower survivors of crime and the families of crime victims through supportive efforts to ensure that they are treated with dignity, compassion, and respect in the aftermath of a crime. The Office is currently comprised of the victim-witness coordinator, two assistant coordinators, a program administrative assistant, and several advocates.

# Statistical Summaries

Section IV. 8a  
2020

## APPELLATE WORKLOAD AND DISPOSITIONS Appellate Division and Other Appellate Courts

APPELLATE WORKLOAD AND DISPOSITION/OUTCOMES	Appellate Division Appeals						NJ Supreme Court Appeals	US and Other Court Appeals (specify Court)	TOTAL
	Criminal Referral Cases	Other Criminal Appeals	Criminal Interlocutory	Juvenile	Law Division (de novo)	Civil			
1. Appeals pending at beginning of the year	187		2	0	2		12	3	204
2. Notices of appeal received/filed	57		30	2	13		50	3	122
3. Appellate motions, motion responses filed	10		30	0	12		47	0	87
4. Appellate briefs filed	82		30	0	12		2	3	97
5. STATE Appeals and - TOTAL DISPOSED Cross Appeals	9		9	0	0		0	0	18
a. Conviction or order affirmed	2		2	0	0		0	0	4
b. Conviction or order reversed	7		7	0	0		0	0	14
c. Remanded or judgment modified	0		0	0	0		0	0	0
d. Withdrawn or dismissed	0		0	0	0		0	0	0
e. Affirmed in part/Reversed and/or remanded in part	0		0	0	0		0	0	0
6. DEFENSE Appeals - TOTAL DISPOSED	102		21	2	11		50	3	123
a. Conviction or order affirmed	70		13	2	9		45	3	83
b. Conviction or order reversed	7		1	0	0		2	0	10
c. Remanded or judgment modified	2		0	0	1		2	0	4
d. Withdrawn or dismissed	16		5	0	1		3	0	25
e. Affirmed in part/Reversed and/or remanded in part	4		0	0	0		0	0	4
7. Appeals pending at the end of the year	148		1	0	2		0	0	149

Rev. 2015

## APPELLATE WORKLOAD AND DISPOSITIONS

### Law Division

APPELLATE WORKLOAD AND DISPOSITIONS/OUTCOMES	MUNICIPAL COURT APPEALS -- BY TYPE OF VIOLATION					TOTAL
	Criminal	Disorderly Persons	Motor Vehicle	Municipal Ordinances	Other	
1. Appeals pending at beginning of year	0	0	2			2
2. Notices of appeal received/filed	0	0	13			13
3. Appellate motions, motion responses filed	0	0	12			12
4. Appellate briefs filed	0	0	12			12
5. TOTAL APPEALS DISPOSED	0	0	11			11
a. Conviction or order affirmed	0	0	9			9
b. Conviction or order reversed	0	0	0			0
c. Remanded or judgment modified	0	0	1			1
d. Withdrawn or dismissed	0	0	1			1
6. Appeals pending at the end of the year	0	0	2			2

Rev. 1995

**POST-CONVICTION ACTIVITIES  
AND MISCELLANEOUS COURT ACTIVITIES  
BY TYPE AND OUTCOME**

<b>POST CONVICTION ACTIVITY AND OUTCOME</b>	<b>NUMBER</b>
1. Krol hearings involving the prosecutor's office	XX
2. TOTAL post-conviction relief applications/briefs filed involving the prosecutor's office	30
a. Defendants granted relief	4
b. Defendants denied relief	20
c. Defendants granted relief in part/Denied relief in part	0
d. Defendants dismissed/Withdrawn	6
3. TOTAL habeas corpus petitions/briefs filed involving the prosecutor's office	3
a. Defendants granted relief	0
b. Defendants denied relief	3
c. Defendants granted relief in part/Denied relief in part	0
d. Defendants dismissed/Withdrawn	0

Rev. 2015

## BIAS: ADULT DEFENDANTS WITH BIAS CRIME RELATED CHARGES DISPOSED

	TOTAL	NUMBER CONVICTED		ACQUITTED	DISMISSED	DOWNGRADE/ REMAND
		PLEA	TRIAL			
Number of defendants disposed	0	0	0	0	0	0
Number of defendants for whom application for extended term of imprisonment made	0	0	0	0	0	0
Number of defendants for whom application was granted	0	0	0	0	0	0
Number of defendants for whom application was denied	0	0	0	0	0	0
Number of defendants for whom simple assault was upgraded to 4th degree crime	0	0	0	0	0	0
Number of defendants for whom harassment was upgraded to 4th degree crime	0	0	0	0	0	0
Number of defendants who had both an upgrade to a 4th degree crime and an application for extended terms	0	0	0	0	0	0

Rev. 1992

**BIAS: JUVENILE DEFENDANTS WITH BIAS CRIME RELATED CHARGES DISPOSED**

		NUMBER CONVICTED				
	TOTAL	PLEA	TRIAL	ACQUITTED	DISMISSED	DOWNGRADE/ REMAND
Number of juveniles disposed	0	0	0	0	0	0
Number of juveniles waived for adult prosecution	0	0	0	0	0	0
Number of juveniles for whom application for extended term of imprisonment made	0	0	0	0	0	0
Number of juveniles for whom application was granted	0	0	0	0	0	0
Number of juveniles for whom application was denied	0	0	0	0	0	0
Number of juveniles for whom simple assault was upgraded to 4th degree crime	0	0	0	0	0	0
Number of juveniles for whom harassment was upgraded to 4th degree crime	0	0	0	0	0	0
Number of juveniles who had both an upgrade to a 4th degree crime and an application for extended terms	0	0	0	0	0	0

Rev. 1992

## BUDGETS AND EXPENDITURES

ACTIVITY	YEAR	Total Operating Budget (excluding Grants)	Total Grants Funding
1. TOTAL actual expenditures, prior report year (include all County, State and Federal funding)	2019	\$24,228,083	\$1,913,789.42
a. Salaries and Wages		\$23,373,083	\$1,029,278.10
b. Other Expenses		\$855,000	\$884,511.32
2. TOTAL Budgeted Appropriations, current report year (include all County, State and Federal funding)	2020	24,710,840.00	2,400,304.00
a. Salaries and Wages		23,846,340.00	\$1,349,355.00
b. Other Expenses		864,500.00	1,050,949.00

Rev. 2007

### **Elizabeth Project (2020)**

<b>Indictable cases screened and/or approved</b>	<b>812</b>
<b>Indictable complaints remanded</b>	<b>213</b>
<b>Complaints approved (DP only)</b>	<b>63</b>
<b>Complaint approval denied</b>	<b>76</b>
<b>Search warrants/CDWs</b>	<b>19</b>
<b>Subpoenas</b>	<b>110</b>
<b>Trigger lock</b>	<b>12</b>
<b>DNA approval/court orders</b>	<b>48</b>

## HOMICIDE TASK FORCE: INVESTIGATIVE WORKLOAD AND DISPOSITIONS

INVESTIGATIVE WORKLOAD AND DISPOSITIONS	NUMBER OF INVESTIGATIONS BY TYPE -- Original and Post-complaint investigations						
	Original Investigations Conducted Jointly With:				Original Exclusive Investigations	TOTAL Original Investigations	TOTAL Post-complaint Investigations
	Local Police	State Agency	Other County Prosecutor	Other Agency			
2. Investigations pending or inactive at the beginning of the year	130					135	
3. Investigations opened during the year	78					78	
4. TOTAL Investigative workload for the year (add nos. 1 - 2)	213					213	
5. TOTAL Investigations completed during this year (add a. - d.)	56					56	
a. Resulting in criminal charges	22						
b. Referred to other agency for criminal prosecution							
c. Referred to other agency for civil or administrative action							
d. Closed - No further action	34					34	
6. Investigations pending or inactive at the end of the year	157					157	

Rev. 1995

## HOMICIDE TASK FORCE: DISPOSITIONS OF ORIGINAL INVESTIGATIONS RESULTING IN CRIMINAL CHARGES

DISPOSITION OF ORIGINAL INVESTIGATIONS RESULTING IN CRIMINAL CHARGES	NUMBER OF DEFENDANTS
1. Defendants charged by complaint, TOTAL	28
a. Defendants with complaints administratively dismissed	0
b. Defendants with complaints downgraded to disorderly persons offenses	0
c. Defendants with complaints referred to Family Court	0
d. Defendants with complaints presented to grand jury	3
2. Defendants with original charges presented to grand jury on direct presentment	0
3. Defendants charged through accusation	0
4. Defendants completing grand jury process on direct presentment and complaint presentation, TOTAL	3
a. Defendants indicted	3
b. Defendants no billed and remanded to municipal court	0
c. Defendants no billed/no action	0

Rev. 1995

Agency Name: Union County Prosecutor's Office  
 Year: 2020

## Annual Internal Affairs Summary

	Pending from Prior Years	New cases	Cases Closed	Source of Complaint			Criminal Outcome				Internal Disciplinary Outcome					Pending End of Year
				Agency	Civilian	Anon.	Conviction	Diversio	Dismissal		Not	Administratively				
							n	n	Acquittal		Exonerated	Sustained	Unfounded	Closed	Sustained	
Excessive Force	0	1	1	0	1	0	0	0	0	0	1	0	0	0	0	0
Improper Arrest	0	0	0	0	0	0	0	0	0	0	0	0	0	0	0	0
Improper Entry	0	0	0	0	0	0	0	0	0	0	0	0	0	0	0	0
Improper Search	0	0	0	0	0	0	0	0	0	0	0	0	0	0	0	0
Other Criminal Violation	0	10	1	0	1	0	0	0	0	0	0	0	1	0	0	9
Differential Treatment	0	0	0	0	0	0	0	0	0	0	0	0	0	0	0	0
Demeanor	0	8	5	1	3	1	0	0	0	0	0	1	1	1	2	3
Domestic Violence	0	2	0	0	0	0	0	0	0	0	0	0	0	0	0	2
Other Rule Violation	0	6	3	1	1	1	0	0	0	0	0	1	0	1	1	3
Total Cases Opened		<u>27</u>														
Total Cases Closed		<u>10</u>														
Total Pending Cases		<u>17</u>														
Total Cases >180 Days		<u>3</u>														

## ICAC: INVESTIGATIVE WORKLOAD AND DISPOSITIONS

INVESTIGATIVE WORKLOAD AND DISPOSITIONS	NUMBER OF INVESTIGATIONS BY TYPE -- Original and Post-complaint investigations						
	Original Investigations Conducted Jointly With:				Original Exclusive Investigations	TOTAL Original Investigations	TOTAL Post-complaint Investigations
	Local Police	State Agency	Other County Prosecutor	Other Agency			
7. Investigations pending or inactive at the beginning of the year					59	59	
8. Investigations opened during the year	1				153	154	
9. TOTAL Investigative workload for the year (add nos. 1 - 2)					212	213	
10. TOTAL Investigations completed during this year (add a. - d.)					28	28	
e. Resulting in criminal charges					1	1	
f. Referred to other agency for criminal prosecution	1	4	10		15	15	
g. Referred to other agency for civil or administrative action							
h. Closed - No further action					11	11	
11. Investigations pending or inactive at the end of the year					184	185	

Rev. 1995

## ICAC: DISPOSITIONS OF ORIGINAL INVESTIGATIONS RESULTING IN CRIMINAL CHARGES

DISPOSITION OF ORIGINAL INVESTIGATIONS RESULTING IN CRIMINAL CHARGES	NUMBER OF DEFENDANTS
1. Defendants charged by complaint, TOTAL	1
e. Defendants with complaints administratively dismissed	
f. Defendants with complaints downgraded to disorderly persons offenses	
g. Defendants with complaints referred to Family Court	
h. Defendants with complaints presented to grand jury	
2. Defendants with original charges presented to grand jury on direct presentment	1 Pending GJ
3. Defendants charged through accusation	
4. Defendants completing grand jury process on direct presentment and complaint presentation, TOTAL	
d. Defendants indicted	
e. Defendants no billed and remanded to municipal court	
f. Defendants no billed/no action	

Rev. 1995

# Juvenile Unit

Section IV. 9.c.  
2020

## JUVENILE WAIVER DECISIONS

1. Voluntary Waivers at Juvenile's Request	0
2. Juvenile Waiver Applications by Prosecutor	
a. Pending at Beginning of Year	7
b. Motions Filed by Prosecutor this Year	3
3. Juvenile Waiver Decisions (Prosecutor's Applications)	
a. Waived on Prosecutor's Motion with Juvenile's Consent	1
b. Waived on Prosecutor's Motion after a Hearing	1
c. Motion Voluntarily Withdrawn by Prosecutor	8
d. Waivers Denied	0
e. Total Decisions (sum of 3a through 3d)	10
4. Juvenile Waiver Applications filed by Prosecutor Pending at Year End (2.a. + 2.b. - 3.e.)	0

Rev. 1999

## MAJOR CRIMES DIVISION: INVESTIGATIVE WORKLOAD AND DISPOSITIONS

INVESTIGATIVE WORKLOAD AND DISPOSITIONS	NUMBER OF INVESTIGATIONS BY TYPE -- Original and Post-complaint investigations						
	Original Investigations Conducted Jointly With:				Original Exclusive Investigations	TOTAL Original Investigations	TOTAL Post-complaint Investigations
	Local Police	State Agency	Other County Prosecutor	Other Agency			
12. Investigations pending or inactive at the beginning of the year	1	0	0	1	3	5	0
13. Investigations opened during the year	0	0	0	15	31	46	0
14. TOTAL Investigative workload for the year (add nos. 1 - 2)	1	0	0	16	34	51	0
15. TOTAL Investigations completed during this year (add a. - d.)	1	0	0	15	29	45	0
i. Resulting in criminal charges	1	0	0	0	24	25	
j. Referred to other agency for criminal prosecution	0	0	0	15	1	16	
k. Referred to other agency for civil or administrative action	0	0	0	0	0	0	
l. Closed - No further action	0	0	0	1	4	5	
16. Investigations pending or inactive at the end of the year	0	0	0	0	5	6	0

Rev. 1995

## MAJOR CRIMES DIVISION: DISPOSITIONS OF ORIGINAL INVESTIGATIONS RESULTING IN CRIMINAL CHARGES

DISPOSITION OF ORIGINAL INVESTIGATIONS RESULTING IN CRIMINAL CHARGES	NUMBER OF DEFENDANTS
1. Defendants charged by complaint, TOTAL	72
i. Defendants with complaints administratively dismissed	6
j. Defendants with complaints downgraded to disorderly persons offenses	3
k. Defendants with complaints referred to Family Court	0
l. Defendants with complaints presented to grand jury	10
2. Defendants with original charges presented to grand jury on direct presentment	0
3. Defendants charged through accusation	6
4. Defendants completing grand jury process on direct presentment and complaint presentation, TOTAL	10
g. Defendants indicted	10
h. Defendants no billed and remanded to municipal court	0
i. Defendants no billed/no action	0

Rev. 1995

## PLAINFIELD PROJECT

Cases Screened - Indictment			19-Jan	19-Feb	19-Mar	19-Apr	19-May	19-Jun	19-Jul	19-Aug	19-Sep	19-Oct	19-Nov	19-Dec
234			32	27	19	8	9	15	14	15	21	30	24	20
Downgrades/Remands														
91			18	19	3	3	3	7	3	2	6	10	9	6
Complaint Approval														
65			8	8	3	2	4	7	3	8	3	4	6	3
DP Only	Denied	Reviewed for Mun. Ct.												
22	14	4	1 0 0	2 1 0	1 0 0	0 0 0	1 2 1	4 1 1	1 1 0	2 2 0	3 4 0	1 2 1	6 1 1	2 0 1
Subpoenas	Court Orders	SWs												
114	9	14	3 1 1	8 1 1	13 0 1	3 0 0	8 0 0	12 1 0	6 0 1	11 2 2	8 1 2	10 1 2	16 2 4	10 2 2
Trigger Lock Referrals														
5			1	0	0	0	0	0	0	1	1	0	1	1

**POLICE PURSUIT SUMMARY REPORT**

Agency	Union County Prosecutor's Office	County
Reporting Period	January 1, 2020 - December 31, 2020	Union
Person completing report	Chief Patricia G. Gusmano	
Phone number	(908) 527-4657	

1. Number of pursuits initiated	279
2. Number of pursuits resulting in accidents	43
3. Number of pursuits resulting in injuries (NO DEATHS)	18
4. Number of pursuits resulting in death	0
5. Number of pursuits resulting in arrest	65
6. Number of vehicles in accidents	
a. Pursued vehicles	36
b. Police vehicles	15
c. Third-party vehicles	28
7. Number of people injured	
a. Pursued vehicles	15
b. Police vehicles	3
c. Third-party vehicles	13
d. Pedestrians	1
8. Number of people killed	
a. Pursued vehicles	0
b. Police vehicles	0
c. Third-party vehicles	0
d. Pedestrians	0
9. Number of people arrested	90
10. Number of pursuits in which a tire deflation device was used	2

(DCJ 10/2001)

## PROSECUTORIAL SCREENING OF DEFENDANTS

SCREENING OUTCOMES	STAGE OF THE CRIMINAL JUSTICE PROCESS WHEN DECISION OCCURS	
	PRE-COMPLAINT DECISIONS	POST-COMPLAINT DECISIONS
a. Defendants administratively dismissed	0	276
b. Defendants with charges downgraded to disorderly persons offenses	0	819
c. Defendants accepted for pre-trial diversion	0	
d. Defendants otherwise screened out	0	58
e. Defendants with change of venue	0	12
f. Accusations filed	0	
g. Defendants with either indictable complaints authorized or charges approved for grand jury	0	
h. AOC Correction: Defendants who completed grand jury	0	31
<b>TOTAL SCREENING DECISIONS FOR 2018 (add a - h)</b>	<b>0</b>	<b>1,196</b>

Rev. 2010

## **DEFENDANT APPLICATIONS FOR DIVERSION PROGRAM, ACTION TAKEN AND OUTCOME**

### **Pre-Trial Intervention Diversion Program**

	<b>Number of DEFENDANT APPLICATIONS FOR PRE- TRIAL INTERVENTION</b>	
	<b>PRE-INDICTMENT</b>	<b>POST-INDICTMENT</b>
1. Applications reviewed	123	57
2. Recommended for acceptance	101	35
3. Recommended for rejection	34	38
4. Accepted into Program	101	35

Rev. 1995

**DEFENDANTS PENDING GRAND JURY PROCESS  
(Pre-Indictment Defendant Cases)  
BY AGE OF COMPLAINT**

AGES OF PRE-INDICTMENT DEFENDANT CASES FROM DATE OF COMPLAINT	NUMBER OF DEFENDANTS	
	ACTIVE	INACTIVE/FUGITIVE
1. 0 to 1 month	157	0/0
2. 1+ to 2 months	218	0/0
3. 2+ to 3 months	233	0/0
4. 3+ to 4 months	303	0/1
5. Over 4 months	1,338	0/44
6. TOTAL defendant cases pending grand jury	<b>2,249</b>	<b>0/45</b>

Rev. 1999

### DEFENDANTS COMPLETING THE GRAND JURY PROCESS AND ACTION TAKEN

ACTION TAKEN	NUMBER OF DEFENDANTS
1. Defendants presented to the grand jury	347
2. Defendants indicted	347
3. Defendants not billed and remanded to municipal court	0
4. Defendants not billed/no action	0
5. TOTAL defendants completing the grand jury process	347

### DEFENDANTS CHARGED BY ACCUSATION

	NUMBER OF DEFENDANTS
TOTAL Defendants charged through Accusation	360

Rev. 1995

## SPECIAL PROSECUTIONS UNIT: INVESTIGATIVE WORKLOAD AND DISPOSITIONS

INVESTIGATIVE WORKLOAD AND DISPOSITIONS	NUMBER OF INVESTIGATIONS BY TYPE -- Original and Post-complaint investigations						
	Original Investigations Conducted Jointly With:				Original Exclusive Investigations	TOTAL Original Investigations	TOTAL Post-complaint Investigations
	Local Police	State Agency	Other County Prosecutor	Other Agency			
17. Investigations pending or inactive at the beginning of the year					11	11	0
18. Investigations opened during the year	1				44	45	0
19. TOTAL Investigative workload for the year (add nos. 1 - 2)	1				55	56	0
20. TOTAL Investigations completed during this year (add a. - d.)					42	42	0
m. Resulting in criminal charges					25	25	
n. Referred to other agency for criminal prosecution					4	4	
o. Referred to other agency for civil or administrative action		1		1		2	
p. Closed - No further action	1	1			9	11	
21. Investigations pending or inactive at the end of the year					16	16	0

Rev. 1995

## SPECIAL PROSECUTIONS UNIT: DISPOSITIONS OF ORIGINAL INVESTIGATIONS RESULTING IN CRIMINAL CHARGES

DISPOSITION OF ORIGINAL INVESTIGATIONS RESULTING IN CRIMINAL CHARGES	NUMBER OF DEFENDANTS
1. Defendants charged by complaint, TOTAL	31
m. Defendants with complaints administratively dismissed	0
n. Defendants with complaints downgraded to disorderly persons offenses	8
o. Defendants with complaints referred to Family Court	1
p. Defendants with complaints presented to grand jury	8
2. Defendants with original charges presented to grand jury on direct presentment	0
3. Defendants charged through accusation	3
4. Defendants completing grand jury process on direct presentment and complaint presentation, TOTAL	8
j. Defendants indicted	8
k. Defendants no billed and remanded to municipal court	0
l. Defendants no billed/no action	0

Rev. 1995

## SPECIAL VICTIMS UNIT: INVESTIGATIVE WORKLOAD AND DISPOSITIONS

INVESTIGATIVE WORKLOAD AND DISPOSITIONS	NUMBER OF INVESTIGATIONS BY TYPE -- Original and Post-complaint investigations						
	Original Investigations Conducted Jointly With:				Original Exclusive Investigations	TOTAL Original Investigations	TOTAL Post-complaint Investigations
	Local Police	State Agency	Other County Prosecutor	Other Agency			
22. Investigations pending or inactive at the beginning of the year	49 ADULT				23 CHILD	72	
23. Investigations opened during the year	194 ADULT/ CART				481 CHILD	675	
24. TOTAL Investigative workload for the year (add nos. 1 - 2)	243				504	747	
25. TOTAL Investigations completed during this year (add a. - d.)	60 ADULT				226 CHILD	286	
q. Resulting in criminal charges	19 ADULT				44 CHILD	63	
r. Referred to other agency for criminal prosecution			2	1	3	3	
s. Referred to other agency for civil or administrative action					0	0	
t. Closed - No further action	41 ADULT				179 CHILD	220	
26. Investigations pending or inactive at the end of the year	121 ADULT				75 CHILD	196	

Rev. 1995

## SPECIAL VICTIMS UNIT: DISPOSITIONS OF ORIGINAL INVESTIGATIONS RESULTING IN CRIMINAL CHARGES

DISPOSITION OF ORIGINAL INVESTIGATIONS RESULTING IN CRIMINAL CHARGES	NUMBER OF DEFENDANTS
1. Defendants charged by complaint, TOTAL	63
q. Defendants with complaints administratively dismissed	0
r. Defendants with complaints downgraded to disorderly persons offenses	0
s. Defendants with complaints referred to Family Court	0
t. Defendants with complaints presented to grand jury	6
2. Defendants with original charges presented to grand jury on direct presentment	0
3. Defendants charged through accusation	5
4. Defendants completing grand jury process on direct presentment and complaint presentation, TOTAL	6
m. Defendants indicted	6
n. Defendants no billed and remanded to municipal court	0
o. Defendants no billed/no action	0

Rev. 1995

## TRIAL UNIT: DEFENDANTS PENDING DISPOSITION OF CHARGES BY AGE OF INDICTMENT OR ACCUSATION

AGES OF POST-INDICTMENT DEFENDANT CASES FROM DATE OF INDICTMENT OR ACCUSATION	NUMBER OF DEFENDANTS			
	ACTIVE	INACTIVE / FUGITIVE	DIVERSIONARY	TOTAL
1. 0 to 3 months	46	0/1	0	<b>47</b>
2. 3+ to 6 months	2	0/1	0	<b>3</b>
3. 6+ to 9 months	0	0/0	0	<b>0</b>
4. 9+ to 12 months	67	0/43	0	<b>110</b>
5. 12+ to 24 months	156	0/133	0	<b>289</b>
6. 24+ months	93	53/1,371	0	<b>1,517</b>
7. TOTAL post-indictment/accusation defendant cases pending	<b>364</b>	<b>53/1,549</b>	<b>0</b>	<b>1,966</b>

Rev. 1995

## TRIAL UNIT: DEFENDANTS WITH INDICTMENTS/ACCUSATIONS DISPOSED BY OFFENSE CATEGORY AND MANNER OF DISPOSITION

MANNER OF DISPOSITION	HOM	KID	SXA	ROB	ARS	AAS	BUR	BRI	NAR	MIO	PER	TUT	FOR	WOF	CAE	GAM	WIR	OGO	FTR	OTH	
1. Guilty plea to most serious offense	4	1	14	32	14	72	70	0	197	0	2	83	15	48	6	0	0	30	2	17	<b>607</b>
2. Guilty plea to lesser indictable offense	9	0	5	19	1	8	3	0	10	0	0	10	0	2	1	0	0	7	1	1	<b>77</b>
3. Ind. dism., plea to dis. person offense	0	0	1	0	1	7	0	0	37	0	0	6	2	0	0	0	0	0	1	3	<b>58</b>
4. Guilty at trial, most serious offense																					
a. Jury	3	0	1	1	1	0	0	0	0	0	0	0	0	2	0	0	0	0	0	0	<b>8</b>
b. Non-Jury	0	0	1	0	0	0	0	0	0	0	0	0	0	0	0	0	0	0	0	0	<b>1</b>
5. Guilty at trial, lesser indictable offense																					
a. Jury	0	0	0	0	0	0	0	0	0	0	0	0	0	0	0	0	0	0	0	0	<b>0</b>
b. Non-Jury	0	0	0	0	0	0	0	0	0	0	0	0	0	0	0	0	0	0	0	0	<b>0</b>
6. Guilty at trial, dis. person offense																					
a. Jury	0	0	0	0	0	0	0	0	0	0	0	0	0	0	0	0	0	0	0	0	<b>0</b>
b. Non-Jury	0	0	0	0	0	0	0	0	0	0	0	0	0	0	0	0	0	0	0	0	<b>0</b>
7. Not guilty at trial																					
a. Jury	0	0	0	0	0	1	2	0	5	0	0	0	0	0	0	0	0	0	0	0	<b>8</b>
b. Non-Jury	0	0	0	0	0	0	0	0	0	0	0	0	0	0	0	0	0	0	0	0	<b>0</b>
8. Acceptance into diversion program	0	0	3	0	5	23	11	0	9	2	4	23	18	14	5	0	0	15	1	2	<b>135</b>
9. Dismissed over objection of pros.	0	0	0	0	0	0	1	0	0	0	0	0	0	0	0	0	0	0	0	0	<b>1</b>
10. Dismissed on motion of pros.	2	0	1	6	3	7	10	0	66	0	1	11	2	40	0	0	0	9	3	2	<b>163</b>
11. TOTAL dispositions	<b>18</b>	<b>1</b>	<b>26</b>	<b>58</b>	<b>25</b>	<b>118</b>	<b>97</b>	<b>0</b>	<b>324</b>	<b>2</b>	<b>7</b>	<b>133</b>	<b>37</b>	<b>106</b>	<b>12</b>	<b>0</b>	<b>0</b>	<b>61</b>	<b>8</b>	<b>25</b>	<b>1058</b>

## VICTIM/WITNESS NOTIFICATION SERVICES

NOTIFICATION SERVICES	NOTIFICATION PROVIDED TO					
	VICTIMS		Lay WITNESSES		Law Enforcement WITNESSES	
	YES	NO	YES	NO	YES	NO
Initial contact	X			X		X
Administrative dismissal	X			X		X
Remand to municipal court	X			X		X
Indictment returned	X			X		X
No bill	X			X		X
Acceptance into pre-trial intervention	X			X		X
Guilty plea	X			X		X
Not guilty at trial	X			X		X
Guilty at trial	X			X		X
Indictment dismissed	X			X		X
Sentence	X			X		X
Parole	X			X		X
Disposition of juvenile cases	X			X		X
Other (specify)						

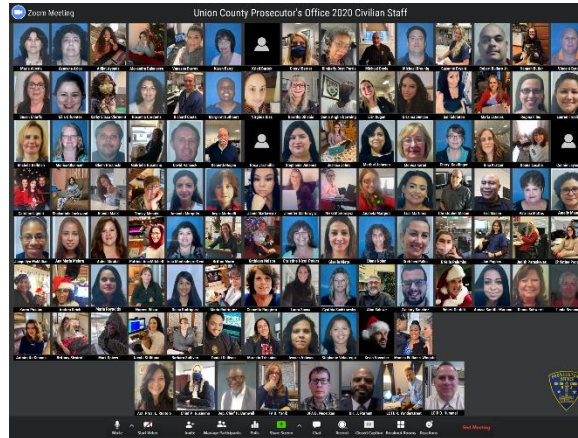
Rev. 1995

## VICTIM/WITNESS ASSISTANCE SERVICES PROVIDED

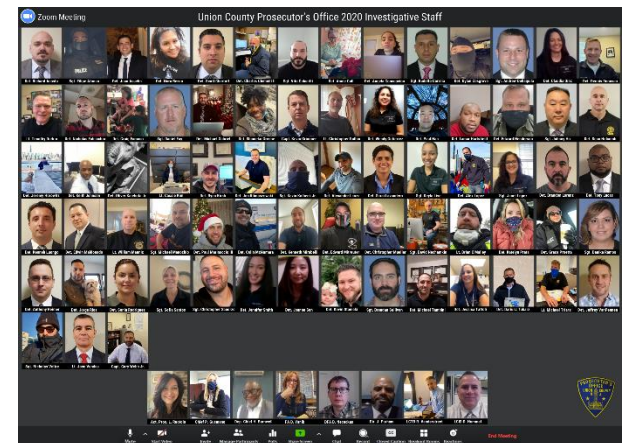
VICTIM/WITNESS ASSISTANCE SERVICES	SERVICE PROVIDED TO			
	VICTIMS		WITNESSES	
	Juvenile Cases	Adult Cases	Juvenile Cases	Adult Cases
<b>INFORMATION AND REFERRAL SERVICES</b>				
Introductory brochure	X	X		
Criminal Justice system orientation	X	X		
Case information	X	X		
VCCB referral	X	X	X	X
Social service information/referral	X	X	X	X
Crime prevention information/referral	X	X	X	X
Property return information	X	X		
Witness fee information				
Public education, community awareness	X	X		
<b>LOGISTIC SERVICES</b>				
Stand-by subpoena and call	X	X	X	X
Witness waiting area	X	X	X	X
Response to witness intimidation, harassment	X	X	X	X
Restitution recommendation at sentencing	X	X		
VCCB claim assistance	X	X	X	X
Social service intervention	X	X	X	X
Employer/student intervention	X	X	X	X
Travel, lodging assistance	X	X	X	X
Transportation assistance	X	X	X	X
Child care assistance	X	X	X	X
Property return assistance	X	X		
Witness fee assistance				
Victim impact statement assistance	X	X		
Counseling	X	X		
Other (specify)				

Rev. 1995

# The UCPO Family



From left, the fully virtually submitted 2020 legal, clerical, and investigative staff photos of the Union County Prosecutor's Office.



# Union County Prosecutor's Office Executive Leadership

**Lyndsay V. Ruotolo**  
Acting Prosecutor

**Doreen A. Yanik**  
First Assistant  
Prosecutor

**Derek C. Nececkas**  
Deputy First Assistant  
Prosecutor



**Jonathan Parham**  
Director of County-  
Wide Police Policy,  
Planning, & Training

**Patricia Gusmano**  
Chief of Detectives

**Harvey Barnwell**  
Deputy Chief of  
Detectives

Union County Prosecutor's Office • Andrew K. Ruotolo, Jr. Justice Center •  
32 Rahway Avenue, Elizabeth, New Jersey 07202 • [www.ucnj.org/prosecutor](http://www.ucnj.org/prosecutor)

 [ucnj.org/prosecutor](http://ucnj.org/prosecutor)

 [@UCPONJ](https://twitter.com/UCPONJ)

 [linkedin.com/company/UCPONJ](https://www.linkedin.com/company/UCPONJ)

 [Union County Prosecutor's Office](https://www.youtube.com/UnionCountyProsecutorsOffice)