

2014

HOMELESS SERVICES

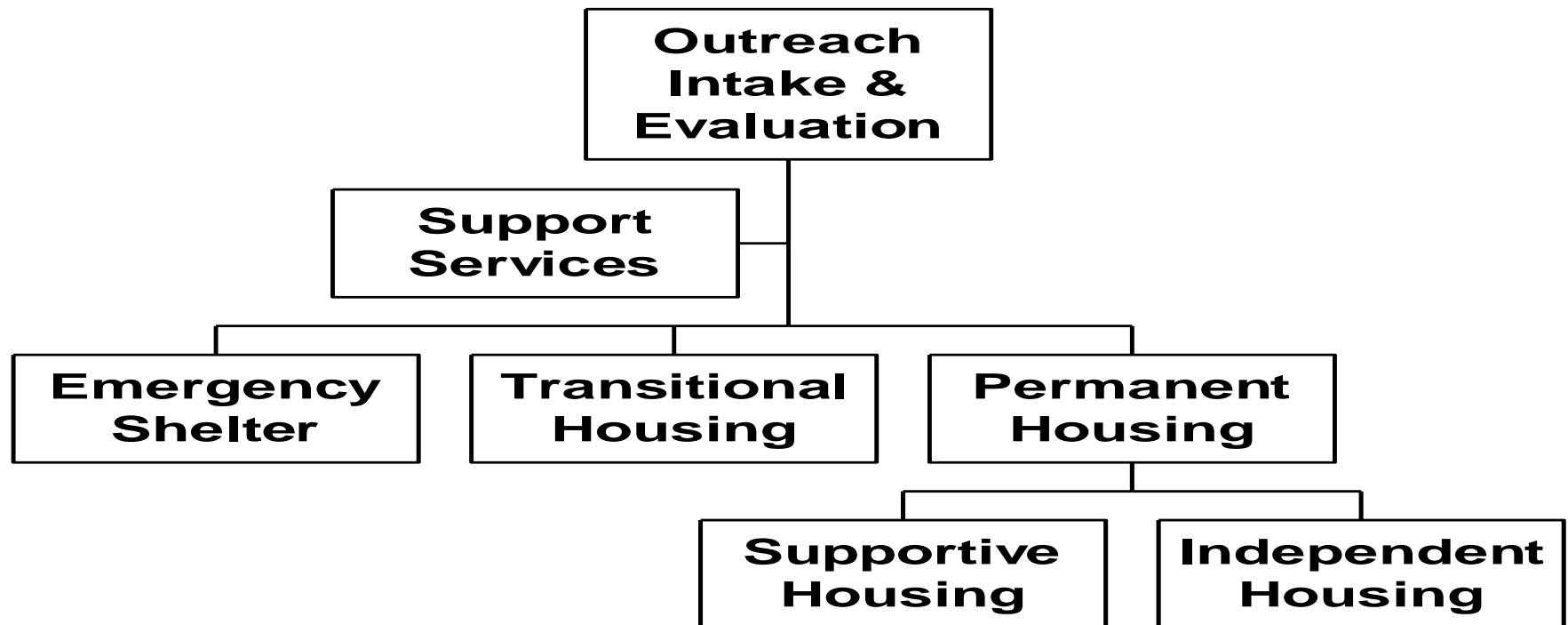
RESOURCE DIRECTORY

**The Continuum of Care Available
in the
County of Union
in the
State of New Jersey**



7th Edition

Union County Continuum of Care System Client Flow



DEPARTMENT OF HUMAN SERVICES

Frank L. Guzzo, Director

June, 2014

**BOARD OF
CHOSEN FREEHOLDERS**

CHRISTOPHER HUDAK
Chairman

MOHAMED S. JALLOH
Vice Chairman

BRUCE H. BERGEN

LINDA CARTER

ANGEL G. ESTRADA

SERGIO GRANADOS

BETTE JANE KOWALSKI

ALEXANDER MIRABELLA

VERNELL WRIGHT

ALFRED J. FAELLA
County Manager

WILLIAM REYES, JR.
Deputy County Manager

ROBERT E. BARRY, ESQ.
County Counsel

JAMES E. PELLETTIERE
Clerk of the Board

MELISSA LESPINASSE
Acting Division Director

Dear Colleagues:

On behalf of the Union County Board of Chosen Freeholders, County Manager and the Department of Human Services, the Division of Planning is pleased to provide the community-at-large with the *2014 Homeless Services Resource Directory: The Continuum of Care Available in Union County, NJ – our seventh edition*. Government has worked diligently with the Comprehensive Emergency Assistance System and Continuum of Care (CEAS/CoC) Committee and local human service agencies in updating this user-friendly desk reference.

The *2014 Directory* is a resource inventory for professionals to locate the most appropriate agency to help individuals or families who are in need of homeless assistance services for emergency shelter, transitional housing, supportive housing, or permanent supportive housing. The document also includes a variety of short-term homeless prevention services necessary for clients to maintain their current housing arrangement, including but not limited to, food, utility, security, mortgage or rental assistance. *Please be aware that the availability of any homeless service described in this document is contingent upon each client's program eligibility, as well as sufficient funding. Inclusion of any agency or organization in this document does NOT imply endorsement of its purpose, NOR does omission imply disapproval of any entity.*

The mission of the Union County Department of Human Services is to coordinate and deliver quality, cost-effective programs and services that recognize and respond to quality-of-life needs of Union County's elderly, poor, underemployed and youth populations. The Division of Planning's responsibility is to facilitate provision of a wide variety of countywide social and supportive service programs, including but not limited to, those homeless assistance services made available by local provider agencies.

If you have any questions about the *2014 Homeless Services Resource Directory*, or if you need additional copies, please call the Union County Homeless Program Coordinator at (908) 527-4841.

Sincerely,

Melissa Lespinasse

Melissa Lespinasse
Acting Director
UC Division of Planning

DIVISION OF PLANNING

Elizabethtown Plaza

*Administration Building
Elizabeth, NJ 07207 (908)527-4842 fax(908)558-2562*

www.ucnj.org

We're Connected to You!

HOMELESS SERVICES RESOURCE DIRECTORY

INTRODUCTION

Welcome to the seventh edition of the Union County Homeless Services Directory. The directory was produced as a cooperative effort of the member agencies of the Comprehensive Emergency Assistance System and Continuum of Care (CEAS/CoC) Committee, and the County of Union's Department of Human Services – Division of Planning.

Inclusion of an agency or organization in this directory does not imply endorsement of its purpose, nor does omission necessarily imply disapproval. The Committee gratefully acknowledges the cooperation of agencies and organizations that submitted the information contained within.

The Committee has made every effort to obtain accurate and current information; however, it makes no representation or warranties to that effect.

ACKNOWLEDGEMENTS

The creation of this resource tool was a cooperative effort of the member agencies of the Comprehensive Emergency Assistance System and Continuum of Care (CEAS/CoC) Committee, and the County of Union's Department of Human Services - Division of Planning. The purpose of the Directory is to assist the professional in serving persons with emergency needs such as food, shelter, or utility assistance, as well as support services.

This Directory presents a variety of available programs. The primary target population served through this Directory includes the low income, the homeless, or those residents at risk of becoming homeless. Services to many special populations are available. The agencies listed offer a range of emergency and support services which follow the Continuum of Care model as developed by the US Department of Housing & Urban Development. The Continuum of Care strategy in Union County includes the gamut of services needed to move a client from point of intake/assessment through the needed shelter and support services until permanent housing is attained.

The CEAS/CoC Committee consists of local agencies, public and private, that are committed to providing quality, basic needs such as food and shelter, as well as other support services which will assist persons in need to stabilize their situation and attain self-sufficiency. The CEAS/CoC Committee is a standing subcommittee of the Human Services Advisory Council (HSAC). The CEAS/CoC Committee meets the second Thursday of each month (excluding July and August). Meetings are open to the public; anyone interested in attending should contact the County Department of Human Services, CEAS/CoC Committee staff at (908) 527-4861. The CEAS/CoC Committee reviews the existing service network, identifies service gaps, and strives to enhance programs to better meet the needs of our community. Your input is valued. Please contact staff with any suggestions or recommendations you may have. Also, your comments on the Directory are welcome.

SPECIAL ACKNOWLEDGEMENTS:

Union County Comprehensive Emergency Assistance Systems and Continuum of Care (CEAS/CoC) Committee

Linda Flores Tober, Chair 2014 - 2015

Tahlia Welsh, Co-Chair 2014 - 2015

County of Union

Alfred J. Faella, County Manager

William Reyes, Jr., Deputy County Manager

Frank Guzzo, Department of Human Services/Director

Karen Dinsmore, Department of Human Services/Assistant Director

Elizabeth Sebring, Department of Human Services/Confidential Aide

Trisha Stone, Division of Planning/Director

Melissa Lespinnasse, Acting Director/Planning

Christina M. Topolosky, CoC Coordinator

Raymond Gora, Program Development Specialist

James F. Frazilus, Program Development Specialist

Leslie Gutierrez, Program Development Specialist

Laura Bellevue, Community Service Worker

<http://ucnj.org/government/human-services/division-of-planning-hs/union-county-continuum-of-carehomeless-unit>

SERVICE CATEGORY DEFINITIONS

Advocacy/Outreach - is the provision of assistance to clients for the purpose of negotiating and obtaining the services and/or supports they need in order to maintain living in the community.

Assessment - is a process that an agency uses to follow-up the intake. Clients are assessed to determine what action plan an agency would take to assist the individual. There are various assessment tools agencies use to determine what services they are able to provide.

Case Management - includes the provision of on-going assistance and support to help clients achieve their goals in the areas of housing, financial aid, and other supports.

Emergency Shelter (ES) – provides homeless persons with temporary basic shelter and essential supportive services.

Food - assistance is provided to eligible persons/families to assist in meeting basic nutritional needs in an emergency situation. Food assistance is contingent upon availability of funds. Each funding source may have specific client eligibility criteria.

Information & Referral - is a process that provides an individual with specific eligibility criteria for program services. Referrals may be made at this time. This consists of giving the individual the name, phone number, household information, and/or a contact person at agencies. The referred agency may require a phone call from the referring agency or a letter to accompany the individual.

Intake - is a process where an agency meets or speaks on the phone with an individual to discuss initial eligibility for their agency and/or programs. This is an information gathering process where past and present information is solicited and provided.

Rent/Mortgage/Security Assistance - is provided to eligible persons/families to assist in maintaining permanent housing by preventing displacement/eviction/foreclosure. Rent/Mortgage/Security assistance is contingent upon availability of funds. Each funding source may have specific client eligibility criteria. This assistance also requires that the landlord/mortgage company not take eviction/foreclosure action against the client once payment is provided; and evidence that the client can reasonably maintain future rent/mortgage payments. All payments are made directly to the landlord/mortgage company/bank.

Shelter Plus Care (S+C) – provides housing and supportive services on a long-term basis for homeless persons with disabilities, (primarily those with serious mental illness, chronic problems with alcohol and/or drugs, and HIV/AIDS, or related diseases) and their families who were living in places not intended for human habitation (e.g., streets) or in emergency shelters.

Supportive Housing Program (SHP) – offers housing and supportive services to allow homeless persons live as independently as possible.

Transitional Housing (TH) – provides homeless persons shelter for up to 24 months with supportive services to enable them to live more independently and move to permanent housing.

Utility/Fuel Assistance – are provided to eligible persons/families to assist in maintaining an adequate, healthy environment by the prevention of a utility shut-off or fuel crisis. Utility/fuel voucher assistance is contingent upon availability of funding. Each funding source may have specific client eligibility criteria. All payments are made directly to the utility or fuel company.

AGENCY PROFILE INDEX

American Red Cross Raritan Valley Chapter.....	1
Brand New Day.....	1
Bridgeway Rehabilitation Services, Inc.....	1
Catholic Charities Archdiocese of Newark.....	2
Central Jersey Legal Services.....	2
Community Access Unlimited.....	2
Community Health Law Project.....	3
Community Hope (Veterans Administration).....	3
Early Intervention Program - Trinitas Regional Medical Center.....	4
El Centro Hispanoamericano.....	4
Elizabeth Coalition to House the Homeless.....	5
Elizabethport Presbyterian Center.....	6
Esperanza Self Help Center.....	6
Faith, Bricks & Mortar, Inc.....	7
Family and Children's Services.....	7
Family Promise Union County.....	8
FISH Hospitality Program, Inc.....	8
Flynn Christian Fellowship Houses of New Jersey.....	9
Greater Plainfield Habitat for Humanity, Inc.....	9
HFH Greater Elizabeth Area, Inc. (HFHGEAI).....	9
HIV Counseling, Testing and Referral Services.....	10
Homefirst, Inc.....	10
Home Sharing, Inc.....	11
Hyacinth AIDS Foundation.....	11
Jefferson Park Ministries.....	12
Jewish Family Services of Central New Jersey.....	13
Mt. Carmel Guild Behavioral Health.....	14
Mt. Carmel Guild Behavioral Health ICMS.....	14
Neighborhood Health Services Corp.....	14
Plainfield Action Services.....	15
Plainfield Area YMCA.....	15
PROCEED, Inc.....	16
Raphael's Life House.....	17
St. Joseph's Social Service Center.....	17
Salvation Army – Elizabeth.....	18
Salvation Army – Plainfield.....	19
SERV Centers of New Jersey.....	19
StreetLight Mission.....	19
Union County Division on Aging.....	20
Union County Psychiatric Clinic Behavioral Healthcare, Inc.....	20
United Family & Children's Society.....	21
United Way of Greater Union County.....	21
Urban League of Union County, Inc.....	22
Veterans Affairs Community Health Practice.....	22
Volunteers of America.....	23
YMCA of Eastern Union County.....	23
YWCA of Central New Jersey.....	24
YWCA of Eastern Union County.....	24
Appendix A – A Guide to Affordable Housing in Union County.....	26
Appendix B – Union County Welfare & Workforce (One-Stop) Offices.....	27

Appendix C – Food Pantry / Meals Information.....	28
Appendix D – Nutrition Program for Seniors.....	32
Appendix E - Utility / Rent Assistance Information / Code Blue / SHRAP.....	33
Appendix F – Clothing / Furniture Donations.....	35
Appendix G – Homeless Education Liaison.....	36
Appendix H – Immigration Services.....	37
Appendix I – Legal Assistance / Resources.....	38
Appendix J - HUD – VASH	39
Appendix K - Correction Form for Resource Directory.....	40

FUNCTIONAL INDEX OF HOMELESS SERVICE PROVIDERS

Information/Assessment/Referral Services

(Includes case management, evaluation, documentation, and implementing appropriate action)

American Red Cross Tri-County Chapter.....	1
Bridgeway Rehabilitation Services, Inc.....	1
Catholic Charities Archdiocese of Newark.....	2
Central Jersey Legal Services.....	2
Community Access Unlimited.....	2
Community Health Law Project.....	3
Early Intervention Program – Trinitas Regional Medical Center.....	4
El Centro Hispanoamericano.....	4
Elizabeth Coalition to House the Homeless.....	5
Elizabethport Presbyterian Center.....	6
Esperanza Self Help Center.....	6
Family and Children's Services.....	7
FISH Hospitality Program, Inc.....	8
Homefirst, Inc.....	10
Jefferson Park Ministries.....	12
Jewish Family Services of Central New Jersey.....	13
Neighborhood Health Services Corp.....	14
Plainfield Action Services.....	15
Plainfield Area YMCA.....	15
PROCEED, Inc.....	16
Raphael's Life House.....	17
St. Joseph's Social Service Center.....	17
Salvation Army – Elizabeth.....	18
Salvation Army – Plainfield.....	19
StreetLight Mission.....	19
United Family & Children's Society.....	21
United Way of Greater Union County.....	21
Urban League of Union County, Inc.....	22
YMCA of Eastern Union County.....	23
YWCA of Central NJ.....	24

PREVENTION SERVICES

(Includes rent/mortgage/security/utility/legal assistance as well as health & special services in some cases)

Catholic Charities Archdiocese of Newark.....	2
Central Jersey Legal Services.....	2
Community Health Law Project.....	3
Early Intervention Program - Trinitas Regional Medical Center.....	4
Elizabeth Coalition to House the Homeless.....	5
HIV Counseling & Testing - Trinitas Regional Medical Center.....	10
Hyacinth AIDS Foundation.....	11
Neighborhood Health Services Corp.....	14
Plainfield Action Services.....	15
PROCEED, Inc.....	16
Salvation Army – Elizabeth.....	18
Union County Psychiatric Clinic Behavioral Healthcare, Inc.....	20
Urban League of Union County, Inc.....	22

EMERGENCY SHELTER

(Placement in family/individual shelters or short-term motel/hotel placement)

Elizabeth Coalition to House the Homeless.....	5
Family Promise.....	8
FISH Hospitality Program, Inc.....	8
Homefirst, Inc.....	10
Plainfield Area YMCA.....	15
Salvation Army – Elizabeth.....	18
YMCA of Eastern Union County.....	23
YWCA of Eastern Union County.....	24

TRANSITIONAL HOUSING

(Temporary housing with comprehensive services to aid in attaining self-sufficiency & securing permanent housing)

Community Access Unlimited.....	2
Elizabeth Coalition to House the Homeless.....	5
Flynn Christian Fellowship Houses of New Jersey.....	9
Homefirst, Inc.....	10
PROCEED, Inc.....	16
Raphael's Life House.....	17
SERV Centers of New Jersey, Inc.....	19
YMCA of Eastern Union County.....	23

PERMANENT SUPPORTIVE HOUSING

(Short-term or long-term housing for families or individuals with on or off-site staff and services which is affordable, such as subsidized housing)

Brand New Day.....	1
Bridgeway Rehabilitation Services, Inc.....	1
Community Access Unlimited.....	2
Elizabeth Coalition to House the Homeless.....	5
Faith, Bricks & Mortar, Inc.....	7
Greater Plainfield Habitat for Humanity.....	9
Homefirst, Inc.....	10
Plainfield Area YMCA.....	15
Volunteers of America.....	23
YMCA of Eastern Union County.....	23
YWCA of Eastern Union County.....	24

* SEE SEPARATE LIST OF AFFORDABLE HOUSING LOCATIONS * Appendix A AND UNION COUNTY HOUSING AUTHORITIES

FOOD ASSISTANCE

(May include food voucher; food pantry; soup kitchen)

American Red Cross Raritan Valley Chapter.....	1
Catholic Charities Archdiocese of Newark.....	2
Early Intervention Program - Trinitas Regional Medical Center.....	4
El Centro Hispanoamericano.....	4
Elizabethport Presbyterian Center.....	6
Jefferson Park Ministries.....	12
Jewish Family Services of Central New Jersey.....	13
Plainfield Action Services.....	15
PROCEED, Inc.....	16
St. Joseph's Social Service Center.....	17
Salvation Army – Elizabeth.....	18
Salvation Army – Plainfield.....	19
StreetLight Mission.....	19

* SEE SEPARATE LISTING OF ADDITIONAL FOOD / MEAL PROVIDERS * Appendix C

AMERICAN RED CROSS RARITAN VALLEY CHAPTER (ARCRVC)**Telephone: (908) 232-7090****Fax #: (908) 232-4452****321 Elm Street, Westfield, NJ 07090****Office Hours: 9:00 AM - 5:00 PM****Days of Operation: Monday through Friday****Areas Served: Union, parts of Middlesex and Somerset County****Website: <http://www.redcross.org/>****Program: Counseling Services, Information & Referral, Senior Services Transportation****Program Fees: None for the disaster services****Target Population: Individuals and families affected by disaster****Language Spoken: English****Accessibility: Accessible to people with disabilities and by public transportation****Program Eligibility: Union County Residents****Program Description: Counseling services for disaster victims with resources & referral.**

Food referrals are provided to eligible persons/families in emergency situations.

Please refer to the Service Category Definitions page for more detail – page# ii

This agency also provides:

Health and safety courses in cardiopulmonary resuscitation (CPR), First Aid, babysitter's training, and emergency preparedness to mention a few

Transportation assistance for Westfield residents over the age of 62 to doctor appointments, shopping, etc. in Westfield by prior arrangement

For disaster response and emergency response to the Armed Forces call 888-607-0488.

BRAND NEW DAY, INC. (BND)**Telephone: (908) 282-0781****Fax #: (908) 282-0788****176 First Street, Elizabeth, NJ 07206****Office Hours: 9:00 AM-5:00 PM****Days of Operation: Monday through Friday****Areas Served: Elizabeth and surrounding communities****Website: <http://brandnewdaycdc.org>****Program: Permanent Housing, Home Ownership Counseling, Financial Literacy and Foreclosure Assistance****Program Fees: None****Target Population: Families, Elderly, HIV/AIDS, Immigrants, Mentally Ill, and Persons with Disabilities, Persons affected by Domestic Violence, Pregnant Women, Single Adults, Substance Abusers, and Veterans****Languages Spoken: English/Spanish****Accessibility: Program is accessible to persons with disabilities and by public transportation****Intake Procedure: Must meet income guidelines****Program Description: Housing Counseling - Counseling in the areas of budgeting and credit, pre-purchase, post-purchase, assistance with forbearance agreements, assignments, and mortgage default/delinquency services are offered.****BRIDGEWAY REHABILITATION SERVICES, INC. (BWY)****Telephone: (908) 249-4100****Fax #: (908) 249-4106****265 W. Grand Street, Elizabeth, NJ 07202****Office Hours: 9:00 AM - 4:30 PM (after hours support by phone)****Days of Operation: Monday through Friday****Area Served: Union County, with PACT Teams in Elizabeth, Plainfield, Union, Jersey City, Hasbrouck Heights, Little Falls, Manville, and Washington****Website: <http://bridgewayrehab.com/>****Program: Advocacy/Outreach, Assessment, Case Management, Homeless Outreach, Information/Referral, Intake, Justice Involved Services, Partial Care, Permanent Housing, Supportive Housing****Location: Administrative Office: 615 North Broad Street, Elizabeth, NJ 07208**

Supportive Housing & Homeless Outreach: 265 W. Grand St., Elizabeth, NJ 07202

Telephone: Hotline/Emergency: (908) 289-7330 or fax referrals to (908) 668-3174**Contact: Program Coordinator****Program Fees: None****Target Population: Mentally Ill, Single Adults, Elderly, HIV/AIDS, Substance Abusers, Veterans****Languages Spoken: English, Spanish**

Accessibility: Program is accessible to persons with disabilities and by public transportation
Program Eligibility: Homeless, Mentally Ill, Single adults in Union County
Program Description: Supportive Housing is long or short term shared housing with support staff and services.
This agency also provides:

- Advocacy/Outreach
- Assessment
- Case Management
- Homeless Outreach
- Information & Referral
- Intake
- Justice Involved Services

Please refer to the Service Category Definitions page for more detail – page# ii

CATHOLIC CHARITIES ARCHDIOCESE OF NEWARK (CCAN)

Telephone: (908) 497-3966

Fax #: (908) 276-7185

505 South Avenue East, Cranford, NJ 07016

Office Hours: 9:00 AM – 4:30 PM

Days of Operation: Monday through Friday

Area Served: Union County

Website: <http://www.ccannj.com/>

Program: Assessment, Food Assistance, Information/Referral, Intake, Rent/Mortgage/Security Assistance, Utilities Assistance

Please refer to the Service Category Definitions page for more detail – page# ii

Contact: Case Manager

Program Fees: None

Target Population: Elderly, Ex-offenders, Families, HIV/AIDS, Mentally Ill, Single Adults, Immigrants, Refugees

Languages Spoken: English, Spanish

Accessibility: Program is accessible to persons with disabilities and by public transportation

CENTRAL JERSEY LEGAL SERVICES, INC. (CJLS)

Telephone: (908) 354-4340

Fax #: (908) 354-4361

60 Prince Street, Elizabeth, NJ 07208

Office Hours: 9:00 AM - 5:00 PM

Days of Operation: Monday through Friday

Area Served: Union County

Website: <http://www.lsnj.org/cjls/>

Program: Legal Assistance, Advocacy/Outreach

Contact: Telephone or walk-in

Target Population: Elderly, Families, HIV/AIDS, Mentally Ill, Persons with Disabilities, Persons Affected by Domestic Violence, Pregnant Women, Runaway Youth, single Adults, Substance Abusers, Teens, Veterans - (All In Need) - very low income residents of Union County

Languages Spoken: English, Spanish, Portuguese, and French (all other languages via Language Line)

Accessibility: Program is accessible to persons with disabilities and by public transportation

Program Description: Central Jersey Legal Services provides free legal assistance to very low income residents of Union County in civil matters such as: consumer, domestic violence, education, family, health related matters, landlord/tenant, Social Security, and welfare.

You may also contact the statewide office – Legal Services of New Jersey (LSNJ) by a toll-free Hotline 1-888-LSNJ-LAW (1-888-576-5529) or Legal Services of New Jersey, P.O. Box 1357, Edison, NJ 08818-1357.

COMMUNITY ACCESS UNLIMITED (CAU)

Telephone: (908) 354-3040

Fax #: (908) 354-2665

80 W. Grand Street, Elizabeth, NJ 07208

Office Hours: 8:00 AM - 6:00 PM

Days of Operation: Monday through Friday

Areas Served: Union County; Statewide (depending on program)

Website: <http://www.caunj.org/>

Program: Assessment, Case Management, Home Sharing Service, Information & Referral, Intake, Permanent Housing, Rent Assistance, and Transitional Housing

Contact: Coordinator of Information & Referral – Ext. 272

Program Fees: None (Donations accepted)

Target Population: Elderly, Families, HIV/AIDS, Immigrants, Mentally Ill, Persons with Disabilities, Persons Affected by Domestic Violence, Pregnant Women, Runaway Youth, Single Adults, Substance Abusers, Teens, Veterans

Languages Spoken: English (and other languages available)

Accessibility: Program is accessible to people with disabilities and by public transportation

Program Description: Home Share provides another housing option for potentially homeless individuals. Matches are made between a provider (home-owner) and a seeker (person seeking residence).
Transitional Housing has a maximum stay for clients of up to two years. Supportive services to promote self-sufficiency (life skills) and assistance with obtaining permanent housing are offered. Some transitional units are apartment style and some require that areas (such as kitchen/dining) are shared with other families.
Permanent Housing is lasting shelter provided for families or individuals who have become homeless or are in danger of becoming homeless.
This agency also provides:

- Assessment
- Case Management
- Information/Referral
- Intake

Please refer to the Service Category Definitions page for more detail – page# ii

COMMUNITY HEALTH LAW PROJECT (CHLP)

65 Jefferson Avenue, 4th fl., Elizabeth, NJ 07201

Telephone: (908) 355-8282

Fax #: (908) 355-3724

Office Hours: **Monday through-Thursday: 9:00 AM-5:00 PM; Friday: 9:00 AM -4:00 PM**

Days of Operation: **Monday through Friday**

Areas Served: **Union/Hudson Counties**

Website: <http://www.chlp.org/>

Program: Advocacy/Outreach, Information & Referral, Legal Representation

Contact: Staff Attorney or Staff Advocate

Program Fees: None except in certain SS/SSI Disability Appeals

Target Population: Indigent Mentally Ill & Persons with Developmental Disabilities; Elderly (Union County)

Languages Spoken: English, Spanish

Accessibility: Program is accessible to persons with disabilities and by public transportation

Program Description: Individual legal representation (in civil legal matters) and advocacy for indigent Union and Hudson County residents over the age of 18 who reside in the community and have a history of psychiatric hospitalization or who are current or former recipients of mental health services. The Law Project also provides services to indigent persons with developmental disabilities, persons with physical disabilities, and elderly residents of Union County.

Services include: assistance with Social Security/SSI and other public entitlement cases (e.g. General Assistance, TANF, Food Stamps, Medicaid, Medicare); family cases (e.g. non-support); housing cases (evictions, assistance to residents of boarding facilities, homeless matters, access to community housing); and information & referral.

COMMUNITY HOPE (CH) Hope for Veterans

Mailing address: 151 Knollcroft Rd., Lyons, NJ 07920 BLDG #53

Tel.: (908) 647-5717

Fax #: (908) 647-9013

Office Hours: **9:00 AM – 5:00 PM**

Days of Operation: **Monday - Friday**

Areas Served: **Middlesex, Morris, Passaic, Somerset, Sussex, Union and Warren Counties**

Website: <http://www.communityhope-nj.org/>

Program: Housing and support services

Contact: Intake Specialist Extension (908) 647-5717 ext. 311 or ext.325 (for Hope for Veterans Program)

Accessibility: Program is accessible to persons with disabilities and by public transportation

- Program Description:** Transitional Housing for homeless veterans recovering from mental illness and/or substance abuse located on the grounds of the VA Medical center in Lyons, NJ.
Services include:
- Access to benefits and counseling in budgeting
 - Case Management
 - Employment assistance and training
 - Help with rent assistance, utility payments, security deposits, moving costs, childcare expenses, support services and transportation expenses. Call 1-855-483-8466 (Confidential 24 hour line)
 - Linkage to community resources
 - Onsite computer laboratory and computer skills training
 - Specialized discharge planning services and linkage to affordable housing
 - Transitional Housing for up to two years

EARLY INTERVENTION PROGRAM (EIP) Trinitas Regional Medical Center **Tel.: (908) 994-7600**

Mailing address: 655 East Jersey Street, Elizabeth, NJ 07206 **Fax #: (908) 994-7599**

Clinic Location: 655 Livingston St. - 2nd Floor, Elizabeth, NJ 07206

Office Hours: **8:30 AM-4:30 PM**

Days of Operation: **Monday through Friday**

Area Served: **Union County**

Website: <http://www.trinitasRMC.org/>

Program: Medical Case Management, HIV Education, Primary Medical / HIV Care

Contact: Program Director

Program Fees: None

Target Population: HIV+ age 18 and above

Languages Spoken: English, Spanish

Accessibility: Program is accessible to persons with disabilities and by public transportation

Program Description: EIP provides primary medical / HIV care to HIV positive patients 18 years of age and older. Medical care is provided by a staff made up of Board Certified Infectious Disease physicians, Physician Assistants, Nurse Practitioners, and Registered Nurses. Medical Case Management is provided to each client individually. An initial intake interview is completed to identify the needs of the patient. Referrals are made to assist in obtaining medications, housing, legal services, food, and access to substance abuse / behavioral health counseling if needed. This service provides ongoing assistance and support to help clients obtain the support services necessary to meet their goals. Onsite HIV education is provided to assist the client in learning their role in the management of HIV disease, the importance of treatment adherence, disclosure techniques, understanding their lab results, and various other topics that are essential to their well being. A multi-disciplinary team of compassionate, supportive health care professionals is available to meet the physical and emotional needs of the client.

EL CENTRO HISPANOAMERICANO (ECH)

Telephone: (908) 753-8730

525 East Front Street, Plainfield, NJ 07060

Fax #: (908) 753-8463

Office Hours: **10:00 AM - 5:00 PM, Monday, Tuesday & Thursday**

12:00 PM - 6:00 PM, Wednesday

10:00 AM – 3 PM, Friday

10:00 AM - 2:00 PM, Saturday

Days of Operation: **Office closed Sunday**

Area Served: **New Jersey Metropolitan area**

Website: <http://www.elcentronj.org/>

E-mail: **info@elcentronj.org**

Program: Advocacy/Outreach, Assessment, Case Management (Legal Matters), English as a Second Language classes, Food Assistance, Immigration Services, Information & Referral, Intake

Please refer to the Service Category Definitions page for more detail – page# ii

Program Fees: None

Target Population: Families, Immigrants, Single Adults (Hispanic Community)

Languages Spoken: English, Spanish, Portuguese

Accessibility: Program is accessible to persons with disabilities and by public transportation
Program Description: Non-perishable food items are provided once a week (Tuesdays 11:00 AM - 12:00 PM) to eligible persons/families to assist in meeting basic nutritional needs in an emergency situation. Bread is distributed Thursdays beginning at 11:00 AM.

ELIZABETH COALITION TO HOUSE THE HOMELESS (ECHH)

(908) 353-4006

118 Division Street, Elizabeth, NJ 07201

Fax #: (908) 355-5094

Office Hours: **9:00 AM – 12:00 PM, & 1:00 PM - 5:00 PM, Monday, Tuesday, Thursday, and Friday; (Closed 12:00 Noon – 1:00 PM) - Wednesday - 1:00 PM – 5:00 PM**

Days of Operation: **Monday through Friday**

Area Served: **Union County**

Website: <http://www.theelizabethcoalition.org/>

Program: Advocacy, Case Management, Housing, Rent/Mortgage Assistance
Please refer to the Service Category Definitions page for more detail – page# ii

Telephone: (908) 353-4006 (for services)

Contact: Advocate

Program Fees: None

Target Population: Homeless/Near Homeless Families or Single Adults

Languages Spoken: English, Spanish

Accessibility: Programs are accessible to persons with disabilities and by public transportation

Program Description: Case Management services include: intake and eligibility determination; assessment of client needs; development of an action plan; service information & referral. Advocacy services include activities such as: preparation and accompaniment to Fair Hearings; housing search; COPE (Clarify, Organize, Present, and Evaluate) Self Advocacy training; and special groups - Women's Groups/Housing Focus Group.

Program: Permanent Housing (Housing Search)

Telephone: (908) 355-2060 Ext. 301

Contact: Housing Coordinator

Hours and Days: 9:00 AM – 12 Noon, and 1:00 PM - 5:00 PM Monday, Tuesday, Thursday, and Friday
 1:00 PM – 5:00 PM Wednesday

Program Description: Assist clients with locating permanent housing. Provide tenants with information on: tenant rights and responsibilities; how to negotiate with a landlord; how to locate housing; and budgeting.

Target Population: Homeless/Near Homeless Families or Single Adults

Program: Rent/Mortgage Assistance

Telephone: (908) 355-2060 Ext. 301

Hours and Days: 9:00 AM – 12:00 Noon, and 1:00 PM - 5:00 PM Monday, Tuesday, Thursday, and Friday
 1:00 PM – 5:00 PM Wednesday

Program Description: Rent/mortgage vouchers
Please refer to the Service Category Definitions page for more detail – page# ii

Target Population: Homeless/Near Homeless Families or Single Adults

Program: Transitional Housing

Telephone: (908) 355-2060 Ext. 202

Contact: Hospitality House Coordinator

Hours and Days: 9:00 AM – 12:00 Noon, and 1:00 PM - 5:00 PM Monday, Tuesday, Thursday, and Friday; 1:00 PM – 5:00 PM Wednesday

Target Population: Homeless Families or Single Adults

Program Description: Transitional Housing provides shared living quarters combined with intensive Case Management services including: job search; psychological counseling; assistance in locating permanent housing; budgeting; and supplemental supports such as food, clothing, and furniture. Follow-up is done as needed. (Note: all clients must be referred through the Advocacy/Case Management Program)

Program: Operation Warm Heart

Telephone: (908) 355-2060 Ext. 302

Hours and Days: Intake: Monday, Tuesday, Thursday, Friday 9:00 AM – 12:00 PM and 1:00 PM – 5:00 PM; Wednesday 1:00 PM – 5:00 PM

Target Population: Homeless Single Adults

Program Description: Emergency winter shelter opens December 1 – March 31

Program: Bernice's Place: An Oasis for Homeless Youth

Telephone: (908) 355-2060 Ext. 203

Contact: Children's Program Coordinator

Hours and Days: 9:00 AM – 12:00 Noon, and 1:00 PM - 5:00 PM Monday, Tuesday, Thursday, Friday and 1:00 PM – 5:00 PM, Wednesday

Program Description: The Children's Program provides after-school tutoring, enrichment, and peer support activities for homeless and formerly homeless children ages 6-12. Educational Advocacy is also conducted to ensure that each child receives appropriate educational services. A six week summer day camp is available for the same population.

ELIZABETHPORT PRESBYTERIAN CENTER (EPC)

Telephone: (908) 659-2184
Fax #: (908) 659-2183

200 Second Street, Elizabeth, NJ 07206

Office Hours: 9:00 AM - 5:00 PM

Days of Operation: Monday through Friday

Area Served: Union County

Website: www.eportcenter.org

Languages Spoken: English, Spanish

Accessibility: Program is accessible to persons with disabilities and by public transportation

Program: Food Assistance

Contact: Social Services

Hours and Days: Last Wednesday and Friday of the month 10:00 AM – 3:00 PM

Program Fees: None

Target Population: Families, Single Adults

Program Eligibility: Low-income, single adults and families

Intake Procedure: Must bring proof of income, residency, Social Security cards, and birth certificates of all members of the household.

Program Description: Food pantry services are provided to eligible persons/families to assist in meeting basic nutritional needs.

Program: Case Management

Days of Operation: 9:00 AM - 5:00 PM, Monday through Friday

Contact: Social Services Department

Program Fees: None

Target Population: Families, Single Adults

Intake Procedure: Intake application required and is reviewed by the social services department.

Program Description: Provides low-income persons with short term counseling, crisis intervention services. The goal of the program is to help clients determine appropriate community resources and make positive changes.

Program: Advocacy/Outreach

Days of Operation: 9:00 AM - 5:00 PM, Monday through Friday

Location: 200 Second Street, Elizabeth, NJ 07206

Telephone: (908) 659-2184, (Main Line): (908) 351-4850, Fax#: (908) 659-2183

Contact: Seniors Outreach Coordinator

Program Fees: None

Target Population: Elderly

Program Eligibility: Intake application required - services to low-income senior citizens.

Program Description: Provides outreach to low-income senior citizens in the Elizabeth area. Information about community resources for seniors is provided.

ESPERANZA SELF-HELP CENTER (ESHC)

Telephone: (908) 272-5296
Fax #: (908) 272-5285

361 - 363 Monroe Ave. - 1st Floor, Kenilworth, NJ 07033

Office Hours: 9:00 AM-1:00 PM

Days of Operation: Monday and Thursday

Area Served: No restrictions, but primarily Union County
Program: Advocacy for Spanish-speaking adults with mental illness, education, support
Contact: Facilitator
Program Fees: None
Target Population: Mentally Ill
Languages Spoken: Spanish/English
Accessibility: Program is accessible to persons with disabilities and by public transportation – and transportation can be provided
Program Description: Advocacy/Outreach
Please refer to the Service Category Definitions page for more detail – page# ii

FAITH, BRICKS & MORTAR, INC. (FBM)

Telephone: (908) 756-5774

Fax #: (908) 756-4413

164 E. Front Street (Rear), Plainfield, NJ 07060

Office Hours: 8:30 AM - 4:30 PM

Days of Operation: Monday through Friday

Area Served: Union County

Email: faithbricksandmortar@verizon.net

Program: Permanent Housing – 1st Time Home Buyers Program / Credit Repair, Financial Literacy, Homeownership, Mediation Referrals, and Mortgage/Foreclosure Counseling

Contact: Program Coordinator

Program Fees: None

Target Population: Families, Persons with Disabilities, Single Adults, Veterans

Languages Spoken: English, Spanish

Accessibility: Program is accessible to persons with disabilities

Intake Procedure: Must meet HUD income guidelines, complete an application, provide income/financial data, and attend a financial literacy workshop.

Program Description: For first time homebuyers that meet the HUD income guideline requirements, a \$25,000 grant is available for assistance with down payment and closing costs. The home to be purchased must be in Union County. FBM also provides housing counseling, credit information and other housing programs with a HUD certified counselor.

FAMILY AND CHILDREN'S SERVICES (FCS)

40 North Avenue, Elizabeth, NJ 07208

Telephone: (908) 352-7474

Hotline: (888) 297-0044

Fax #: (908) 965-3227

Office Hours: 9:00 AM - 9:00 PM, Monday through Thursday; 9:00 AM - 7:00 PM, Friday

Days of Operation: Monday through Friday

Area Served: Union County

Website: www.facsnj.org/

Email: info@facsnj.org

Programs: Youth Achieving Success Program, Youth Counseling Services, Post Adoption Services Kincaid Program, Transforming Trauma Program, Homeless Prevention Services (Monday through Friday 9:00 AM – 5:00 PM), and Counseling, Evaluations and Assessment

Locations: 40 North Avenue, Elizabeth, NJ 07208

16 Jefferson Avenue, Elizabeth, NJ 07201

Telephone: (908) 372-1007 Fax: (908) 372-1018

655 E. Jersey Street, Elizabeth, NJ 07206

Telephone: (908) 994-7449 – Trinitas Regional Medical Center New Point Campus

Contact: Program Supervisor

Program Fees: None with the exception of Fee Based Services such as Counseling, Evaluation and Assessment

Target Population: Children, Adolescents and Families

Languages Spoken: English, Spanish, French, Mandarin, Polish, Portuguese, and Taiwanese

Accessibility: Program is accessible to people with disabilities and by public transportation

Program Description: Youth programs provide a variety of counseling services to children and adolescents who are at risk for entering the Juvenile Justice System or are already in the system.

Ages vary from 9 - 14 to 15 - 21, at no cost to their families and receive a certain amount of free counseling sessions. The other programs provide free support, counseling, advocacy for children and their caretakers. Referrals are accepted by Division of Child Protection and Permanency (DCCP) as well as from the community. Homeless prevention services provide comprehensive therapeutic, evaluative and case management services to families at risk of homelessness. Case management focuses on the person-centered needs that include but are not limited to: budgeting, counseling and mental health treatment, emergency shelter, employment search, food, life skills, and transitional and permanent housing search.

Please refer to the Service Category Definitions page for more detail – page# ii

FAMILY PROMISE UNION COUNTY (FPUC)

Telephone: (908) 289-7300

402 Union Street (First Baptist Church), Elizabeth, NJ 07208

Fax #: (908) 289-7388

Office Hours: 24 hours a day

Days of Operation: 7 days a week

Area Served: Union County

Website: www.FamilyPromiseuc.org

Email: ucdirector@familypromise.org

Program: Family Promise-Union County's mission is to help homeless and low income families achieve sustainable independence.

Location: Union County congregations

Contact: Social Worker

Program Fees: None

Program Eligibility: No active substance abuse or current domestic violence

Target Population: Families

Languages Spoken: English

Accessibility: Program has limited accessibility to persons with disabilities and limited accessibility by public transportation. Accessibility also depends on the church which is the host.

Intake Procedure: Extensive intake interview for families with children.

Program Description: Hospitality provided by Union County congregations evenings and overnight with volunteer support. Professional case management provided at the day center. Linkages through volunteers will help identify resources for families.

FISH HOSPITALITY PROGRAM, INC. (FHP)

Telephone: (732) 968-5957

Mailing: P.O. Box 170, Dunellen, NJ 08812

Fax #: (732) 968-2870

Office Hours: 9:00 AM - 5:00 PM

Days of Operation: Monday through Friday

Area Served: Tri-county area of Union, Middlesex and Somerset

Website: <http://fishhospitality.com/>

Email: Fishhospsw@verizon.net

Program: Counseling /Case Management, Emergency Shelter, Meals, Transportation

Location: Shelter rotates among 15 churches in the tri-county area

Contact: Director or Social Worker

Hours and Days: Monday through Friday, 9:00 AM to 5:00 PM (for screening)

Facility operates 24 hrs / 7 days

Program Fees: None

Target Population: Families, Single Women with Children, Men with Children, and Single Women without Children

(Not equipped to deal with substance abuse or severe psychiatric concerns)

Languages Spoken: English, limited Spanish

Accessibility: Program has limited accessibility to persons with disabilities and limited accessibility by public transportation

Program Eligibility: Single women or one/two parent families with children or married couples without children (not equipped to serve active substance abuse or severe psychiatric concerns).

Intake Procedure: Initial phone screening followed by an interview (in person) with a social worker.

Program Description: Emergency Shelters - case management, short-term housing assistance provided for a specified period of time (normally one to three months). Clients have their own private

sleeping area and occasionally single women may need to share a sleeping area. All other areas (kitchen, dining, and bathrooms) are communal. Social services and meals are provided.

FLYNN CHRISTIAN FELLOWSHIP HOUSES OF NEW JERSEY (FFNJ)

Telephone: (908) 351-2265
Fax#: (908) 351-5042

1089-1091 East Jersey Street, Elizabeth, NJ 07201-2503

Office Hours: 6:00 AM - 6:00 PM

Days of Operation: Monday through Friday

Area Served: Union County

Website: <http://www.flynnhousenj.org>

Email: flynnfellowship@yahoo.com

Program: Information & Referral, Transitional housing. Note: No religious affiliation

Contact: Executive Director or General Manager

Hours and Days: Monday through Friday, 24 hours a day

Program Fees: \$130.00 application fee needed two weeks in advance plus two weeks rent

Target Population: Detoxified males (prior to entry) who may be persons with disabilities, HIV/AIDS, Immigrants, Single Adults, Substance Abusers, Teens, and Veterans

Languages Spoken: English, Spanish

Accessibility: Program has limited accessibility to persons with disabilities but is accessible by public transportation

Program Description: Transitional Housing: Maximum stay for clients is up to two years. Supportive services to promote self-sufficiency (life skills) and assistance to obtain permanent housing are offered. Some transitional housing units are dormitory style. Others are semi-private rooms. Residents share common kitchens and dining areas. Some people move from emergency shelters to transitional housing before moving onto permanent housing.

GREATER PLAINFIELD HABITAT FOR HUMANITY, INC. (GPHFHI)

Telephone: (908) 769-5292
Fax #: (908) 769-1310

2 Randolph Road, Plainfield, NJ 07060

Office Hours: 10:00 AM - 1:00 PM

Days of Operation: Monday through Friday

Areas Served: Plainfield and bordering towns

Website: <http://www.gphabitat.org>

Email: GPHabitat@verizon.net

Program: Permanent Housing

Contact: Family Selection Committee

Program Fees: None except "sweat equity"

Target Population: Working Families: Disabled, Single-Parent Families, Veterans, Immigrants

Language Spoken: English

Accessibility: Program is accessible to persons with disabilities and by public transportation

Program Description: Rehabilitate old houses and build new houses. Long-term, interest free mortgages for families who are not able to get a conventional mortgage.

HFH GREATER ELIZABETH AREA, INC. (HFHGEAI)

Telephone: (908) 351-6767

P.O Box 215, Garwood, NJ 07027-0215

Habitat for Humanity International: (800) 422-4828

Area Served: Union County (except for Plainfield)

Website: <http://www.gphabitat.org/>

Email: gussimpson@optonline.net

Program: Permanent Housing

Contact: Family Selection Committee

Program Fees: None except "sweat equity" (minimum of 400 hours)

Target Population: Low-income families selected on the basis of need, willingness to partner to build homes, and the ability to repay the mortgage, along with other debts and living expenses

Language Spoken: English

Program Description: Long-term, interest free mortgages for families who are not able to get a conventional mortgage. HFH Greater Elizabeth Area, Inc. is a locally run affiliate of Habitat for Humanity International, a nonprofit, ecumenical Christian housing organization. By

going to the website you can review the pre-application instruction letter, and, if you meet the eligibility requirements, you may download the application.

HIV Counseling, Testing and Referral Services (CTS)

Telephone: (908) 994-7300

654 East Jersey Street – 1st Floor Plaza Bldg. – Suite 161, Elizabeth, NJ 07206 Fax #: (908) 994-7301

Office Hours: 8:30 AM-5:00 PM Monday, Tuesday, Thursday and Friday; Wednesday 8:30 AM – 7:00 PM

Daily at 225 Williamson Street (Trinitas Regional Emergency Room) Monday 11:00 AM – 7:00 PM; Tuesday through Sunday 9:30 AM – 5:30 pm

Area Served: Union County

Website: <http://www.trinitasRMC.org/>

Program: HIV Counseling and Testing

Locations: Same as above plus Satellite Site Testing

Contact: Project Supervisor

Program Fees: None

Target Population: Individuals 13 years and older engaging in behaviors that are at risk for HIV infection

Languages Spoken: English, Spanish, and other languages through an interpreter

Accessibility: Program is accessible to persons with disabilities and by public transportation

Program Description: HIV Counseling, Testing and Referral Services provided to assist individuals in determining whether they are infected with HIV. CTS offers free Rapid HIV Antibody Testing; pre and post test counseling sessions; referral services addressing medical, psychosocial, housing, pastoral, and entitlements; partner notification; and other needs as well.

HOMEFIRST, INC. (HFT)

Telephone: Main (908) 753-4001 Ext. 13

905 Watchung Avenue, Plainfield, NJ 07060

Fax #: (908) 756-1125

Administrative Office: 1009 Park Ave., Plainfield, NJ 07060

Mailing: P.O. Box 569, Plainfield, NJ 07061

Office Hours: 9:00 AM - 5:00 PM

Days of Operation: Monday through Friday

Areas Served: Union County (will accept referrals from other counties)

Website: <http://www.homefirstinc.org/>

Program: Case Management, Emergency Shelter, Supportive Housing, Permanent Housing, Rent/Mortgage/Security Assistance, Transitional Housing, Transportation, Utility Assistance

Contact: Director of Emergency Assistance

Program Fees: None

Program Eligibility: Homeless single females; families, couples, (no single males in the shelter). All individuals who are eligible for Ryan White Services (HIV/AIDS).

Target Population: Families, Persons affected by HIV/AIDS

Languages Spoken: English, Spanish

Accessibility: Program is accessible by public transportation

Program Description: Emergency Assistance: (908) 753-4001 Ext. 16 for food/mortgage/rent/security and utility.

Emergency Shelters: (908) 753-4002 Ext. 11 - Short-term housing assistance provided for a specified period of time (normally one to three months). Usually families have their own bedroom. Single persons may have to share a bedroom with other singles. All other areas (kitchen, dining, and bathrooms) are communal. Social services and meals are provided.

Permanent Housing: (908) 755-2054 - Homefirst owns and operates housing units for low-income individuals/families. Rent and utility assistance for individuals/families is provided to help maintain permanent housing.

Supportive Housing: (908) 755-2054 - Homefirst provides rent assistance to individuals/families with HIV/AIDS in Union County as part of the supportive housing

program. Homefirst also owns and operates housing units for individuals/families who are homeless with disabilities.

Transitional Housing: (908) 753-4002 Ext. 11 - Maximum stay for clients is up to two years. Supportive services to promote self-sufficiency (life skills) and assistance to obtain permanent housing are offered. The program provides scattered site units for families. Some people move from emergency shelters to transitional housing before moving onto permanent housing.

This agency also provides:

- Case Management
- Rent/Mortgage/ Security vouchers
- Utility vouchers

Please refer to the Service Category Definitions page for more detail – page# ii

HOME SHARING, INC. (HS)

Telephone: (908) 526-4663

120 Finderne Ave. - Room 260, Bridgewater, NJ 08807

Office Hours: 9:00 AM - 5:00 PM Monday – Thursday, 9:00 AM – 4:00 PM Friday

Days of Operation: Monday through Friday

Areas Served: Hunterdon, Middlesex, Morris and Union Counties

Website: <http://www.homesharing.org/>

Email: HomeSharing@verizon.net

Program: Counseling Services, Information & Referral

Program Fees: None

Target Population: Elderly, physically disabled, single adults, single parents, working poor, students over the age of 18, residents in transition (for example, widowed or divorced men and women) in need of affordable housing

Language Spoken: English

Accessibility: Accessible to people with disabilities and by public transportation

Program Eligibility: Providers must live in the above mentioned counties with a suitable house or apartment with a separate bedroom. Seekers may come from anywhere in the country who are trying to move into this four county service area. Both providers and seekers must be independent enough to meet their own basic needs.

Program Description: To start the HomeShare process, the client completes a short application which requests the names of three people who can be contacted as character references. After the references have been interviewed, the applicant meets with the social worker to discuss their housing needs in detail. Seekers meet with the social worker in the agency office. Providers are interviewed in their homes so the prospective accommodation can be inspected. Based on the clients' preferences and requirements, they are referred to suitable clients. Providers decide if, when and where to meet the seeker. HomeSharing does not "place" people in homes. Screened applicants decide for themselves if the match is acceptable and desirable. Occasionally a provider is looking for someone to live in their home under a "service arrangement." In that situation, the seeker's rent may be reduced (or free) in exchange for help with household chores or services (for example, cooking, cleaning, shopping, yard work, etc.). In such cases the HomeSharing social worker helps both provider and seeker negotiate and document an agreement which details the work-for-rent arrangement.

This agency also provides: assistance in locating and utilizing resources such as the Food Bank, low cost medical care, and other support services.

HYACINTH AIDS FOUNDATION (HAF)

Telephone: (908) 755-0021

Fax#: (908) 322-1596

Hotline: (800) 433-0254

25 Craig Place, North Plainfield, NJ 07060

Office Hours: 9:00 AM – 5:00 PM

Days of Operation: Monday through Friday

Area Served: Statewide

Website: <http://www.hyacinth.org/hyacinth/home/index.jsp>

Email: info@hyacinth.org

Program: Care and Treatment Support, Hotline, Legal Client Advocacy, Pastoral Care, Prevention Services, Wellness Groups,
Location: Main office at: 317 George Street – Suite 203, New Brunswick, NJ 08901; Other offices in Jersey City, Newark, North Plainfield (908) 755-0021, Paterson and Trenton plus a mobile van
Telephone: Same as above and for the Main office in New Brunswick (732) 246-0204
Contact: Coordinator
Program Fees: None
Target Population: People with HIV/AIDS
Languages Spoken: English
Accessibility: Program is accessible to persons with disabilities and by public transportation

Program Description: Care and Treatment Support: Individual and Group treatment education; access to care assistance; adherence support; information on basic facts of HIV/AIDS disease; risk behavior; transmission; prevention; and treatment, as well as Hyacinth and other HIV-related services.

Legal client advocacy: Consumer (Creditor/Debtor) issues; Discrimination & Confidentiality issues; Government entitlements; Government and Private Health Insurance issues; Guardianship; Immigration; Legal documents; and Social Security and SSI Disability assistance.

Pastoral Care: Support groups; One-on-One counseling; interfaith collaborations for AIDS ministries; crisis intervention; and referrals for individuals in need of spiritual support.

Project POW! (*Prevention Outreach Works*) for those at risk and those living with HIV - Preventive Services: Health education/risk reduction; Individual risk reduction and support; Counseling; and testing.

The Wellness Community at Hyacinth: Social and emotional support groups; Complimentary and alternative care workshops.

JEFFERSON PARK MINISTRIES (JPM)

213 Jefferson Ave. / P.O. Box 163, Elizabeth, NJ 07201

Office Hours: **9:00 AM - 5:00 PM, Monday through Thursday**
9:00 AM - 3:00 PM, Friday

Days of Operation: **Monday through Friday**

Area Served: **Union County**

Website: <http://www.jeffersonparkministries.org/>

Email: jpm@jeffersonparkministries.org

Languages Spoken: Haitian Creole, English, French, (and Spanish by arrangement)

Accessibility: Program is accessible to persons with disabilities and by public transportation

Program: Food Pantry/Clothing Distribution

Location: 477 Madison Avenue, Elizabeth, NJ 07201

Telephone: (908) 469-1519 Fax: (908) 469-1520

Contact: Coordinator

Hours and Days: Every 2nd & 4th Thursday, 10:00 AM - 12:00 PM, and 4:00 PM - 6:00 PM

Program Fees: None

Target Population: All in need

Program Description: Food Pantry/Clothing Distribution is provided to persons and families in need to assist in meeting basic nutritional/clothing needs in an emergency situation.

Program: Rent Assistance / Utilities (One-Time Payment Only)

Location: 213 Jefferson Ave., Elizabeth, NJ 07201

Hours and Days: Monday through Thursday; 9:00 AM - 5:00 PM, Friday; 9:00 AM - 3:00 PM

Telephone: (908) 469-9508

Contact: Social Worker

Telephone: (908) 469-9508

Fax #: (908) 629-1116

Program Fees: None
Target Population: Elderly, Families, Immigrants, Persons with Disabilities, Single Adults

Program: Document Translation, Immigration & Naturalization, Information & Referral
Location: 213 Jefferson Ave., Elizabeth, NJ 07201
Hours and Days: Monday through Thursday, 9:00 AM - 5:00 PM
Telephone: (908) 469-9508; Fax #: (908) 469-9509;
Program Fees: Fees for Services
Contact: Coordinator
Target Population: Elderly, Families, Immigrants, Persons with Disabilities, Single Adults
Program Description: Immigration & Naturalization Assistance assists immigrants and their families in navigating through this process. Staff works with clients to prepare naturalization examinations, translate documents, and complete the necessary paperwork for registration and naturalization. Interpretation/Translation Services translates documents in English for individuals of Haitian ancestry in need of services to maintain living in the community.

Program: After School Programs, Summer Programs, Health Services, Leaders-In-Training
Location: 477 Madison Avenue, Elizabeth, NJ 07201
Hours and Days: Monday through Friday, 3:00 PM - 6:00 PM - After School Only
Location: School No.6, 1071 Julia Street, Elizabeth, NJ
Hours and Days: Monday through Thursday, 3:00 PM - 8:00 PM - After School Only
Telephone: (908) 469-9508; Fax #: (908) 469-9503;
Contact: Coordinator, and/or Administrative Assistant
Program Fees: After School: \$35 & \$55 per week or Community Coordinated Child Care (4C's) Referral
Summer Program: \$75 per week
Target Population: Children (before & after care), Teens
Description: Full Daycare Program is available for working families in need of affordable daycare for their children. Hours are: Monday through Friday, 6:30 AM - 6:00 PM. This program features developmentally appropriate theme-based learning activities in a caring atmosphere.

The After School Program is available for students (ages 5-12) to improve their academic and social skills. Each student is a participant in the Homework Assistance Program, and is encouraged to participate in community services, Rutgers Co-op Nutrition classes, music, computer, Girls & Boy Scouts, karate, dance, choir and soccer. (Contact office for further information)

NJ Family Care Registration: JPM is an approved application site for NJ families seeking medical insurance for themselves and their children. Application information is available onsite and is presented to local faith-based/grassroots/parent organizations within the community.

JPM Leaders-In-Training Program aims to teach adolescents and teens basic economic skills by exposing them to the working world. This program offers youth adventure-based courses structured to encourage growth and discovery.

This agency also provides Foster Grandparents program and:

➤ Information & Referral

Please refer to the Service Category Definitions page for more detail – page# ii

JEWISH FAMILY SERVICE OF CENTRAL NEW JERSEY (JFSCNJ)

655 Westfield Avenue, Elizabeth, NJ 07208

Office Hours:

9:00 AM - 9:00 PM Monday and Tuesday, 9:00 AM – 5 PM Wednesday and Thursday and 9:00 AM - 4:00 PM Friday (Please note that some services are only available during limited hours.)

Days of Operation:

Monday through Friday

Areas Served:

Union County and parts of Somerset County

Website:

<http://www.jfscentralnj.com/>

Telephone: (908) 352-8375

Fax #: (908) 352-8858

Email: info@JFSCentralNJ.org
Program: Licensed as an outpatient mental health agency, adoption agency, childcare provider, and homecare agency. This agency also provides: Advocacy/Outreach, Assessment, Case Management, Food Assistance, Information & Referral
Please refer to the Service Category Definitions page for more detail – page# iii
Contact: Intake Coordinator
Program Fees: Sliding Fee Scale
Target Population: Elderly, Families, HIV/AIDS, Immigrants, Persons with Disabilities, Persons Affected by Domestic Violence, Pregnant Women, Runaway Youth, Single Adults, Substance Abusers, Teens, Veterans
Languages Spoken: English, Russian, Spanish
Accessibility: Program is accessible to persons with disabilities and by public transportation
Other Location: Counseling services are at 1093 Raritan Road, Clark, NJ

MT. CARMEL GUILD BEHAVIORAL HEALTH (MCGBH)

Telephone: (908) 497-3968

108 Alden Street, Cranford, NJ 07016

Fax: (908) 272-9268

Office Hours: **9:00 AM – 5:00 PM - Monday through Friday**

Programs: Outpatient Services: Monday through Thursday 9:00 AM – 8:00 PM
Friday 9:00 AM – 5:00 PM

Partial Care Program: Monday through Friday 9:00 AM – 3:15 PM

Location: 108 Alden Street, Cranford, NJ 07016

Contact: Access Coordinator (908) 497-3925

Program Fees: Medicaid, Medicare, Third Party Insurance, Self-Pay

Target Population: Adults, Children, Families

Language Spoken: English

Accessibility: Program is accessible to persons with disabilities and by public transportation

Program Description: Partial Care: Structured work activity units every morning; varied groups in the afternoon in order to help clients reduce symptoms and develop better coping; and interpersonal social skills. All activities focus on wellness and recovery.

Outpatient Services: Individual services for adults, adolescents, children and families, who experience difficulties coping with life's stresses; suffer from a mental and/or emotional illness; require psychiatric evaluation; and medication monitoring. These services include individual therapy, group therapy for adults, medication monitoring and case management.

MT. CARMEL GUILD BEHAVIORAL HEALTH/Integrated Case Management Services MCGBH-ICMS

Telephone: (908) 497-3927

505 South Ave. East, Cranford, NJ 07016

Fax #: (908) 497-3989

Office Hours: **9:00 AM - 9:00 PM, Monday, Tuesday, Wednesday & Thursday; 9:00 AM - 5:00 PM Friday**

Days of Operation: **24/7 on call**

Area Served: **Union County**

Program: Integrated Case Management Services – Mount Carmel Guild

Contact: Program Manager (908) 497-3923

Program Fees: Medicaid; All other service is grant funded with no fee

Target Population: Adults, severely and persistently mentally ill

Languages Spoken: English, Spanish

Accessibility: Program is accessible to persons with disabilities and by public transportation

Program Description: Case Management which includes service linkage, coordination, advocacy and support. Clients are referred by state, county, and local psychiatric inpatient units, as well as community referrals.

NEIGHBORHOOD HEALTH SERVICES CORP. (NHSC)

Telephone: (908) 753-6401

1700-1758 Myrtle Avenue, Plainfield, NJ 07063

Fax #: (908) 226-7014

Office Hours: **Monday, Wednesday, Friday 8:00 AM - 5:00 PM**
Tuesday and Thursday 8:00 AM – 8:00 PM
Saturday 9:00 AM – 1:00 PM

Days of Operation: Monday through Saturday
Areas Served: Union, Sussex, and Warren Counties
Website: <http://www.phcmednet.org/>
Program: Adult Medicine, Dentistry, Gynecology, Obstetrics, Pediatrics, and Ancillary services. Services include comprehensive, accessible primary medical care to improve the health of residents as well as reduce the inappropriate utilization of hospital emergency departments. Specialty services include Advocacy/Outreach, Case Management and Counseling, HIV/AIDS treatment and therapy, Nutritional counseling, Podiatry care, Vision care
Locations: Additional locations at:
 Neighborhood Health Center Elizabeth, 250-54 Second St., Elizabeth, NJ 07206 (908) 355-4459. Dental hours include Saturdays 9:00 AM – 12:00 Noon
 Neighborhood Health Center Cardinal at Plainfield High School, 950 Park Ave., and (908) 753-9400 – serves adolescents
 Neighborhood Health Center The Healthy Place at Washington Elementary School, 427 Darrow Ave., Plainfield (908) 731-4228 – a satellite pediatric department serving this and other feeder schools
 Neighborhood Health Center Newton, 238 Spring Street, Newton, NJ 07850 (973) 383-7001
 Neighborhood Health Center Phillipsburg, 433 Main Street, Phillipsburg, NJ 08865 (908) 454-4600
Contact: Ancillary Services Supervisor or HIV/AIDS Coordinator
Program Fees: None
Target Population: People with HIV/AIDS, Pregnant Women, Single Adults, Substance Abusers, Teens and children
Languages Spoken: English, Spanish
Accessibility: Program is accessible to people with disabilities and by public transportation
Program Description: Advocacy/Outreach provides culturally and language appropriate health assessments, education, and health care instruction. Appropriate diagnostic tests are initiated either onsite or through referral. Interventions such as immunizations, provision of prescriptions, health education and referrals are initiated, followed-up, and subsequently evaluated for compliance and effectiveness.

Intake operations include reception and preliminary data collection of all clients prior to seeing a provider. The medical provider conducts either a complete assessment or a focused physical assessment depending on the client's needs.

PLAINFIELD ACTION SERVICES (PAS)

Telephone: (908) 753-3519

City Hall Annex, 510 Watchung Avenue, Plainfield, NJ 07060

Fax #: (908) 753-3540

Office Hours: 9:00 AM - 5:00 PM

Days of Operation: Monday through Friday

Area Served: City of Plainfield

Program: Advocacy/Outreach, Food Assistance, Information & Referral, Rent assistance (with eviction notice and if funding is available)

Please refer to the Service Category Definitions page for more detail – page# ii

Program Fees: None

Target Population: Families, Single Adults, Teens

Languages Spoken: English, Spanish

Accessibility: Program is accessible to persons with disabilities and by public transportation

PLAINFIELD AREA YMCA (PYMCA)

Telephone: (908) 756-6060

518 Watchung Avenue, Plainfield, NJ 07060

24HR Hot Line (908) 756-6061

Office Hours: 9:00 AM - 5:00 PM

Fax #: (908) 769-5341

Days of Operation: Monday through Friday

Areas Served: Plainfield Area and Union County

Website: <http://www.plainfieldy.org/>

Program: Emergency Shelter, Permanent Housing (Single Men Only), 24 Hour Response System

Telephone: Same as above. Call (908) 756-6061 after 5:00 PM

Contact: Program Director
Hours and Days: 24 hours a day, 7 days a week
Program Fees: Depends on eligibility status
Target Population: Families, Single Adults
Languages Spoken: English, bilingual staff available
Accessibility: Facility has an outside wheelchair lift, and is accessible by public transportation
Program Description: Emergency Shelters - Short-term housing assistance provided for a specified period of time (normally one to three months). Dining area and bathrooms are communal; sleeping arrangements are dormitory style. Concrete social services and one hot meal per day are provided to families/individuals.
 The Plainfield Area YMCA provides a 24-hour Homeless Hotline, which is a professional telephone response system, to link homeless individuals and families seeking emergency shelter and to make appropriate referrals for emergency shelter placements. In addition to weekday referrals, the agency will accept evening and weekend calls (including collect calls from homeless persons in need).

PROCEED, INC. (PRO)

1126 Dickinson Street, Elizabeth, NJ 07201

Telephone: (908) 351-7727

Fax #: (908) 353-5185

Office Hours: **8:30 AM- 8:00 PM for counseling; 8:30 AM – 4:30 PM for other programs**

Days of Operation: **Monday, through Friday**

Area Served: **Union County**

Website: <http://www.proceedinc.com/>

Program: Advocacy/Outreach, Case Management, Food Assistance, Health and Special Services, Information/Referral, Rent/Relocation/Security Assistance, Transitional Housing, Utilities Assistance, and Differential Response

Contact: Multi-Services Director

Hours and Days: Monday through Friday, 8:30 AM-4:30 PM

Program Fees: None – but must meet program eligibility

Target Population: Single Adults, Families, Elderly, Immigrants, Mentally Ill, Persons Affected by Domestic Violence, Persons with Disabilities, Pregnant Women, HIV/AIDS, Substance Abusers, Veterans

Languages Spoken: English, Spanish

Accessibility: Program is accessible to persons with disabilities and by public transportation

Program Eligibility: Must be working, low-income and must show reasons for falling behind in paying rent/utilities. Must be a Union County resident and have a legal status in this country.

Program Description: *Homeless Prevention—and Rapid Re-Housing Program:* Short-term / medium-term rent assistance, utility assistance, hotel/motel placement, housing search & placement, and credit repair. These services are provided in the location at 1122 E. Grand Street, Elizabeth. Hours of operation are Monday – Friday 9:00 am – 4:00 pm & appointments available for evenings through 6/30/12. The phone number is (908) 351-7727.

Housing Opportunities for Persons with HIV/AIDS, (HOPWA) provides low-income persons with HIV/AIDS and their families who live in Union County with Tenant-Based and Long-Term Rent Assistance. This includes assistance for shared housing arrangements in order to maintain adequate living standards and to reduce the stressors associated with homelessness or the threat of homelessness.

Transitional Housing offers single males with HIV/AIDS (who are otherwise ambulatory) with a safe, home-like setting while more stable housing arrangements are secured. The goal of the program is to reduce the risk of homelessness to individuals with HIV/AIDS while safeguarding the physical and emotional health of clients. To this end, participants of the program are offered ancillary services such as individual counseling, mental health therapy, and advocacy, among others.

Differential Response offers parents under stress and/or at risk of committing child abuse or neglect a holistic case management and counseling services. Experienced counselors work with the entire family to work through underlying problems that could lead to child abuse and neglect in the future. The program is designed to assure

children's permanence and well-being in their own homes, promote healthy family functioning, prevent child abuse, provide linkages to community resources, and prevents the need for more intrusive child protective service interventions. A differential response intervention leaves the family with an established support system to which the family will have continued access. To qualify for services, families must voluntarily register with the New Jersey Statewide Central Registry or must be referred by DCP. If their case is classified as apt for child welfare and differential response services and if the family resides in Union County, they are considered eligible for PROCEED's Differential Response program.

This agency also provides:

- Advocacy/Outreach
- Case Management
- Food vouchers
- Information & Referral
- Rent/Security vouchers
- Utility vouchers

Please refer to the Service Category Definitions page for more detail – page# ii

RAPHAEL'S LIFE HOUSE (RLH)

Telephone: (908) 354-4750

Fax #: (908) 354-1922

231 Court Street, Elizabeth, NJ 07206

Office Hours: 9:00 AM - 5:00 PM

Days of Operation: Monday through Friday

Area Served: Statewide

Website: <http://www.raphaelslifehouse.org/>

Program: Transitional Housing

Contact: Case Manager

Hours and Days: 24 hours a day, 7 days

Program Fees: No program fee, but savings program is required.

Target Population: Pregnant and Parenting Women between the ages of 18 and 21 years old, (if parenting, must be a single child less than 1 year old)

Language Spoken: English

Accessibility: Program is accessible by public transportation

Program Description: A Mothers and Babies program is operated by Covenant House that houses 12 young women and their newborns while the new Moms learn to become good parents with the ability to support themselves and their children. Participation in social services, health education, and counseling are mandatory. Maximum stay for clients is one year.

ST. JOSEPH'S SOCIAL SERVICE CENTER (SJSSC)

Telephone: (908) 352-2989 Ext. 201 or 209

Fax #: (908) 354-1433

118 Division Street, Elizabeth, NJ 07201

Office Hours: 9:00 AM - 4:30 PM (Monday through Friday)

Days of Operation: Food Pantry – 3rd & 4th Tuesdays of each month 9:00 AM – 11:30 AM;

Soup Kitchen - Saturday 11:30 AM - 1:00 PM

Job Program - Tuesday, Wednesday, Thursday 9:00 AM – 12:00 Noon

Area Served: Union County

Website: <http://stjosephelizabeta.org/>

Email: jacintoosb@yahoo.com

Program: Food Pantry, Family and Individual Counseling, Health & Special Services, Information & Referral, Job Program, Soup Kitchen/Meals

Contact: Social Worker/Director of Job Program/Counselor

Program Fees: None

Target Population: All in Need

Languages Spoken: English, Spanish, Portuguese

Accessibility: Program is accessible to persons with disabilities and by public transportation

Program Description: Food Pantry - Food items are donated by churches and organizations throughout Union County. Food is purchased each month at the Community Food Bank in Hillside to supplement what is donated. SJSSC is part of a food pantry coalition in Elizabeth. Each food pantry takes a specific area of the city so as not to duplicate efforts.

Soup Kitchen - Hot meals are provided by several parishes from Union County. The parishioners buy, cook, and serve the meals. The soup kitchen is open to anyone in need regardless of residence.

Job Program - The applicant attends six classes after which a certificate is issued. Classes include resume writing, computer classes, interview skills, etc. Job Program staff then assists applicants in their Job Search. After a job is obtained, follow-up is done to encourage and assist in whatever way may be necessary.

This agency also provides:

- Information & Referral

Please refer to the Service Category Definitions page for more detail – page# ii

SALVATION ARMY - ELIZABETH (SA-E)

Telephone: (908) 352-2886

Fax #: (908) 352-5874

1018 East Grand Street, Elizabeth, NJ 07201 (Community Center)

Office Hours: 8:00 AM - 4:00 PM

Days of Operation: Monday through Friday

Area Served: Union County

Website: <http://www.use.salvationarmy.org/>

Program: Emergency Shelter

Location: 1018 E. Grand Street, Elizabeth, NJ 07201

Contact: Shelter Director

Hours and Days: 24 hours / 7 days

Program Fees: None (subject to welfare regulations or referrals)

Target Population: Elderly, Mentally Ill, Persons Affected by Domestic Violence, Persons Affected by HIV/AIDS, Single Adults, Substance Abusers, Veterans

Intake Procedure: One-on-one screening; Client is referred to a Case Manager for assessment.

Languages Spoken: English, Spanish

Accessibility: Program is accessible to persons with disabilities (new wing is accessible), and by public transportation

Program Description: Emergency Shelters - Short-term housing assistance provided for a specified period of time (normally one to three months). Men and women have separate sleeping quarters. Kitchen and dining areas are communal. Social Services and meals are provided.

Program: Food Pantry, Food Assistance, Soup Kitchen, Furniture Vouchers (when funding is available)

Location: 1005 East Jersey Street, Elizabeth, NJ 07201

Telephone: (908) 352-7057 Fax #: (908) 352-6046

Contact: Community Outreach Coordinator

Hours and Days: 12:00 PM - 1:00 PM, the last 10 weekdays of the month (Soup Kitchen), excluding Saturday & Sunday; Monday-Friday (Food Pantry) 9:00 AM – 11:15 AM the first 10 weekdays of the month - and by appointment

Program Fees: Free

Target Population: All in need

Languages Spoken: English, Spanish

Accessibility: Program is accessible to persons with disabilities and by public transportation

Program: Rent/Mortgage/Security Assistance, Utilities Assistance (if funds are available)

Location: 1018 East Jersey Street, Elizabeth, NJ 07201

Telephone: (908) 352-7057 Fax #: (908) 352-6046

Contact: Director / Supervisor

Program Fees: None – must meet program eligibility

This agency also provides:

- Food vouchers
- Rent/Mortgage/Security vouchers
- Utility vouchers

Please refer to the Service Category Definitions page for more detail – page# ii

SALVATION ARMY - PLAINFIELD (SA-P)**756-2595****Telephone: (908)****615 Watchung Avenue, Plainfield, NJ 07060****Fax #: (908) 756-7569****Mail: P.O. Box 1221, Plainfield, NJ 07060****Office Hours: 9:00-4:00 AM (Closed 11:30-1:30) Monday through Friday****Days of Operation: Monday through Friday****Areas Served: Plainfield, Scotch Plains, Fanwood****Website: http://www.use.salvationarmy.org/use/www_use.nsf****Program:** Assessment, Case Management, Food Assistance, Information & Referral, Intake, Rent/Security and Utilities Assistance, Soup Kitchen/Meals (12:00 PM - 12:45 PM)**Contact:** Office Manager**Program Fees:** None (donations accepted)**Target Population:** Elderly, Families, HIV/AIDS, Immigrants, Mentally Ill, Persons with Disabilities, Persons Affected by Domestic Violence, Pregnant Women, Runaway Youth, Single Adults, Substance Abusers, Teens, Veterans.**Language Spoken:** English**Accessibility:** Program is accessible to persons with disabilities and by public transportation**Intake Procedure:** Must have picture ID, Social Security number for themselves and Social Security number or birth certificates for children in their care.**Program Description:** Food baskets are provided to eligible persons/families to assist in meeting basic nutritional needs in an emergency situation.

This agency also provides:

- Assessment
- Case Management
- Information & Referral
- Intake

*Please refer to the Service Category Definitions page for more detail – page# ii***SERV CENTERS OF NEW JERSEY, INC. (SCNJI)****Telephone: 24HR Hotline 1-800-987-7378****Main (908) 276-0490 Fax #: (908) 276-0560****130 Dermody Street, Cranford, NJ 07016****Office Hours: 9:00 AM - 5:00 PM****Days of Operation: Monday through Friday****Area Served: Union County****Website: <http://www.servbhs.net/>****Program:** Residential Program**Contact:** Clinical Coordinator**Program Fees:** Contact Office**Target Population:** Mentally Ill, Single Adults, Substance Abusers (if they have a mental illness)**Languages Spoken:** Spanish/English**Accessibility:** Limited accessibility to persons with disabilities and by public transportation**Program Eligibility:** Primary diagnosis of a mental illness**Program Description:** Supervised Apartment Program: available to adults in the process of extending their psychiatric rehabilitation. Psychiatric Group Home: Available for adults with chronic psychiatric disorders; a highly structured therapeutic milieu.**STREETLIGHT MISSION (SM)****Main (908) 820-8324****Fax #: (908) 820-8327****1181 East Broad Street, Elizabeth, NJ 07201****Office Hours: Monday, Tuesday, Thursday: 10:00 AM - 2:00 PM
Saturday: 11:00 AM - 2:00 PM (Food Pantry Only),****Days of Operation: Monday, Tuesday, Thursday, Saturday****Area Served: New Jersey Metropolitan area****Website: <http://www.streetlightmission.org/>****Email: info@streetlightmission.org****Program:** Advocacy/Outreach, Assessment, Clothing, Detox/Substance Abuse Rehabilitation Treatment, Employment Assistance, Food Pantry, Information & Referral, Intake, Referrals and Support Services, Tutoring at-risk Children**Contact:** StreetLight Mission Coordinator

Program Fees: None

Target Population: Elderly, Families, HIV/AIDS, Immigrants, Mentally Ill, Persons with Disabilities, Persons Affected by Domestic Violence, Pregnant Women, Substance Abusers, Runaway Youth, Single Adults, Teens, Veterans (Food Pantry – Open to all in need)

Languages Spoken: English, Spanish (usually available)

Accessibility: Program is accessible to persons with disabilities and by public transportation

Program Description: Food Pantry assistance is provided to eligible persons/families to assist in meeting basic nutritional needs. Food pantry assistance is available to each household once or twice every thirty days. Emergency referrals are accepted. Please call agency for document requirements.

This agency also provides:

- Advocacy/Outreach
- Assessment
- Information & Referral
- Intake

Please refer to the Service Category Definitions page for more detail – page# ii

UNION COUNTY DIVISION on AGING & Disability Resource Connection (UCDoA)

Telephone: (908) 527-4870 / 4872
Toll Free: (888) 280-8226

Department of Human Services
10 Elizabethtown Plaza – 4th Floor, Elizabeth, NJ 07207

Office Hours: 8:00 AM – 4:30 PM

Days of Operation: Monday through Friday

Area Served: Union County

Website: www.ucnj.org/aging

Email: uchsaging@ucnj.org

Program: Advocacy, Case Management, Information and Assistance

Program Fees: None

Target Population: Seniors 60+ and Caregivers of 60+ years of age

Languages Spoken: English, Filipino, Italian and Spanish

Accessibility: Program is accessible to persons with disabilities and by public transportation

Program Description: *Please refer to the Service Category Definitions page for more detail – page# iii*
 Assist seniors with application process for federal and state programs. Walk-ins are welcome. See Appendix D for nutrition program sites.

UNION COUNTY PSYCHIATRIC CLINIC BEHAVIORAL HEALTHCARE, INC. (UCPC)

117-119 Roosevelt Avenue, Plainfield, NJ 07060

Telephone: (908) 756-6870

Fax #: (908) 756-5566

Office Hours: Monday to Thursday 9:00 AM to 8:30 PM and Friday 9:00 AM – 5:00 PM

Days of Operation: Monday through Friday

Areas Served: Union County, North Plainfield

Website: <http://www.ucpcbhc.org/>

Program: Mental Health and Addictions Services (Co-occurring Disorders)

Program Fees: Medicaid, Medicare, Some third party insurance; Sliding Fee Scale; (No client refused because of *inability* to pay).

Target Population: Mentally ill – Individuals with mental health and addiction problems; Individuals experiencing life stressors, depression, anxiety, self-esteem and relationship problems.

Languages Spoken: English, (and limited capacity for other languages)

Accessibility: Program is accessible to persons with disabilities and by public transportation

Locations: Main Office: 117-119 Roosevelt Ave., Plainfield, NJ 07060

Satellite Office: 2204 Morris Avenue, Room 206, Union, NJ 07083

Telephone: For Satellite office (908) 686-0560 FAX: (908) 686-5040

Office Hours: Monday, Thursday, Friday 9:00 AM – 5:00 PM

Tuesday 1:00 PM - 9:00 PM – (Closed Wednesdays)

Program Description: Case Management; Clozaril Medication program; Individual / family counseling for children and adults; Injection services; Intoxicated Driver Resource Center (IDRC) services; MICA (Mentally Ill Chemical Abuse co-occurring disorders) program; Partial Care program; Psychiatric evaluation and medication management; Specialized recreational program for chronically mentally ill adults (Steppin' Out).

UNITED FAMILY & CHILDREN'S SOCIETY (UFCS)

Telephone: (908) 755-4848

305 West Seventh Street, Plainfield, NJ 07060

Fax #: (908) 755-3655

Office Hours: 9:00 AM to 5:00 PM Monday & Friday
9:00 AM to 9:00 PM Tuesday, Wednesday, Thursday

Days of Operation: Monday through Friday

Areas Served: Union, Somerset, and Middlesex Counties

Website: <http://www.unitedfamily.org/>

Program: Individual & Family Counseling

Contact: Intake Worker

Program Fees: Medicaid, Sliding scale

Target Population: Families, Persons Affected by Domestic Violence, Teens

Language Spoken: English

Accessibility: Program is accessible to persons with disabilities and by public transportation

Program Description: Individual & Family Counseling addresses any problems that may have contributed to homelessness and/or counseling for problems coping with homelessness and planning for the future.

UNITED WAY OF GREATER UNION COUNTY (UWGUC)

Telephone: (908)

353-7171

33 West Grand Street, Elizabeth, NJ 07202-1499

Fax #: (908) 353-6310

Office Hours: 9:00 AM - 5:00 PM

24 Hr. Hotline: 2-1-1

Days of Operation: Monday through Friday

Area Served: Union County

Website: <http://www.uwguc.org/>

Program: Information & Referral – Works Directly with the 2-1-1 program which is free, confidential, multilingual, and TTY accessible from any landline or cell phone
Please refer to the Service Category Definitions page for more detail – page# ii

Hours and Days: 24 hours, 7 days a week (for 2-1-1 program)

Program Fees: None

Target Population: Elderly, Families, HIV/AIDS, Immigrants, Infants and Toddlers, Mentally Ill, Persons with Disabilities, Persons Affected by Domestic Violence, Pregnant Women, Runaway Youth, Single Adults, Substance Abusers, Teens, Veterans, Unemployed

Languages spoken: English, Spanish, Portuguese (and others with the 2-1-1 phone linkage)

Accessibility: Program is accessible to persons with disabilities and by public transportation

Program Description: 2-1-1 Call specialists provide comprehensive information and referral services about a variety of issues including:

- Basic Human Needs Resource – food banks, clothing closets, etc.
- Support for Seniors and Persons with Disabilities – adult day care, Meals on Wheels, respite care, home health care, transportation, homemaker services, etc.
- Support for Children, Youth and Families – childcare, after school programs, NJ Family Care (health insurance), family resource centers, summer camps and recreation programs, mentoring, tutoring, protective services, etc.
- Physical and Mental Health Resources – health insurance programs, Medicaid and Medicare, maternal health, Children's Health Insurance Program, medical information lines, crisis intervention services, support groups, counseling, drug and alcohol intervention and rehabilitation, etc.
- Employment Supports – financial assistance, job training, transportation assistance, education programs, etc.

URBAN LEAGUE OF UNION COUNTY, INC. (UL)**Telephone: (908) 351-7200****288 North Broad Street, 2nd Floor, Elizabeth, NJ 07208****Fax #: (908) 527-9881****Office Hours:**

Monday, Tuesday, Thursday 9:00 AM to 12:30 PM (last walk-in taken at 12:00 Noon) and 1:30 to 5:00 PM (last walk-in taken at 4:00 PM)
Wednesday, Friday 9:00 AM to 12:30 PM (last walk-in taken at 12:00 Noon) and 1:30 to 5:00 PM appointments only (no walk-ins taken)
Extended hours Tuesday & Thursday evenings and Saturday mornings, but all hours are by appointment only

Area Served:**Union County****Website:**<http://www.nul.org/content/urban-league-union-city>**Program:**

Assessment, Case Management, Employment, Fair Housing, Foreclosure, Financial Literacy, First Time Home Buyer Program, Housing Counseling, Information & Referral, Intake, Rent/Mortgage/Security Assistance, Utilities Assistance

Contact:

Housing Counselor

Program Fees:

None

Target Population:

Families, Single Adults

Languages Spoken:

English, Spanish

Accessibility:

Program is accessible to persons with disabilities and by public transportation

Program Description:

Case Management - Contact is maintained after assistance to determine that the client is continuing to progress as well as possible.

Employment - Seeks to recruit, screen, refer, and place individuals that need employment and/or training programs. Focus is on the under-employed and unemployed individuals.

Housing Counseling - Counseling in the areas of budgeting and credit; pre-purchase, post-purchase counseling; reverse mortgage counseling; assistance with forbearance agreements, assignments, and mortgage default and delinquency counseling are offered.

Affordable Care Act Navigator - staff certified to:

- conduct public education and outreach activities;
- assist consumers with program eligibility and enrollment;
- provide printed informational material; and
- provide computer access to complete online application

This agency also provides:

- Assessment
- Case Management
- Information & Referral & Intake
- Rent/Mortgage/Security vouchers
- Utilities Assistance - In some cases we can provide assistance for purchase of oil for City of Elizabeth residents only.

Please refer to the Service Category Definitions page for more detail – page# ii

VETERANS AFFAIRS COMMUNITY HEALTH PRACTICE (VA)**Telephone: (908) 994-0120****654 East Jersey Street – Suite 2A, Elizabeth, NJ 07206****Fax: (908) 994-0131****Office Hours:****8:00 AM – 4:30 PM****Days of Operation:****Monday through Friday****Area Served:****New Jersey and surrounding areas****Website:**<http://www.newjersey.va.gov/visitors/elizabeth.asp>**Program:**

Department of Veterans Affairs New Jersey Health Care System comprises two campuses and ten outpatient clinics

Location:

Same as above with Parent Facility at VA Medical Center East Orange, 385 Tremont Ave., East Orange, NJ 07018 (973)676-1000

Program Fees:

Sliding scale

Target Population:

Veterans

Languages Spoken:

English

Accessibility:

Program is accessible to persons with disabilities and by public transportation

Intake Procedure:

All appointments are scheduled prior to visit

Program Description: Community-Based Outpatient Clinic that features: primary care services; nutrition and social work; Behavioral Health services including individual, group and family counseling; Laboratory; Specialty Care referrals to the East Orange and Lyons Campuses. All appointments are scheduled prior to visit. Free parking.

VOLUNTEERS OF AMERICA (VOA)

Telephone: (732) 827-2444

Fax #: (732) 827-2440

205 W. Milton Avenue, Rahway, NJ 07065

Office Hours: 9:00 AM - 5:00 PM, Monday through Friday

Days of Operation: Monday through Friday

Area Served: Union County

Website: <http://www.voa-gny.org>

Program: Permanent Housing, Permanent Supportive Housing

Location: Scattered sites

Telephone: (908) 282-1329 (for Permanent Supportive Housing)

Program Fees: Rent pro-rated based on income

Target Population: Consumers of mental health services who meet low income guidelines

Languages Spoken: English/Spanish

Accessibility: Program is accessible to persons with disabilities and by public transportation

Intake Procedure: Must meet income guidelines. Referrals made by the service provider / organization or self-referrals

Program Description: Comprehensive supportive housing services to consumers of mental health services. Rents are subsidized through state or federal programs, and staff provides onsite support and linkages to community-based wellness and recovery-oriented service.

YMCA OF EASTERN UNION COUNTY (YMCA/EUC)

Telephone: (908) 355-9622

Fax #: (908) 355-3572

135 Madison Avenue, Elizabeth, NJ 07201

Office Hours: 9:00 AM - 8:00 PM, Monday through Friday

Days of Operation: 7 Days / Week

Area Served: Union County

Website: <http://www.ymcaeuc.org/>

Program: Assessment, Case Management, Emergency Shelter, Information & Referral, Intake, Residential Services, Supportive Housing (single men & women and families), Substance Abuse Referral, Transitional Housing

Hours and Days: Emergency Shelter/Transitional Housing 8:00 AM - 5:30 PM, 7 days/week

Program Fees: Depends on eligibility status

Target Population: Families, Persons with Disabilities, Persons Affected by Domestic Violence, Pregnant Women, Single Adults, Substance Abusers, and Veterans

Languages Spoken: English, Spanish

Accessibility: Program is accessible to persons with disabilities and by public transportation

Program Eligibility: Homeless single men and women and families with children

Program Description: Emergency Housing - Short-term housing assistance provided for a specified period of time. Families have their own bedrooms. Kitchen and dining areas are communal. Social Services are provided.

Case Management services include: counseling services, child care, employment and training assistance, conflict resolution, parenting classes, budget management, substance abuse counseling, anger management and stress therapy.

Men's Dormitory – Rental rooms/single room occupancies (SROs) are available to male residents age 18 and older. Residents have the use of laundry facilities, air conditioned lounges with cable television, restrooms and showers. The men also receive wrap-around services in: case management, social skills, employment readiness, life skills, bus cards, substance abuse counseling, budget management, and nutrition.

Supportive Housing – has two overall goals: 1.) Helping the participants increase skills and/or income. Meeting this goal will allow the participants to secure an income to live as independently as possible. 2.) Helping the participants achieve greater self-

determination. Achieving a greater sense of self-sufficiency can enable the participant to gain needed confidence to make the transition out of homelessness.

Transitional Housing – with a maximum stay for clients of up to two years. Supportive services to promote self-sufficiency (life skills) and assistance with obtaining permanent housing are offered. Transitional housing units are private apartment residences. Clients move from emergency shelter (Madison House) to transitional housing before moving onto permanent housing.

This agency also provides:

- Advocacy/Outreach
- Assessment
- Information & Referral
- Intake - Normally referrals are from the Union County Division of Social Services.

Please refer to the Service Category Definitions page for more detail – page# ii

YWCA OF CENTRAL NEW JERSEY (YWCA/CNJ)

Telephone: (908) 756-3500

Fax #: (908) 756-8909

232 East Front Street, Plainfield, NJ 07060

Office Hours: 9:00 AM - 5:00 PM

Days of Operation: Monday through Friday

Area Served: New Jersey

Website: <http://www.ywcacnj.org/>

Program: Assessment, Information & Referral, Intake

Please refer to the Service Category Definitions page for more detail – page# iii

Contact: Director

Hours and Days: Monday through Friday, 8:30 AM to 4:00 PM

Program Fees: None

Target Population: Female Headed Families; Persons Affected by Domestic Violence, Pregnant Women, Single Adult Females

Languages Spoken: English

Accessibility: Program is not accessible to persons with disabilities but is by public transportation

YWCA OF EASTERN UNION COUNTY (YWCA/EUC)

Telephone: Main (908) 355-1995

Fax #: (908) 355-2010

P.O. Box 242, Elizabeth, NJ 07201 24HR Hot Line (908) 355-4357

Office Hours: 9:00 AM - 5:00 PM

Days of Operation: Monday through Friday

Areas Served: Union County (Depending on program)

Website: <http://www.ywcaeuc.org/>

Program: Domestic Violence Hotline, Emergency Shelter (Location - Undisclosed), Legal representation, Non-residential counseling, PALS (Peace: A Learned Solution), Project – Protect, Supportive Housing

Telephone: Main office: (908) 355-1995, Hotline: (908) 355-4357

Counseling: (908) 355-1500, PALS (908)-518-9911

Contact: Case Manager

Hours and Days: 24 hours a day, 7 days a week

Program Fee: None

Target Population: Persons Affected by Domestic Violence.

Languages Spoken: English, Spanish, Urdu

Accessibility: Program is accessible to people with disabilities and by public transportation

Program Description: Emergency Shelters - Short-term housing assistance provided for a specified period of time (normally one to three months). Usually families have their own bedrooms; single persons may need to share a bedroom with other singles. All other areas (kitchen, dining, and bathrooms) are communal. Social Services and meals are provided.

Domestic Violence Hotline (908) 355-HELP: staffed 24/7 to provide information regarding emergency hospital services, referrals, crisis intervention and problem solving as well as emergency shelter admissions.

Legal Representation and Court Advocacy Program: provides services of an attorney or court advocate specialized in domestic violence to secure restraining orders, child support, spouse support, custody and/or visitation, and trial work.

Non-residential Counseling Program (908) 355-1500: provides women surviving domestic violence the opportunity to enhance their empowerment by participating in individual and group counseling, safety planning and education in the dynamics of Domestic Violence/Partner abuse. Group and individual counseling is available.

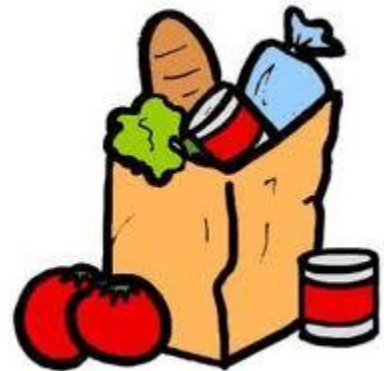
Peace: A Learned Solution (PALS) is a creative arts therapy program for children ages 4 through 12 who have been impacted by domestic violence. (908) 518-9911

Project-Protect: Women (with or without children) who are in imminent danger due to domestic violence. Programs and services include: individual and group counseling, case management, child advocacy, accompaniment, meals, child care, art classes for women & children, life skills workshops and financial planning workshops.

Supportive Housing is permanent housing for persons with disabilities who are homeless. Support staff provides services to develop job skills, savings plans and resources to live independent lives. Services include: case management, counseling and community advocacy.

This agency also provides:

- Community Education
- Domestic Violence Response Team
- DCPD/Domestic Violence Liaison



A Guide to Affordable Housing in Union County

What follows is a listing of housing built or rehabilitated under various federal and state programs. Additional sources of Affordable Housing may be available through the leased housing (Housing Authorities - Section 8) program or through programs funded by state, county, or municipal governments.

NJ DEPT. OF COMMUNITY AFFAIRS

200 W. 2nd St.
Plainfield, NJ 07060
(908)412-3700
<http://www.state.nj.us/dca/divisions/dhcr/>

NJ DEPT. OF COMMUNITY AFFAIRS

Affordable Housing - Mgt. Service
CN 806
Trenton, NJ 08625
(609) 292-9795 or 984-3380
<http://www.nj.gov/dca/dh>

CITY OF ELIZABETH

City Hall
50 Winfield Scott Plaza
Elizabeth, NJ 07207
(908) 352-8450
<http://www.elizabethnj.org>

UNION TOWNSHIP

Municipal Building
1976 Morris Ave.
Union, NJ 07083
(973) 761-0059
<http://uniontownship.com/housing.htm>

UNION COUNTY DEPT. of ECONOMIC DEVELOPMENT/Bureau of Housing

10 Elizabethtown Plaza – 2nd Floor
Elizabeth, NJ 07207
(908) 527-4200 / 4802 / 4229
<http://www.ucnj.org>

UNION COUNTY HOUSING RESOURCES

Housing Authority of the City of Elizabeth
688 Maple Avenue, Elizabeth, NJ 07202

Housing Authority of the City of Linden
1601 Dill Avenue, Linden, NJ 07036

Housing Authority of the City of Plainfield
510 E. Front Street, Plainfield, NJ 07060

Housing Authority of the City of Rahway
165 E. Grand Avenue, Rahway, NJ 07065

Housing Authority of the City of Summit
71 Summit Avenue, Summit, NJ 07091

NJ Dept. of Community Affairs – Section 8 Program
200 West 2nd Street, Plainfield, NJ 07060

HOUSING AUTHORITIES

(908) 965-2470

(908) 965-2471

(908) 298-3820

(908) 769-6335

(732) 388-3546

(908) 273-6413

(908) 412-3700

ADDITIONAL RESOURCES

NJ 2-1-1 – <http://www.nj211.org/>

NJ Housing Resource Center – <http://www.njhousing.gov/>

NJ Housing and Mortgage Finance Agency – <http://www.nj.gov/dca/hmfa/>
<https://www.njhomekeeper.com/>

NJ Department of Community Affairs, Division of Housing & Community Resources –
<http://www.nj.gov/dca/dcr/>

NJ Self-Help Clearinghouse – (800) 367-6274

NJ HELPS – <http://www.njhelps.org>

The Hope Hotline – (888) 995-HOPE

NJ Judiciary Foreclosure Mediation Program – (888) 989-5277 or www.njforeclosuremediation.org

<http://www.makinghomeaffordable.gov/>

<http://www.mededfund.org/NJgroups/index.htm>

<http://www.995hope.org/>

Appendix A

Union County Welfare & Workforce Offices

Union County

342 Westminster Avenue, Elizabeth, NJ 07207 (908) 965-2700

Mon. - Fri. - 8:30 am – 4:00 pm

Providing General Assistance services to the following locales:

Elizabeth; Hillside; Kenilworth; Linden; Roselle; Roselle Park; Springfield; Union; and Winfield

200 West Second Street, Plainfield, NJ 07063 (908) 791-7000

Mon. - Fri. - 8:30 am – 4:00 pm

Providing General Assistance services to the following locales:

Berkeley Heights; Clark; Cranford; Fanwood; Garwood; Mountainside; , New Providence; Plainfield; Rahway; Scotch Plains; Summit and Westfield

Union County Division of Social Services (UCDSS) provides direct support services to the needy families of Union County by administering the following programs:

- Temporary Assistance to Needy Families (TANF)
- Homeless Shelter Placement
- SNAP (Food Stamp Program)
- Rent Assistance
- Pharmaceutical Assistance to the Aged & Disabled (PAAD)
- Child Support
- Refugee Resettlement Program
- Welfare Fraud Unit
- Boarder Home Placement
- Work First New Jersey (WFNJ)
- Health Related Programs
- Medicaid Programs
- Emergency Assistance
- Home Energy Assistance Program

UCDSS also provides General Assistance to needy single adults for the municipalities listed above.

Municipal Welfare Offices provide **General Assistance (GA)** to **needy single adults** in the municipalities listed below:

Location	Telephone	Hours of Operation
KENILWORTH - 567 Kenilworth Boulevard	(908) 276-6461	Wed. (by appointment only 10:00 am– 5:00 pm)
LINDEN - 605 S. Wood Avenue	(908) 474-8620	Mon. to Fri. 8:30 am - 4:30 pm

One-Stop Career Centers

Hours: Monday through Friday

24 Hour Hotline

8:00 am – 6:00 pm

(877)-527-7587

921 Elizabeth Ave., Elizabeth, NJ 07201

(908) 558-8000

Fax: (908) 558-8005

Reconnections (Prisoner Re-Entry Program) (908) 558-8000 Ext. 3272

Union County College (Satellite), 12-24 West Jersey St., Elizabeth, NJ 07201

(908) 659-5214

200 West 2nd St., Plainfield, NJ 07063

(908) 757-9090

Fax: (908) 757-9094

Reconnections (Prisoner Re-Entry Program) (908) 757-9090 Ext.7311

Services: Clients have access to One-Stop computers for posting resumes and/or job searches; Assessment of the individual's skills, aptitudes and work experience; Information on training providers; Information on support services; Training (if appropriate); Employment counseling; Job readiness program; Programs for workers who have been laid off; Workforce Development Program; Public access to Job Bank, Resume Bank, Directories of training and services; Adult basic literacy services; Assistance in establishing eligibility for Welfare to Work and/or financial aid.

Cinderella's Closet – clothing for job interviews: (908) 558-8000 Ext. 3262 or 3277

Appendix B

Food Pantry / Meals Information

Municipality	Location	Hours of Operation/Limitations
CRANFORD	Catholic Charities Archdiocese Of Newark 505 South Avenue East (908) 497-3900	PANTRY – Call at 8:30 am – Only 2 appointments daily for referral to Westfield Food Pantry
	Cranford Family Care Association 61 Myrtle Street (908) 276-3530	PANTRY – Monday to Friday 9:00 am - 4:00 pm. Call first: Must be Cranford resident
ELIZABETH	Elizabethport Presbyterian Center 154 First Street (entrance on South Park Street) (908) 659-2182	PANTRY – Last week of the month 3:30 am – 3:00 pm. Union County residents only
	First Baptist Church of Cranford/Elizabeth 402 Union Avenue (908) 352-0519	PANTRY - 2 nd , 3 rd , 4 th & 5 th Thursdays 4:00 pm – 7:00 pm - KITCHEN - Sundays 3:00 pm – 4:00 pm - Light Dinner Wednesday 7:30 pm with required Bible study
	First Presbyterian Church (at Caldwell Place) 42 Broad Street (908) 353-1518	HOT DINNER – Wednesdays 5:00 pm – 6:00 pm at Second Presbyterian Church during renovations through 2014
	Jefferson Park Ministries 477 Madison Avenue (908) 469-1519	PANTRY - 2 nd & 4 th Thursdays 10 :00 am – 12:00 pm & 4:00 pm – 6:00 pm
	Jewish Family Services of Central New Jersey (Kosher) 655 Westfield Avenue (908) 352-8375	PANTRY - Monday to Thursday 9:00 am - 4:30 pm & Fridays 9:00 am - 3:30 pm - Also one Sunday per month 9:00 am – 10:00 am (call first)
	Liberty Baptist Church 515-517 Court Street (908) 354-3362	KITCHEN - Mondays 12:00 Noon – 2:00 pm (across the street at 510 Court St)
	Mount Teman A.M.E. Church 160 Madison Avenue (908) 351-2625	PANTRY – 4 th Thursdays 10:00 am – 12:00 pm and KITCHEN – 4 th Saturdays 11:00 am – 2:00 pm
	Mount Zion Pentecostal 1016 Lafayette Street (908) 351-2170	BREAKFAST - Sundays 8:00 am – 8:30 am sharp
	New Bethel Baptist Church 856 East Jersey Street (908) 527-9115	KITCHEN - 2 nd & 4 th Saturdays 9:00 am - 12:00 Noon
	New Hope Memorial Baptist 91 Division Street (908) 352-5750	KITCHEN - Saturdays 9:00 am – 12:00 Noon
	Saint John's Episcopal Church 61 Broad Street (908) 352-1218	KITCHEN – Sundays 1:15 PM
	Saint Joseph's Social Service Center 118 Division Street (908) 352-2966 (908) 352-2989	Sandwich / bread – Monday to Friday 9:00 am & 1:00 pm; KITCHEN – Saturdays 11:30 am – 1:00 pm PANTRY – 3 rd , 4 th Tuesdays 9:00 am – 11:30 am for the area between Fourth Street and Jefferson Avenue
	Saint Mary of the Assumption 155 Washington Avenue (Enter behind the church on Race Street) (908) 352-5154	KITCHEN – 2 nd , 3 rd , & 4 th Wednesdays 11:30 am – 12:30 pm Pantry – 3 rd , 4 th , 5 th Tuesdays 9:00 am

Appendix C-1

Municipality	Location	Hours of Operation/Limitations
Elizabeth (continued)	Salvation Army 1005 East Jersey Street (908) 352-7057	PANTRY – 9:00 am - 11:45 am the first 10 weekdays of the month by appointment. KITCHEN – 12:00 pm – 1:00 pm the last 10 weekdays of the month (NOT Saturday or Sunday) Bring picture ID, proof of income, lease, utilities; if children, bring birth certificates
	Second Presbyterian Church 1161 East Jersey Street (908) 352-1659	LIMITED KITCHEN- Last 10 weekdays - 12 Noon - 2:00 pm; Agape Kitchen: Wednesday 5:00 pm - 6:00 pm
	Second Macedonian Baptist Church 1251 Fairmount Avenue (908) 353-0024	KITCHEN - 2 nd Saturdays of the month 11:00 am - 2:00 pm
	Shiloh Baptist Church 95 Murray Street (908) 355-3777	KITCHEN 3 rd & 4 th Saturdays 9:00 am – 12:00 pm & every 4 th Wednesday 4:00 pm – 7:00 pm
	StreetLight Mission 1181 East Broad St. (908) 820-8324	LIMITED PANTRY – Tuesdays 10:00 am – 2:00 pm,- Saturdays 10:00 am - 1:00 pm. Union County residents only. Call first
	Union Baptist Church *Use parking lot stairs 1088 East Grand Street (908) 527-8064	KITCHEN - 3 rd Saturdays of month 11:00 am – 1:00 pm - PANTRY Monday and Tuesday with referral from StreetLight at 1181 E. Broad Street)
	WIC (Women, Infants and Children) - 40 Parker Road (908) 994-5141	Monday to Friday 8:30 am – 4:30 pm Women with children from infants up to 5 years of age for all Union County residents except Plainfield
FANWOOD	Fanwood Presbyterian Church Mission Committee (P.O. Box 69) 74 Martine Avenue (908) 889-8891	PANTRY – 3 rd Saturdays 9:30 am – 12:00 pm (Need agency referral)
HILLSIDE	Christ the King 411 Rutgers Avenue (908) 686-0722	Emergency food bag - Hillside residents only - Call first with referral from Town Hall or agency
	First Baptist Church 166 Hillside Avenue (908) 351-7699 (973) 926-1244	1 st , 2 nd , 3 rd , and 4 th Saturdays 9:30 am – 11:00 am. Come at 8:00 am to sign in and receive number
KENILWORTH	Saint Theresa Church 541 Washington Street (908) 272-4444	Call church to make arrangements for pick up
LINDEN	Linden Interfaith Network for Community Services (LINCS), Inc., at St. Paul's Lutheran Church 45 East Elm Street (908) 925-2523	PANTRY – 3 rd Mondays & Tuesdays 9:00 am – 12:00 pm - Call for Appointment: Linden residents only
	Linden Presbyterian Church Mission Project 1506 Orchard Terrace (908) 486-3073	PANTRY - 4 th Fridays 9:00 am – 11:00 am and by appointment
	Saint John the Apostle Pantry 1805 Penbrook Terrace (732) 388-1216	PANTRY – Usually the 2 nd & 4 th Fridays 12:00 pm – 3:00 pm. Call ahead to check dates
NEW PROVIDENCE	Our Lady of Peace Church 111 South Street (908) 464-7600	PANTRY – Monday to Friday 9:00 am – 4:00 pm - Call for appointment
PLAINFIELD	Bethel Presbyterian Church 300 East 5 th Street (908) 757-5390	KITCHEN – 2 nd Saturdays of the month 12:00 pm – 1:00 pm EXCEPT for July and August

Appendix C-2

Municipality	Location	Hours of Operation/Limitations
PLAINFIELD (continued)	Community Church of God 417 West 6 th Street (732) 249-4988	PANTRY – 3 rd Saturdays 9:00 am – 12:00 pm & 2 nd and 4 th Thursdays 12:00 pm – 2:00 pm Emergencies: Call for appointment
	Crescent Avenue Presbyterian Church 716 Watchung Avenue (908) 756-2468	LUNCH Bag - Monday to Friday (closed on holidays) 10:00 am - First 50 served
	First-Park Baptist Church 315 West 7 th Street (908) 756-5322	BREAKFAST 8:00 am - 9:00 am and DINNER 4:00 pm – 6:00 pm the last Saturday of the month
	First Unitarian Society of Plainfield 724 Park Avenue (908) 756-0750	PANTRY – 3 rd & 4 th Saturdays 12:00 pm – 2:00 pm
	Grace Episcopal Church (Grace's Kitchen) 600 Cleveland Avenue (908) 756-1520	KITCHEN – last 5 weekdays of the month 11:30 am – 1:00 pm (NOT Sunday)
	Masjidullah (Muslim Community Soup Kitchen, Inc.) 321-5 Grant Avenue (908) 561-6767	KITCHEN – Saturdays 1:00 pm – 2:00 pm
	Metropolitan Seventh Day Adventist 1003 West 4 th Street (908) 561-0141	PANTRY – Tuesdays & Thursdays 1:00 pm – 5:00 pm
	Saint Mary's Church 516 West 6 th Street (908) 756-0085	KITCHEN: Sundays 3:00 pm – 4:00 pm
	Salvation Army – Plainfield 615 Watchung Avenue (908) 756-2595	PANTRY – Tuesdays /Wednesdays / Thursdays 9:30 am - 11:30 am and 1:30 pm - 2:30 pm KITCHEN Monday to Friday 12:00 pm - 12:45 pm but NOT the last 5 week- days of the month (and NOT December)
	Shiloh Baptist Church 515 West 4 th Street (908) 754-3353	PANTRY – 3 rd and 4 th Saturdays 9:00 am – 12 pm; 4 th Wednesday 4:00 – 7:00 pm KITCHEN – Wednesday & Thursday 4:00 pm – 6:00 pm
	Starfish Food Pantry of Plainfield at Covenant United Methodist Church 631 East Front Street (908) 755-8888	PANTRY - Tuesdays/Thursdays/Fridays 9:00 am – 11:00 am (Plainfield area only -Agency Referrals/Emergencies)
	United Presbyterian Church of Plainfield 525 East Front Street (908) 756-2666	KITCHEN: 3 rd Sundays of the month 5:00 pm – 6:00 pm
	WIC Program in Plainfield 510 Watchung Ave. (908) 753-3397	Monday to Friday 8:30 am – 4:30 pm Women with children from infants up to 5 years of age
RAHWAY	Rahway Community Action Organization 796 East Hazelwood Avenue (732) 382-9311	PANTRY - Emergencies & limited to Rahway residents only
	Second Presbyterian Church (Food for Friends) 1221 New Brunswick Avenue (732) 388-3988 (732) 388-1136	PANTRY – Mondays/Tuesdays of the last full week in the month 10:00 am – 12:00 pm: Call for Appointment - KITCHEN-Saturdays 12:00 pm - 1:30 pm
ROSELLE	Heard A.M.E. Church 310 East 8 th Avenue (908) 241-6890 (908) 241-5588	PANTRY – Some Saturdays 10:00 am - 12:00 pm & Emergencies (Need 2 forms of ID - proof of residence)
	Helping Hands - Church of St. Joseph the Carpenter 157 East 4 th Avenue (908) 241-1250	PANTRY - 2 nd Saturdays of the month 1:00 pm – 4:00 pm - Call first to register

Appendix C-3

Municipality	Location	Hours of Operation/Limitations
ROSELLE PARK	Casano Community Center 314 Chestnut Street (908) 245-0666	PANTRY – Wednesdays 10:00 am – 2:00 pm. Roselle Park residents only
	Church of the Assumption - Parish Hall 113 Chiego Place (908) 245-1107	PANTRY - 2 nd and 4 th Tuesdays of the month 10:00 am - 11:00 am
SCOTCH PLAINS	City Hall Municipal Building 430 Park Avenue (908) 322-6700	PANTRY – Tuesdays 9:30 am – 11:00 am by the Recreation Department office
	Immaculate Heart of Mary Church 1571 South Martine Avenue (908) 889-2100	PANTRY – Wednesdays 11:00 am – 12:00 pm - 2 nd Sundays 8:00 am – 12:00 pm
SUMMIT	Saint Theresa's Church (Loaves and Fishes) 306 Morris Avenue (908) 277-3700	PANTRY – Wednesdays 9:00 am -11:00 am - Call first: Summit residents only
UNION	Connecticut Farms Presbyterian Church 888 Stuyvesant Avenue (908) 688-3164	PANTRY – 3 rd Saturdays 10:00 am – 12:00 pm (except November 12:00 pm – 2:00 pm) Union residents only
	Saint Michael's Church Parish Center, Orange Avenue (908) 688-1232	Call first
	Township of Union Food Pantry Municipal Building, 1776 Morris Avenue (908) 851-8501	Open during business hours. Union residents only with proof of residency and income
	Ukrainian Evangelical Assemblies of God 2208 Stanley Terrace (908) 686-8171	PANTRY – Wednesdays 5:00 pm – 6:45 pm
WESTFIELD	Westfield Food Pantry at Holy Trinity Church 336 First Street (908) 232-2311	PANTRY – Monday to Friday 9:30 am – 12:30 pm - Call for an appointment
	Westfield Red Cross 321 Elm Street (908) 232-7090	Red Cross provides mandatory referral for the Westfield Food Pantry

Appendix C-4

**** Also check the New Jersey Anti-Hunger Coalition at <http://njahc.org/union-county-food-pantry.html> OR (201) 569-1804**

NUTRITION PROGRAM FOR SENIORS

Call toll free 1-888-820-8226 for information.

This section lists congregate (group) nutrition sites which serve a hot meal to county residents 60 years of age and older and home-delivered meal services which deliver a hot meal daily to the homes of isolated frail residents in the same age categories. Voluntary donations are suggested, and are used to expand the program. By regulation, these meals provide one-third of the recommended daily dietary allowance. *Call the Nutrition Site Manager at least one day in advance before noon for reservations. **Note: Lunch is the meal that will be served.***

Cranford

Lincoln Senior Apts., 800 Lincoln Ave. East (Tuesday & Thursday only) (908) 931-0194

Elizabeth

Farley Towers, 33 Cherry St. (908) 965-2454

Liberty Square Senior Center, 240 Elizabeth Ave. (908) 820-4700

O'Donnell-Dempsey Senior Center, 622 Salem Ave. (908) 354-7431

Peterstown Community Center, 408 Palmer St. (at 4th Ave.) (908) 820-4225

Stephen Sampson Senior Center, 800 Anna St. (908) 820-4707

Hillside

Hillside Senior Citizen Center, 265 Hollywood Ave. (908) 355-8928

Kenilworth

Kenilworth Senior Center, 526 Boulevard (Monday, Wednesday & Friday) (908) 272-7743

Linden

Ann J. Ferguson Towers, 1601 Dill Ave. (908) 298-3820

Gregorio Center, 330 Helen St. (908) 474-8629

Plainfield

Plainfield Senior Services, 400 East Front St. (908) 753-3506

Plainfield Tower West, 601 West 7th St. (908) 668-1963

Richmond Towers, 510 East Front St. (908) 769-6335 Ext. 608

Rahway

JFK Senior Apartments, 250 West Grand Ave. (732) 382-4188

Roselle

Roselle Community Center, 1268 Shaffer Ave. (Brunch - Thursday only) (908) 245-6717

Roselle Park

Casano Community Center, 314 Chestnut St. (Tuesday only) (908) 245-9150

Scotch Plains

Jewish Community Center, 1391 Martine Ave. South (Kosher site – Monday, Tuesday & Wednesday only) (908) 889-8800

Union

Ehrhart Gardens, 100 Francis Court (Monday, Tuesday & Thursday only) (908) 688-0565

Schaeffer Gardens, 35 Summer Ave. (Wednesday & Friday only) (908) 964-9343

Union Township Senior Center, 968 Bonner Court (908) 851-5293

YM-YWHA – A Jewish Community Center, 501 Green Lane (Kosher site) (908) 289-8112

Union/Vauxhall

Bethel A.M.E. Church, 241 Hilton Ave. (Tuesday & Thursday Only) (908) 964-1282

Westfield

Westfield Community Center Association, 558 West Broad St. (Tuesday, Wednesday & Thursday only) (908) 232-4759

Winfield

James F. Buckle Center, 25 Roosevelt Drive (908) 925-2014

UTILITY / RENT ASSISTANCE INFORMATION / CODE BLUE / SHRAP

Agencies Providing Utilities Assistance

Catholic Charities, Archdiocese of Newark	505 South Ave. East, Cranford, NJ 07016	(908) 497-3966
Homefirst, Inc.	905 Watchung Ave., Plainfield, NJ 07060	(908) 753-4001 X16
Jefferson Park Ministries	1147 E. Jersey St., Elizabeth, NJ 07207	(908) 469-9508
PROCEED, Inc.	1126 Dickinson St., Elizabeth, NJ 07201	(908) 351-7727
Salvation Army - Elizabeth	1005 E. Jersey St., Elizabeth, NJ 07201	(908) 352-7057
Salvation Army – Plainfield	615 Watchung Ave, Plainfield, NJ 07060	(908) 756-2595
Urban League of Union County, Inc.	288 N. Broad St., Elizabeth, NJ 07208	(908) 351-7200

Agencies Providing Rent Assistance

Catholic Charities, Archdiocese of Newark	505 South Ave. East, Cranford, NJ 07016	(908) 497-3966
Community Access Unlimited	80 W. Grand St., Elizabeth, NJ 07208	(908) 354-3040
Elizabeth Coalition to House the Homeless	118 Division St., Elizabeth, NJ 07201	(908) 353-4002
Homefirst, Inc.	905 Watchung Ave., Plainfield, NJ 07060	(908) 753-4001 X16
Jefferson Park Ministries	213 Jefferson Ave., Elizabeth, NJ 07201	(908) 469-9508
Plainfield Action Services	510 Watchung Ave., Plainfield, NJ 07060	(908) 753-3519
PROCEED, Inc.	1126 Dickinson St., Elizabeth, NJ 07201	(908) 351-7727
Salvation Army - Elizabeth	1005 E. Jersey St., Elizabeth, NJ 07201	(908) 352-7057
Salvation Army – Plainfield	615 Watchung Ave, Plainfield, NJ 07060	(908) 756-2595
Urban League of Union County, Inc.	288 N. Broad St., Elizabeth, NJ 07208	(908) 351-7200

Code Blue

To prevent death and injury among homeless people during periods of extreme winter weather, Code Blue days are called if the night temperature is predicted to be below 25 degrees or 32 degrees with precipitation. The County's Department of Human Services then notifies emergency shelters, community organizations, and the County Police (who then inform law enforcement personnel in all 21 municipalities). County and municipal police look out for persons needing shelter and assist them with transportation. Shelter placements are made by the Division of Social Services and an overnight emergency phone number is given to local police. Code Blue also aids in tackling issues related to chronic homelessness with screening and counseling.

For more information, agencies can contact Maureen Glenn (908) 527-4838. To be added to the email list of Code Blue notifications, you must have a Union County First Alert account. Please log on to <http://www.ucfirstalert.com> to register. **If you are new to First Alert:** On the left column click *New User* (if you have not previously signed up for First Alert). Enter in your name and e-mail you would like to receive the CB First Alerts at, create a password and agree to the policy then validate. On the next screen type in your home zip code, then click continue. The next screen will verify how you will get notifications. Click continue. The next screen under Public Information, click *Homeless Providers* to add this group to your notifications. Click continue. You have just signed up for the CB notification. It will take you to the main screen and you can log out. **If you already have a First Alert account:** Log in and under My Alerts, select *Homeless Providers* under Public Information. Click continue to save. You have just signed up for the CB notification. It will take you to the main screen and you can log out.

Appendix E-1

Sandy Homeowner and Renter Assistance Program (SHRAP)

Union County was awarded *Sandy Homeowner and Renter Assistance Program (SHRAP)* funds. These funds are to help individuals/families with expenses for housing, current or past due utility payments and for the replacement of essential items such as furniture and appliances. To be eligible, the expense must be a direct result of the disaster. Housing payments can be issued to meet a need for current or past due rent or mortgage. If a household needs assistance with ongoing housing expenses, the household must make a request with a new affidavit/worksheet every month to ensure that program funding remains available.

ELIGIBILITY: SHRAP is time-limited to six months of assistance per household. In order to be eligible for the program, an individual or family unit must:

- Have financial distress directly related to housing which is a direct result of Superstorm Sandy;
- Be a U.S. citizen or eligible alien;
- Not currently be receiving Work First New Jersey (WFNJ) benefits or eligible for WFNJ/SSI Emergency Assistance; and
- Be legally or blood related if part of a household.

VERIFICATION: Prior to providing services, all eligibility factors (financial need, citizenship/alien status, need resulting from Sandy, not eligible for WFNJ/SSI EA and family relationship) must be verified. The primary method of verifying identity/residency is a NJ Driver's License; however, verifications may include:

- A valid driver's license or state-issued photo ID;
- A mortgage statement;
- A lease agreement;
- A utility bill;
- Birth certificate;
- An affidavit or statement regarding current living arrangements;
- Homeowner's Insurance documents; or
- Proof of FEMA registration (if applicable).
- The Social Security number of the head of household is required.

Where to Apply: You can apply for SHRAP benefits in the County in which you currently are residing; you do not have to file in the county where the damage was incurred. Visit the New Jersey Department of Human Services/Division of Family Development website for a list of locations throughout Union County: <http://www.state.nj.us/humanservices/dfd/programs/shrap/>

Appendix E-2

CLOTHING / FURNITURE INFORMATION

Agencies That Provide Clothing / Furniture

Elizabeth Coalition to House the Homeless 118 Division St, Elizabeth, NJ 07201	(908) 353-4002
Furniture Assist (must be referred by a social service agency) 398 Chestnut St., Union, NJ 07083	(973) 868-6007
Goodwill Home & Missions, Inc (Bread of Life) 79 University Ave, P.O. Box 7026 Roseville Station, Newark, NJ 07102	(973) 621-9560
Homefirst 905 Watchung Ave, P.O. Box 569, Plainfield, NJ 07060	(908) 753-4001
Jefferson Park Ministries 477 Madison Ave, Elizabeth, NJ 07201	(908) 469-9508
Kathleen's Closet Thrift Store (Community Food Bank) 15-19 Evans Terminal, Hillside, NJ	(908) 242-3955
Salvation Army – Elizabeth 1005 E. Jersey St, Elizabeth, NJ 07201 (Corps) 1018 E. Grand St, Elizabeth, NJ 07201 (Shelter) 1025 W. St. Georges Ave, Linden, NJ 07036 (Store)	(908) 352-7057 (908) 352-2886 (908) 583-5082
YMCA of Eastern Union County 135 Madison Ave, Elizabeth, NJ 07201	(908) 355-9622
YWCA of Eastern Union County 1131 E. Jersey St, Elizabeth, NJ 07201	(908) 355-1500

Agencies That Accept Clothing / Furniture Donations

Furniture Assist info@furnitureassist.com ♦ Union County pickups are typically on Wednesdays	(973) 868-6007
Jefferson Park Ministries ♦ Contact Agency for pick-up arrangements ♦ Donations are given directly to the needy	(908) 469-9508
Missions Possible, 261 Monroe Ave., Kenilworth, NJ 07033	(908) 377-5257
Robertson Resource Center, 25 Maple Avenue, Union, NJ 07088 Also distributes furniture, toys, and household goods	(908) 851-0773
Salvation Army, Elizabeth (Minimum of 10 or more bags of clothing; 2 or more furniture items) ♦ Pick-up donations anywhere in Union County ♦ Call to make pick-up arrangements	(908) 352-7057 or 1-800-SA-TRUCK (1-800-728-7825)
Unique Thrift Store, 116 Broad St., Elizabeth, NJ 07201 2485 US Highway 22 West, Union, NJ 07083	(908) 994-0600 (908) 688-6822
Vietnam Veterans of America (clothing, small furniture, and household items) ♦ Pick-up items according to zip code of donor on certain days of the week ♦ You may also go online to www.ScheduleAPickup.com	(800) 775-8387 (800) 775-VETS

Appendix F

Homeless Education (for DCP) Liaison

To assist in the identification of homeless families as well as informing homeless families and youth of their eligibility for McKinney-Vento education services

DISTRICT	CONTACT	TELEPHONE #	EMAIL
BERKELEY HEIGHTS	Judith Rattner	908-464-1718	jrattner@bhpsnj.org
CENTRAL JERSEY ARTS CLARK	Daneen Grayson	908-753-0030	dgrayson@cjacarts.org
	Colleen Gialanella	732-574-9600 x3263	cgialanella@clarkschools.org
CRANFORD	Dr. Laura Weitzman Interim	908-709-6218	weitzman@cranfordschools.org
ELIZABETH	Lisette Calvo	908-436-5340	calvol@elizabeth.k12.nj.us
GARWOOD	Teresa Quigley	908-789-0331 x2102	tquigley@garwoodschools.org
HILLSIDE	Dr. Sandra Mercedes	908-352-7664 x8460	smercedes@hillsidek12.org
KENILWORTH	Jill Cagney	908-931-9696 x311	jill_cagney@kenilworthschools.org
LINDEN	JoAnn Hamilton	908-486-2800 x157	jhamilton@linden.k12.nj.us
MORRIS-UNION	N/A		
MOUNTAINSIDE	Dr. Nancy Lubarsky	908-232-3232 x141	nlubarsky@mountainsideschools.org
NEW PROVIDENCE	Dr. Deborah Feinberg	908-464-9050 x222	dfeinberg@npsd.us
PLAINFIELD	Anna Belin-Pyles	908-731-4335	abelinp@plainfield.k12.nj.us
QUEEN CITY ACADEMY	Theresa A. Radline	908-753-4700	tradline@queencity.edu
RAHWAY	Larry Abramowitz	732-396-1035	labramowitz@rahway.net
ROSELLE	Monica Crapis	908-298-2056	mcrapis@roselleschools.org
ROSELLE PARK	James Salvo	908-245-6665	jsalvo@rpsd.org
SCOTCH-PLAINS FANWOOD	Dr. Margaret W. Hayes	908-232-6161 x4001 / 4002	mhayaes@spfk12.org
SPRINGFIELD	Kathryn Warlick	973-376-1025 x2498	kwarlick@springfieldschools.org
SUMMIT	Dr. Nathan Parker	908-918-2100 x3100	nparker@summit.k12.nj.us
UNION	Gregory A. Tatum	908-851-6415	gtatum@twpunionschools.org
UNION CO. ED. SERVICES	Gary Anderson	908-233-9317 x264	ganderson@ucesc.org
UC TEAMS	Melinda Johnson	908-754-9043 x117	
UC VO-TECH	N/A		
WESTFIELD	Dana Sullivan	908-789-4414	dsullivan@westfieldnj.k12.org
WINFIELD	Alice Krihak	908-486-7410	akrihak@winfieldschool.org

*If your district liaison is not listed above, please contact the Educational Specialist in your county office of education:
Union County Office 300 North Avenue East, Westfield, NJ 07090
Phone: (908) 654-9860 Fax: (908) 654-9869*

Appendix G

IMMIGRATION SERVICES

The following organizations and attorneys listed below provide free legal services and/or referrals for such services to indigent individuals in immigration removal proceedings, pursuant to 8 CFR 1003.61. Some of these organizations may also charge a nominal fee for legal services to certain low income individuals.

American Friends Service Committee Immigrant Rights Program 89 Market St., 6 th Floor, Newark, NJ 07102 All cases including asylum; may charge a nominal fee	(973) 643-1924 Fax: (973) 643-8924
Boaz Community Corporation, Inc. 5 Paterson St., New Brunswick, NJ 08901	(732- 220-1535
Catholic Charities Archdiocese of Newark 976 Broad Street, Newark, NJ 07102 All cases including asylum; may charge a nominal fee	(973) 733-3516 Fax: (973) 623-7725
Center for Social Justice Seton Hall Law School Evening Clinic 1111 Raymond Blvd., Newark, NJ 07102	(973) 642-8700
El Centro Hispanoamericano 525 East Front Street, Plainfield, NJ 07060 All cases including asylum; may charge a nominal fee	(908) 753-8730 Fax: (201) 753-8463
The Hebrew Immigrant Aid Society 333 Seventh Ave., New York, NY 10001-5004 (Elizabeth Court only)	(212) 613-1420 Fax: (212) 967-4442
Hispanic Development Corporation 545 Orange St., Newark, NJ 07107	(973) 268-1236
Human Rights First 333 7 th Ave., New York, NY 10001	(212) 845-5200 or (212) 629-6170 Fax: (212) 845-5299
Detention Hotline open 2-5 PM Monday – Friday; represents individuals seeking asylum	
Hudson County Legal Corporation 628 Newark Ave., Jersey City, NJ 07036	(201) 792-6363 Fax: (201) 798-8780
Jewish Family & Vocational Service of Middlesex County 515 Plainfield Ave. – Suite 201, Edison, NJ 08817	(732) 777-1940 (732) 777-1889
Kids in Need of Defense (KIND-serves children under age 18 only) c/o Lowenstein Sandler PC 65 Livingston Avenue, Roseland, NJ 07068	(862) 926-2080
La Casa de Don Pedro, Inc. Immigration Services Program 39 Broadway, Newark, NJ 07104 Represents aliens in asylum proceedings; may charge a nominal fee	(973) 481-4713 Fax: (973) 481-2448
Legal Services of New Jersey (LSNJ) 100 Metroplex Drive at Plainfield Avenue, Suite 402 P.O. Box 1357, Edison, NJ 08818-1357	(888) 576-5529 Fax: (732) 572-0066 Toll free or (732) 572-9100
Detained callers should call LSNJ through the free call-in system provided by Immigration and Customs Enforcement (ICE) at the detention facilities. Handouts with detailed instructions are available in the courtrooms and detention facilities. Asylum, battered women self-petitioning for lawful permanent resident status, and legal permanent residents who must clear their records to open the way to naturalization.	
Lutheran Social Ministries of New Jersey Lutheran Immigration and Refugee Program 189 South Broad Street, P.O. Box 30, Trenton, NJ 08601 All cases including asylum; may charge a nominal fee	(609) 393-4900 (609) 303-1111

LEGAL ASSISTANCE / RESOURCES

Brand New Day, 176 First Street, Elizabeth, NJ 07206	(908) 282-0781
HUD certified foreclosure avoidance counseling.	
Bridgeway, 615 North Broad St., Elizabeth, NJ 07208	(908) 994-8544
Jail diversion for persons with mental illness	
Central Jersey Legal Services, 60 Prince Street Elizabeth, NJ 07208	(908) 354-4340
Civil matters such as: consumer, domestic violence, education, family, health related, landlord/tenant, Social Security, and welfare issues to very low income residents.	
Community Health Law Project, 65 Jefferson Avenue Elizabeth, NJ 07201	(908) 355-8282
Civil matters including: family cases (e.g., non-support, visitation); housing (e.g., assistance to residents of boarding facilities, access to community housing, evictions, homelessness; and public entitlements like General Assistance, Food Stamps, Medicaid, Medicare, Social Security/SSI, TANF to adults who live in the community - and who are current or former recipients of mental health services.	
El Centroamericano, 525 East Front Street, Plainfield, NJ 07060	(908) 753-8730
Case management in legal matters for the Hispanic community.	
Faith Bricks & Mortar 164 East Front Street (rear) Plainfield, NJ 07060	(908) 756-5774
HUD certified foreclosure avoidance counseling.	
Hyacinth, 25 Craig Place, North Plainfield, NJ 07060	(908) 755-0021 / (800) 433-0254
Client advocacy including: discrimination issues, guardianship, legal documents, and Social Security Disability assistance to persons with HIV/AIDS.	
Jefferson Park Ministries, 213 Jefferson Avenue Elizabeth, NJ 07201	(908) 469-9508
Assistance to immigrants and their families in preparing for naturalization examinations, translating documents, and processing the paperwork for registration and naturalization.	
Legal Services of New Jersey (LSNJ) 100 Metroplex Drive at Plainfield Avenue, Suite 402 P.O. Box 1357, Edison, NJ 08818-1357	(888) 576-5529 (732) 572-9100
Civil matters that include: housing (principally tenancy issues); family (divorce, separation, support and custody issues); consumer (bankruptcy, collection cases, warranties, unfair sales practices, and public utilities); income maintenance (Social Security, Work First New Jersey, SSI, Food Stamps, and other such programs); other cases involving education, health, employment, juvenile issues, senior citizens, prisoner reentry, tax assistance, veterans, farm workers, and individual rights. At www.LSNJ.org you can find extensive manuals covering: charity care, child abuse, divorce, domestic violence, expungement, foreclosure, lead paint poisoning, tenancy law, termination of parental rights, and other informational flyers such as rights to an interpreter and welfare rights. At www.LSNJLAW.org you can find legal information, forms, publications, resource directories, and links to other sources of information and help.	
Union County Bar Association, 2 Broad St. -1st Floor Elizabeth, NJ 07207	(908) 353-4715
Website: www.uclaw.com County bar association offers lawyer referral services. Do not contact referral services that are outside of your local county.	
Urban League, 288 North Broad Street, Elizabeth, NJ 07208	(908) 351-7200
HUD certified foreclosure avoidance counseling.	
YWCA of Eastern Union County, 1131 East Jersey Street Elizabeth, NJ 07201	(908) 355-1995
Legal Representation and Court Advocacy Program provides services of an attorney or court advocate specialized in domestic violence to secure restraining orders, child support, spouse support, custody and/or visitation, motion practice and trial work.	

Appendix I

HUD-VASH

This is collaboration between the U.S. Department of Housing and Urban Development (HUD) and the U.S. Department of Veterans Affairs Supported Housing (VASH) program to help homeless veterans and their immediate families find and maintain affordable, safe, and permanent housing in the community. The primary goal is to help veterans and their families successfully move out of homelessness. The program is designed to improve each veteran's health and mental health, and to enhance each veteran's ability to remain stable, housed and integrated in their local community. This is done using HUD Section 8 "Housing Choice" rental assistance vouchers and the VA's intensive case management services.

The HUD-VASH program is for veterans who:

- Are eligible for VA health care services;
- Are currently homeless;
- Have a need for ongoing case management because of medical, mental health, substance abuse or other life problems that are now stabilized;
- Are ready for independent housing but need ongoing services to maintain it;
- Have some type of income to pay for their housing; and
- Are motivated to improve the quality of their lives by working with a VA case manager and participate in activities that promote independence.

Contact the local VA homeless program staff members for more information:

(908) 647-0180 x 4797

(908) 647-0180 x6985

There is also a national Homeless Veterans Hotline available 24/7. Call (877)-4AID VET or (877)-424-3838.

+++++

The Union County Veterans' Services Hotline is (866) 640-7115 to call for all benefits for veterans, including:

- Medical
- Education
- Housing / Homeless
- Employment
- Medals
- Death / Burial and related benefits
- Transportation
- General Assistance

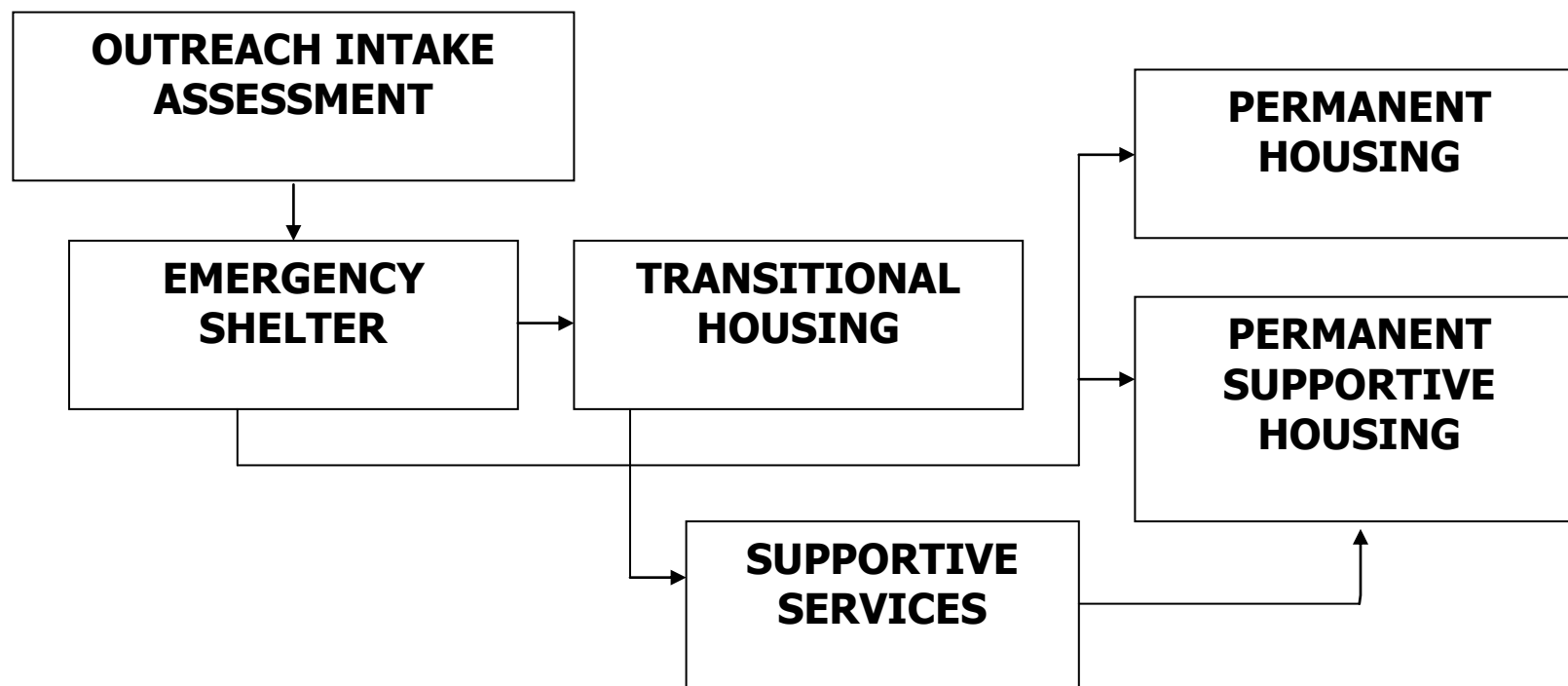
Appendix J

Addition/Correction Form

This image shows a blank sheet of white paper with horizontal ruling lines. The lines are evenly spaced and run across the width of the page. There are no margins, text, or other markings on the paper.

[illegible]

Components of a Continuum of Care Homeless Services System





County of Union

Board of Chosen Freeholders (Calendar Year 2014)

Chairman

Christopher Hudak

Vice Chairman

Mohamed S. Jalloh

Bruce H. Bergen

Linda Carter

Angel G. Estrada

Sergio Granados

Bette Jane Kowalski

Alexander Mirabella

Daniel P. Sullivan

Vernell Wright

Alfred J. Faella

County Manager

William Reyes, Jr.

Deputy County Manager