



# Union County, New Jersey

## Borough of Roselle

<http://www.boroughofroselle.com/>

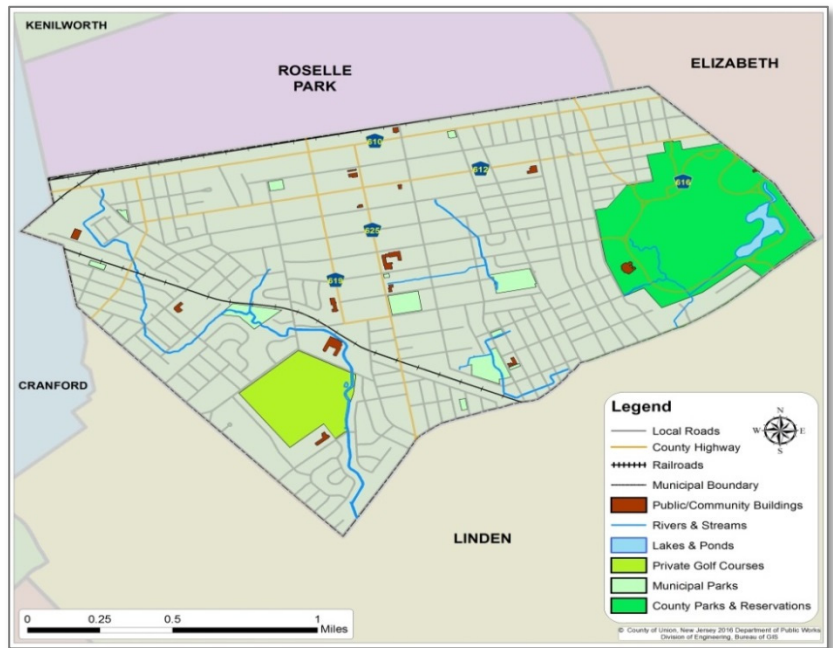


### Demographics

Population	21,466
Land Area (sq. miles)	2.65
Per capita income	\$24,341
Percent below poverty	14.6%
Median household income	\$43,397
Median age	40.1
Total housing units	8,678
Median housing value	\$213,800
Average household size	2.63
Mean travel time to work	32.1 min
Age 3+ enrolled in school	5,682
Persons per square mile	8,100
Unemployment rate	7.4%*

Source: US Census Bureau, 2011 - 2015 American Community Survey (5-Year Estimates)

\*NJ Dept. of Labor and Workforce Development, 2015 Annual Average Municipal Labor Force Estimates



GIS Website to Access High Detail Interactive Map :

<http://ucgis.ucnj.org/UnionCountyGIS/WebPages/Map/FundyViewer.aspx>

### History, Location & Highlights

The Borough of Roselle is located in central Union County and is bordered by Cranford to the west, Linden to the west and south, Elizabeth to the northeast and Roselle Park to the north. In 1883, Roselle was the first village to be electrically lit by Thomas Edison. Roselle was formed from portions of Linden and was incorporated as an independent borough in 1894. The Borough of Roselle is governed by the Mayor/Council form of local government. Roselle has a six member borough council and the mayor is directly elected by the voters. The former Roselle Golf Course site is being redeveloped and will provide 932 residential units. The project is expected to be completed in five phases over the course of the next six years. The completed project will include 326 one-bedroom and 606 two-bedroom units and preserve approximately 40% of the property as open space. In addition, Roselle is developing plans for a new 100,000 square community center and an early childhood learning center. The community center will house a new pool, gym, library, computer lab and recording studio on a five acre site at the intersection of Chandler Avenue and Harrison Avenue. Roselle is part of the State of New Jersey's Urban Enterprise Zone (UEZ) program, which offers a lower sales tax rate and other incentives to promote economic growth and reduce unemployment. Over 200 businesses participate in Roselle's UEZ.

### Transportation

Roselle is bordered to the north by Route 28 and to the south by Route 27, both major commercial arteries connecting it to other destinations in Union County and the State. The NJ Transit Raritan Valley Line runs just north of Roselle and the station in Roselle Park is easily accessible. Additionally, the Northeast Corridor Line runs

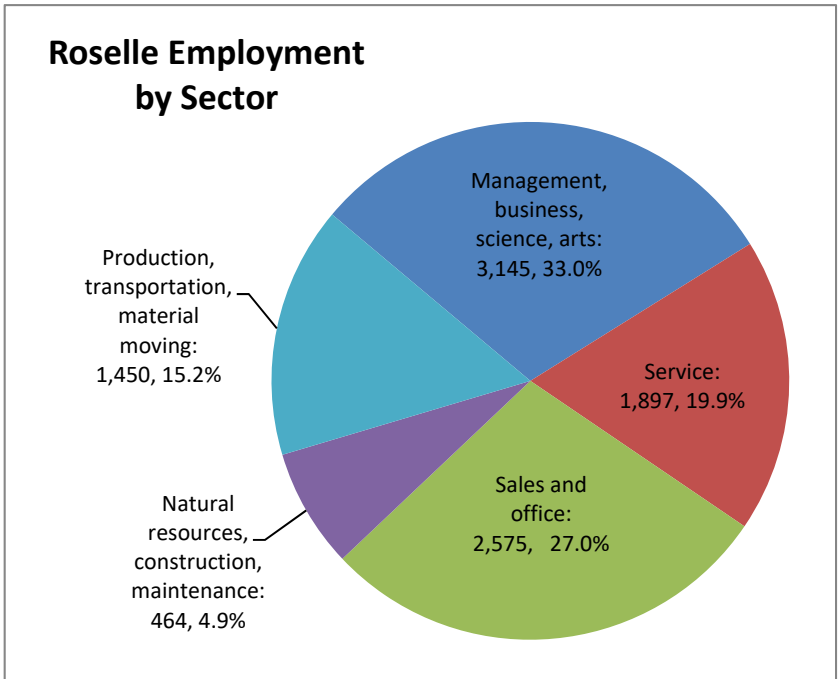


Warinanco Park in Roselle. Source: city-data.com

south of the Borough, with a station in Linden. Roselle Borough is served by NJ Transit bus routes 48, 56, 59, 94, 112 and 115. For workers in Roselle, 85.0% commute via a private automobile, either alone (75.7%) or in a carpool (9.3%), 7.3% use public transportation, and 2.2% walk or ride a bicycle to work. Over 3% of commuters report using a taxicab, motorcycle, or other means of transportation. 41.4% worked outside of Union County and 10.6% worked outside of New Jersey. The average commute time for a worker from Roselle is 32.1 minutes.

### Housing

The Borough of Roselle has 8,678 housing units, 93.7% of which are occupied. Approximately 53.0% of these are owner-occupied and 47.0% are renter occupied. Over half of Roselle's housing units are single-unit, detached, while 28.0% are in structures with three or more units and 15.1% are in structures with two units. The number of homes built before 1960 represents 60.6% of the total housing stock, or 5,260 units. The median housing value in Roselle is \$213,800 and the median gross rent is \$1,084 per month.



Source: US Census Bureau 2011 - 2015 American Community Survey 5-Year Estimates.

### Community Facilities & Services

#### Public Schools:

- Roselle Preschool (PreK)
- Kindergarten Success Academy (K)
- Harrison Elementary School (1-4)
- Dr. Charles C. Polk Elementary School (1-4)
- Washington Elementary School (1-4)
- Leonard V. Moore Middle School (5-6)
- Grace Wilday Junior High School (6-8)
- Abraham Clark High School (9-12)

#### Private Schools:

- St. Joseph the Carpenter School (PreK-8)
- The Shim Academy (PreK-3)
- Roselle Catholic High School (9-12)

#### Public Library:

- Located at 104 West Fourth Street

#### Fire Department:

- Located at 725 Chestnut Street

#### Police Department:

- Located at 210 Chestnut Street

#### Parks & Recreation:

- Warinanco Park
- Sylvester Land Memorial Field



A street in Roselle. Photo Source: securitysystemsny.com

#### Web Links:

- City website: <http://www.boroughofroselle.com/>
- Union County: <http://ucnj.org/>
- Public Schools: <http://www.roselleschools.org/>
- Public Library: <http://www.rosellelibrary.org/>
- Chamber of Commerce: <http://rosellechamberofcommerce.org/>