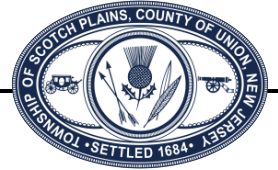




Union County, New Jersey



Township of Scotch Plains

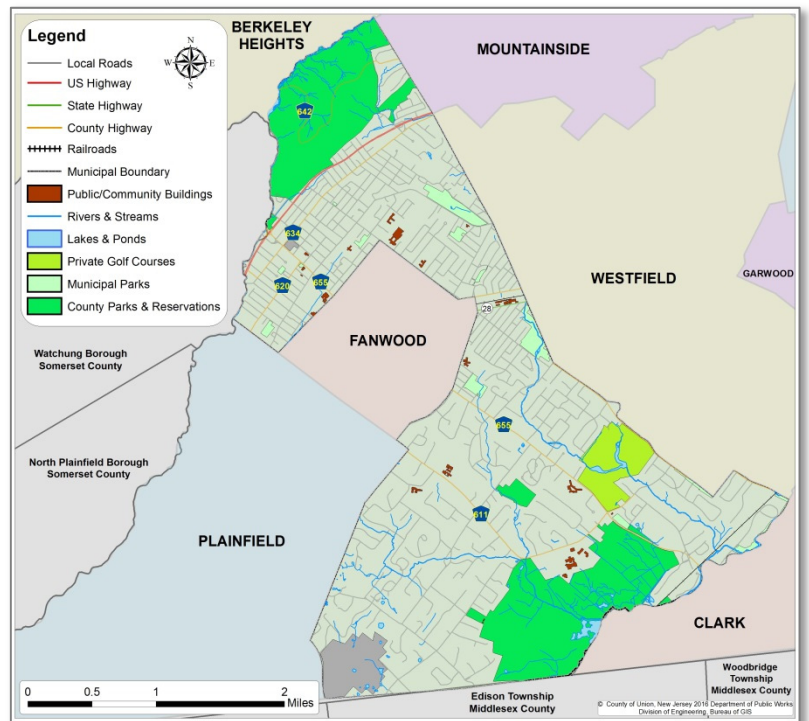
<http://scotchplainsnj.gov/>

Demographics

Population	23,954
Land Area (sq. miles)	9.02
Per capita income	\$52,954
Percent below poverty	2.3%
Median household income	\$110,908
Median age	42.1
Total housing units	8,729
Median housing value	\$473,400
Average household size	2.84
Mean travel time to work	37.2 min
Age 3+ enrolled in school	6,359
Persons per square mile	2,677
Unemployment rate	4.1%*

Source: US Census Bureau, 2011 - 2015 American Community Survey (5-Year Estimates)

*NJ Dept. of Labor and Workforce Development, 2015 Annual Average Municipal Labor Force Estimates



GIS Website to Access High Detail Interactive Map :

<http://ucgis.ucnj.org/UnionCountyGIS/WebPages/Map/FundyViewer.aspx>

History, Location & Highlights

The township of Scotch Plains is located in the western portion of the County and is bordered by Plainfield, Fanwood and Somerset County to the west, Berkeley Heights and Mountainside to the north, Westfield to the east, and Clark to the southeast. Directly south of Scotch Plains is Middlesex County. Scotch Plains was settled by European Quakers in the late 17th century, and developed as a stagecoach stop between New York and Philadelphia. What is now Scotch Plains was originally incorporated as Fanwood Township in 1878 and was renamed Scotch Plains in 1917. Scotch Plains has a mayor and council form of government. Scotch Plains has many recreational amenities, including part of the Watchung Reservation in the north, and the Scotch Hills municipal golf course. The Scotch Hills municipal golf course was opened in 1920 as the Shady Rest Golf Club, the first African-American owned golf and country club in the United States.

Transportation

Although the township does not have its own train station, the Raritan Valley Rail Line runs through the community and residents are in close proximity to stations in neighboring communities. The stations that currently serve residents of Scotch Plains are located in Fanwood, Westfield and Plainfield. A freight rail line runs through the southern portion of the Township, and Routes 22 and 28 also serve the Township.



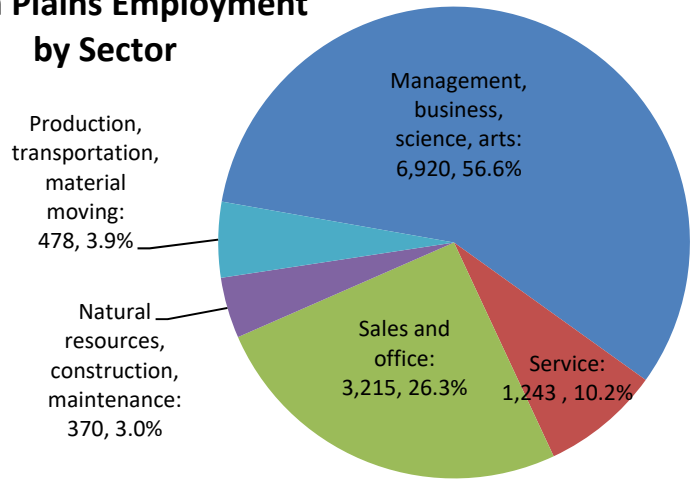
Scotch Plains Municipal Building. Source:

Interstate 78 runs just north of Scotch Plains, and the Garden State Parkway runs to the east. Scotch Plains is served by NJ Transit bus routes 59, 65, 66, 95, 112, 113, 114 and 117. For workers in Scotch Plains, 78.9% commute by private automobile, and 13.5% use public transportation. 43.5% worked in Union County and 17.0% worked outside of New Jersey. The average commute time for a worker from Scotch Plains is 37.2 minutes.

Housing

The Township of Scotch Plains has a variety of housing options, from affordable to upscale. Of its 8,729 housing units, 95.8% are occupied. 77.6% of these are owner-occupied and 22.4% are renter occupied. Three quarters of Scotch Plains’s housing units are single-unit, detached, 6.7% are single-unit attached, 3.1% are in two-unit structures, and 14.2% are in structures with three or more units. 46.4% of the housing stock in Scotch Plains, or 4,045 units, were built prior to 1960. The median housing value in Scotch Plains is \$473,400 and the median gross rent is \$1,389 per month.

Scotch Plains Employment by Sector



Source: US Census Bureau, 2011 – 2015 American Community Survey 5-Year Estimates.

Community Facilities, Services & Utilities

Public Schools:

- Scotch Plains and Fanwood share a high school, two middle schools (5-8), and five elementary schools (K-4)

Private Schools:

- St. Bartholomew Academy (PreK-Grade 8)
- Union Catholic Regional High School (9-12)
- Newmark K-8 & Newmark High School (children and young adults (K-12) with developmental disabilities)

Public Library:

- Located on 1927 Bartle Avenue

Fire Department:

- Fire Headquarters located at 430 Senger Place
- Fire Station #2 located at 1910 Raritan Road

Police Department:

- Located at 430 Park Avenue

Scotch Plains Rescue Squad:

- Operates 24/7
- 53 volunteer members

Parks & Recreation:

- Brookside Park
- Farley Avenue Park
- Green Forest Park
- Haven Park
- Jerseyland Park
- Kramer Manor Park
- Memorial Park
- Ponderosa Park
- Scotch Hills Golf Course
- Watchung Reservation (*portion of*)

Web Links:

- City website: <http://scotchplainsnj.gov/>
- Union County: <http://ucnj.org/>
- Public Schools: <http://spfk12.org>
- Public Library: <http://www.scotlib.org/>
- Zoning Map & Master Plan: <http://www.scotchplainsnj.gov/departments/planning-board/>



Historic Shady Rest Golf & Country Club. Source: Julie Aylesworth