



Union County, New Jersey



Township of Union

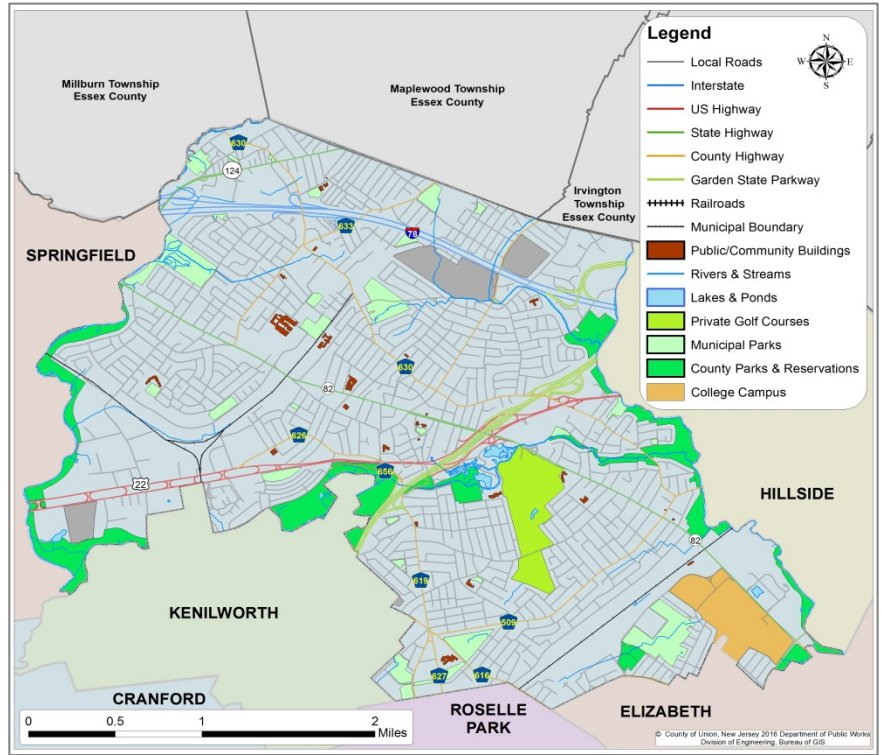
<http://uniontownship.com/>

Demographics

Population	57,606
Land Area (sq. miles)	9.07
Per capita income	\$33,666
Percent below poverty	8.0%
Median household income	\$75,742
Median age	41.9
Total housing units	21,563
Median housing value	\$307,500
Average household size	2.73
Mean travel time to work	31.4
Age 3+ enrolled in school	14,431
Persons per square mile	6,351
Unemployment rate	4.2%*

Source: US Census Bureau, 2011 - 2015 American Community Survey (5-Year Estimates)

*USDOL Bureau of Labor Statistics – November 2016



GIS Website to Access High Detail Interactive Map :

<http://ucgis.ucnj.org/UnionCountyGIS/WebPages/Map/FundyViewer.aspx>

History, Location and Highlights

The Township of Union is located in north-central Union County, bordered by Essex County to the north, Springfield to the west, Kenilworth, Roselle Park and Elizabeth to the south, and Hillside to the east. It was settled in 1677, incorporated in 1809 and has a township form of government with five elected officials. Union has a rich history—it was the site of the Battle of Connecticut Farms, one of the last New Jersey battles during the Revolutionary War. Another Revolutionary site, Caldwell Parsonage, is a National Register historical site and museum. Union boasts recreation and open space amenities, including a state-of-the-art soccer field at Volunteer Park, and the Tom Mahoney Military Park, named for a distinguished Union veteran and survivor of the attacks on Pearl Harbor. The Park is a partnership between the Veteran’s Alliance Committee and the Township of Union, and it provides quiet reflection and education as well as hosting patriotic events and holiday celebrations. Union is home to Kean University, a public research university, and the Bed Bath & Beyond corporate headquarters. It also hosts the Annual Union County St. Patrick’s Day Parade. The Township of Union received the Sustainable Jersey Bronze Certification in October 2014.

Transportation

The Township of Union is traversed by a network of local and regional roadways including the Garden State Parkway, Interstate 78, U.S. Route 22, and State Route 82 (Morris Avenue). The Township is also located only minutes away from Newark Liberty International Airport. Union is only a short train ride to New York City on the Raritan Valley Line, with a



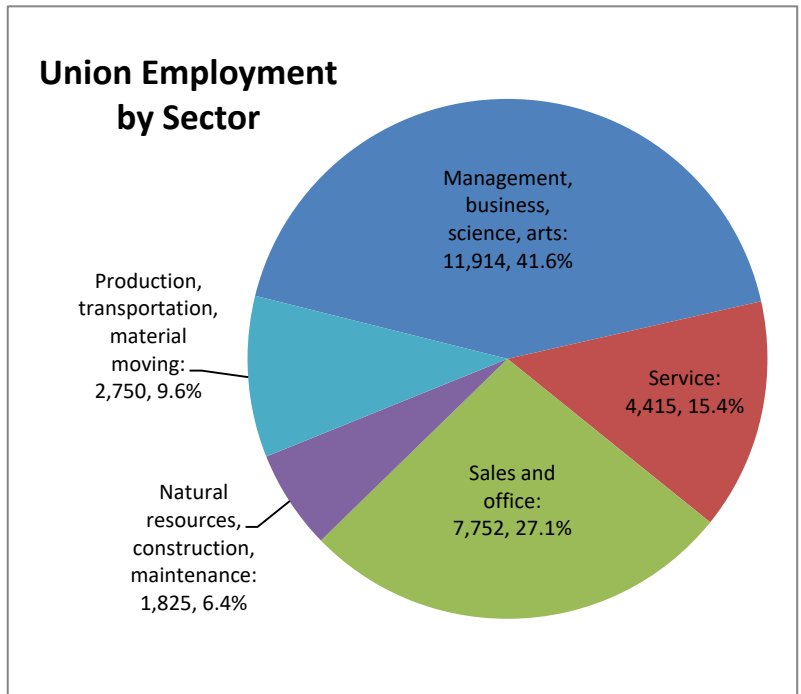
Union Municipal Building. Photo Source: NYTimes.com

train station located on Green Lane near Kean University. In March 2014, NJ Transit added the One Seat Ride Service for weekday off-peak hours, with plans to eventually expand this to include weekend and rush-hour services. In Union, 86.2% of workers commute by car, truck or van, and 8.1% use public transportation. Over half worked outside of the County and 11.5% worked out of state. The average commute time of a Union worker is 31.4 minutes.

Housing

The Township of Union has 21,563 housing units, 95.2% of which are occupied. 73.5% (15,093) are owner-occupied, while 26.5% (5,429) are occupied by renters. 65.8% of the housing stock in Union is single-unit, detached style, 4.2% is single-unit, attached, 13.3% is in two-unit structures, and nearly 17% is in structures with more than two units. 65.1% of Union’s housing stock was built prior to 1960. The median housing value in Union is \$307,500, and the median gross rent is \$1,355.

Source: US Census Bureau 2011 - 2015 American Community Survey (5-Year Estimates)



Community Facilities, Services, Utilities

Public Schools:

- Union High School (9-12)
- Burnet Middle School (6-8)
- Kawameeh Middle School (6-8)
- Five elementary schools (PreK-4), one elementary school (K-4), and one elementary school (Grade 5 only)

Private Schools:

- Deron School (ages 5-21 with disabilities)
- Holy Spirit School (PreK-8)
- St. Michael Parish School (PreK-8)
- The Jardine Academy (ages 3-21 with multiple disabilities)

Public Library:

- Located at 1980 Morris Avenue

Fire Department:

- Over 100 career firefighters and civilians
- Three (3) fire stations

Police:

- Located at 981 Caldwell Avenue

Recreation and Open Space:

- Brookside Park
- Elizabeth River Park
- Esther Egbert Park
- F. Edward Biertuempful Memorial Park
- Friberger Park
- Galloping Hill Golf Course
- Hollywood Memorial Park
- James C. Conlon Soccer Field / Ball Park
- Joe Collins Park / Larchmont Reservation
- Kawameeh Park
- Volunteer / Voorhees Park
- Weber Park



Kean University Campus. Photo Source: media.kean.edu

Web Links:

- Municipal Website: <http://uniontownship.com/>
- Union County: <http://ucnj.org/>
- Public Schools: <http://www.twpunionschools.org/>
- Public Library: <http://www1.youseemore.com/UnionPL>
- Chamber of Commerce: <http://www.unionchamber.com/>