



Union County, New Jersey



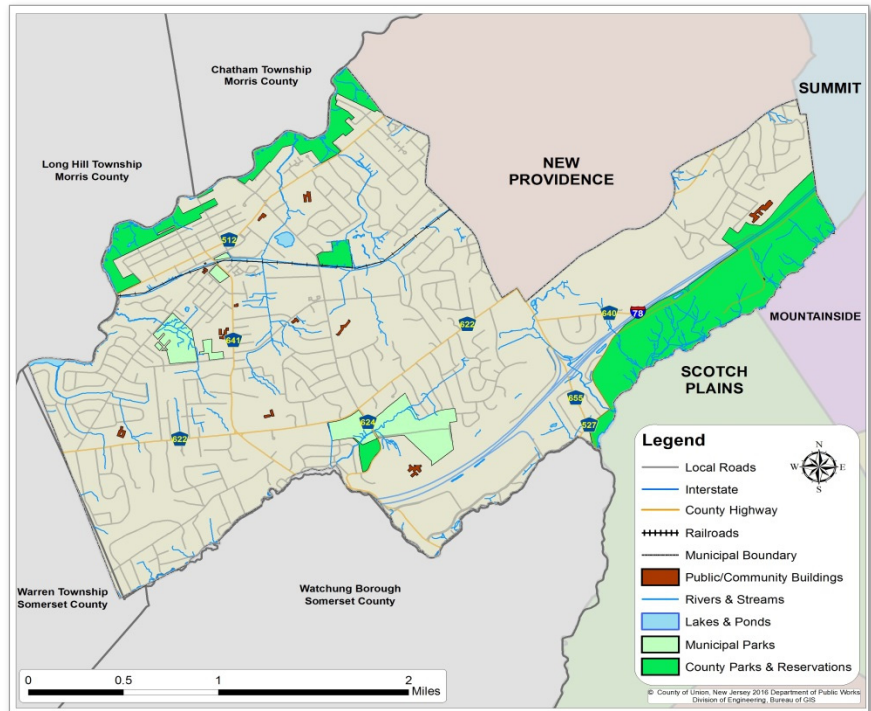
Township of Berkeley Heights

<https://www.berkeleyheights.gov/>

Demographics

Population	13,387
Land Area (sq. miles)	6.21
Per capita income	\$64,256
Percent below poverty	3.7%
Median household income	\$145,724
Median age	45.3
Total housing units	4,630
Median housing value	\$595,600
Average household size	3
Mean travel time to work	37.2
Age 3+ enrolled in school	3,627
Persons per square mile	2,152.1
Unemployment rate	2.5%

Source: US Census Bureau, 2012 - 2016 American Community Survey (5-Year Estimates)



GIS Website to Access High Detail Interactive Map:

<http://ucgis.ucnj.org/UnionCountyGIS/WebPages/Map/FundyViewer.aspx>

History, Location and Highlights

Nestled in the Watchung Mountains, Berkeley Heights offers a desirable residential community that was ranked #6 in “Best Places to Live – America’s Top 50 Small Towns” in 2013 by CNN/Money. The township was incorporated on November 8, 1809 and was originally named New Providence Township. The name was changed by referendum to Berkeley Heights in 1951. The Township of Berkeley Heights is located in the westernmost part of Union County, bordered to the north by New Providence Borough, to the east by Scotch Plains and Mountainside, and to the south and west by Somerset and Morris Counties. The Township of Berkeley Heights is governed by the Mayor/Council form of local government. Berkeley Heights has a six member township council and the mayor is directly elected by the voters. In April 2012, Berkeley Heights was awarded a Silver Level Sustainable Jersey Certification, one of only nine municipalities in the state that have been certified at this level. The township has excellent park and open space resources, including Columbia Park, Passaic River Park (shared with Chatham Township in Morris County to the north) and the Watchung Reservation (shared with Mountainside and Scotch Plains).

Transportation

Route 78, which runs along the southeastern border, is the only major arterial in Berkeley Heights. Many major corporations are located along the Route 78 corridor. County and local roads provide access throughout the municipality. Berkeley Heights is served by the Gladstone Branch of the Morris & Essex Rail Line via Berkeley

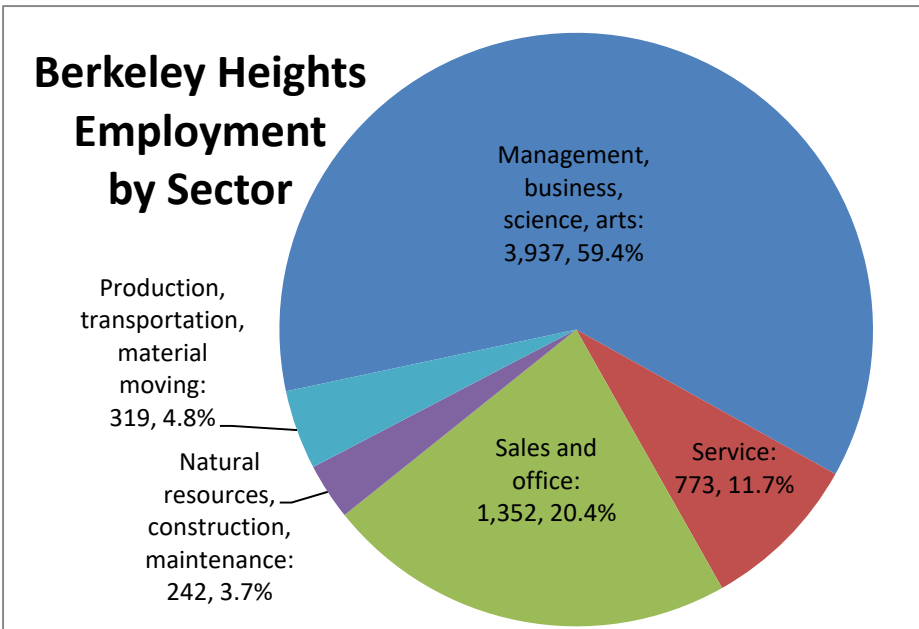


Heritage Square Shopping Center. Source: wikipedia.org

Heights Station located on Sherman and Plainfield Avenue, which provides a one-seat ride to New York Penn Station for commuters. Berkeley Heights is also served by NJ Transit Bus #986. Approximately 81.9% of Berkeley Heights' residents travel to work by private automobile (77.3% drove alone and 4.6% carpooled), and 10.3% use public transportation. 49.6% travel outside of Union County for work, and 15% leave the state. The average commute time for a Berkeley Heights resident is 37.2 minutes.

Housing

Berkeley Heights is a stable residential community, with nearly all of its 4,630 housing units occupied and 95% occupied by owners. 41.1% of the township's housing stock was built prior to 1960, and the median housing value is \$595,600. The median gross rent in Berkeley Heights is approximately \$1,404. The housing development pattern in Berkeley Heights is mainly suburban, with 88% of its housing units classified as single-unit detached, and only 5.2% in three or more unit structures.



Community Facilities & Services

Public Schools:

- Mary Kay McMillin Early Childhood Center (PreK – Grade 1)
- Mountain Park Elementary (2-5)
- Thomas P. Hughes Elementary (2-5)
- William Woodruff Elementary (2-5)
- Columbia Middle School (6-8)
- Governor Livingston High School (9-12)

Health Care:

- Cornerstone Behavioral Health Hospital of Union County
- Summit Medical Group

Police Department:

- Operates 24/7 with 24 full-time officers, 4 full-time dispatchers and civilian support staff

Fire Department:

- 411 Hamilton Avenue

Public Library:

- 290 Plainfield Avenue

First Aid:

- 100% volunteer-run rescue squad

Recreation:

- Municipal and community parks
- Olympic-sized community pool
- Berkeley Swim Club (private)



Memorial Park near the train station. Photo credit: wikipedia.org

Web Links:

- Township of Berkeley Heights: <http://www.berkeleyheightstwpnj.gov/>
- Union County: <http://ucnj.org/>
- Berkeley Heights Schools: <http://www.bhpsnj.org/bhpsnj>
- Chamber of Commerce: <http://www.suburbanchambers.org/>
- Public Library: <http://www.bhplnj.org/>