



[ucnj.org/trailside](http://ucnj.org/trailside)

(908) 789-3670

452 NEW PROVIDENCE ROAD  
MOUNTAINSIDE, NEW JERSEY 07092

A facility of the Union County Department of Parks & Recreation

**UNION COUNTY  
BOARD OF CHOSEN FREEHOLDERS**

**Alexander Mirabella, Chairman**  
**Angel G. Estrada, Vice Chairman**

Angela R. Garretson  
Christopher Hudak  
Kimberly Palmieri-Mouded

Sergio Granados  
Bette Jane Kowalski  
Andrea Staten

**Edward T. Oatman,**  
*County Manager*



**Amy C. Wagner,**  
*Deputy County Manager*

**James E. Pelletiere, R.M.C.**  
*Clerk of the Board*

**Ron Zuber, Director**  
*Department of Parks & Recreation*



# Trailside Nature & Science Center



## Summer 2020

A Service of the Union County  
Board of Chosen Freeholders



**UNION COUNTY**  
*We're Connected to You!*

[www.ucnj.org](http://www.ucnj.org)



The Union County Board of Chosen Freeholders invites you to experience nature at Trailside this summer. Take part in one of the many unique and educational summer camps and family programs. Trailside's location in the scenic Watchung Reservation provides the perfect outdoor classroom to have fun while learning about the natural world around us.

- Pre-first grade programs for 4 & 5-year-old children
- Half and full-day camps for children in 1st-9th grades
- Family programs
- Evening programs
- Wednesday Family Matinees

Fees:

IC = Union County Resident      OC = Out of County Resident



In order to accommodate everyone, please let us know in advance if you or a member of your family has special needs.

**Hours of operation are 12 - 5 PM daily.  
Trailside is closed Saturday, July 4th  
Happy Independence Day!**

## Trailside Sensory Friendly Summer Camp & Retreat Workshop for People with Special Needs August 17 - 21, 2020

Registration begins March 14th at [www.ucnj.org/opdsn-reg](http://www.ucnj.org/opdsn-reg)

Program Cost: Free

The Trailside Sensory Friendly Summer Retreat Workshop is appropriate for individuals who are between the ages of 18 - 36.

The Trailside Sensory Friendly Summer Camp is appropriate for children who are between the ages of 12-17.

### Eligibility Requirements For All Participants

- Have a documented disability
- May require additional supports, modifications, accommodations to participate and learn.
- May require prompting or re-direction to stay on-task.
- Does not engage in threatening or aggressive behaviors.
- Are able to independently use the toilet.

The Trailside Sensory Summer Camp Program is *not* appropriate for campers who:

- Have a history of fleeing or aggressive/threatening behavior.
- Require restraints to help stop behaviors.
- Cannot independently use the toilet.

**Please note:** Application does not guarantee entry to the workshop or camp. Initial application will be online, followed by an in-person interview prior to acceptance to the program.



**For more information or any questions, please contact**  
Union County Office for Persons with Disabilities and Special Needs  
at 908-527-4781 or [opdsn@ucnj.org](mailto:opdsn@ucnj.org)

## Summer Nature Retreat Workshop for Adults with Special Needs

August 17 - 21, 2020

9:00 AM - 2:00 PM

Ages 18 - 36



Register  
March 14th

Get outdoors and have fun learning basic survival skills such as shelter making, tracking and fire building. Each day will spend time outside in nature's classroom. Meet live animals, learn to read trail blazes & listen to music around a campfire.

## Sensory Friendly Summer Camp for Kids with Special Needs

August 17 - 21, 2020

9:00 AM - 2:00 PM

Group 1: Ages 12 - 14

Group 2: Ages 15 - 17

Register  
March 14th

Spend a week investigating the natural world using your senses of sight, sound, smell and touch. Experience Trailside's Sensory Friendly Trail and enjoy learning about the plants and animals that live in the Watchung Reservation, Union County's largest park. Develop an appreciation for the natural world through nature walks, hands-on activities, interactive games, scavenger hunts, arts & crafts, stories, live animals, a campfire and yoga. Meet live animals, spend time outside each day and experience all the beauty that nature has to offer.



## Summer Camps & Family Programs

Register at [ucnj.org/trailside](http://ucnj.org/trailside)



**Begins March 7th at 9:00 AM  
for Union County Residents**

If you do not have an account, we highly recommend you create one prior to Saturday, March 7th. Include all family members.

In-person registration is welcome at the Trailside Visitor Center on March 7th from 9:00 AM - 4:00 PM. Cash and credit cards only. Non-county residents may register March 9 at 9:00 AM.

***Please Read All General & Cancellation Policies  
Before Registering.***

**General Policies**

1. You may only register family members in your household.
2. Program spaces are non-exchangeable & non-transferable.
3. In developing programs, Trailside keeps in mind the abilities of different aged children. Please pay attention to age guidelines when registering. If an inappropriately aged child attends a camp, the child will be removed and no credit or refund issued.
4. ***Children enrolled in the Pre-First Grade programs MUST be four (4) years of age BY JUNE 1, 2020.***
5. Children enrolled in the Pre-First Grade programs are not permitted to take a morning and afternoon session during the same camp week.

**Cancellation Policies**

1. Refunds will be given from March 9th to May 31st with a non-refundable registration fee of \$35 charged for *each* pre-first grade camp and *each* half-day session of camp.
2. We are unable to process refunds directly to credit cards. Call Trailside for refund procedures.
3. Credits or refunds will not be given at ***any*** time for Friday Family or Tuesday Evening programs. Trailside credits will only be issued for an evening or family program *cancelled by Trailside due to inclement weather.*

**Waitlist**

As camps and family programs fill, a waitlist option is available online for each program. There is no charge to place a name on the waitlist. Participants will be called from waitlists as space becomes available.

**EVENING FAMILY PROGRAMS**



Programs are held rain or shine unless the weather is severe. Please call Trailside to find out if a program has been cancelled due to inclement weather.

**Programs are recommended for adults  
with children ages six & older.**

**EVENING POND SEARCH** - Join us at Seeley's Pond as we search for aquatic life as the sun goes down. Use dip nets and strainers to catch, identify and release frogs, fish, insect larvae and tadpoles. ***Wear:*** Shoes that can get wet and muddy. ***Meet at:*** Seeley's Pond upper paved parking lot.

**FLASHING FIREFLIES** - Fireflies are a familiar sight in the summer. There is nothing more magical than watching the night sky light up with their flashes. Find out fascinating facts about these beautiful beetles. Take a walk along a wooded path in search of these glowing insects.

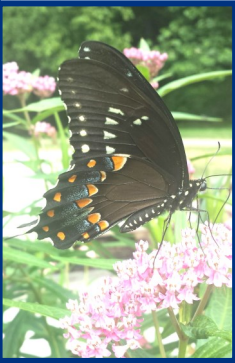
**MOONLIGHT HIKE** - The July full moon is known as the Thunder Moon and the August full moon is called the Sturgeon Moon. Find out how these full moons got their names and enjoy an evening moonlight walk. Search for nocturnal animals such as raccoons, bats, opossums and flying squirrels.

## FRIDAY FAMILY PROGRAMS

Please Refer To The Family Program Chart  
For Family & Evening Program Dates, Times & Fees.

Programs are held rain or shine unless weather is severe.  
The four programs below are for all ages. **Babies in backpacks.**

**BUBBLEMANIA** - Big bubbles! Bubble towers and bubble bunches! Little kids can bubble to their heart's content while "big kids" try bubble challenges. Can you make a square bubble? How about bubbles within bubbles? **Wear:** bathing suit/clothes that can get wet.



**BUTTERFLIES, BIRDS & BUGS** - Have fun visiting the many gardens around Trailside in search of these important animals. Look for hummingbirds, milkweed beetles, swallowtail butterflies and more. Find out how these animals help the environment.

**NATURE BINGO** - Enjoy a seasonal walk through the Watchung Reservation in search of butterflies, flowers, singing birds and animal tracks. Work with your family to see how many natural items you can find on your bingo card.

**TURTLE TIME** - Discover what turtles eat, where they live, and how they survive in the wild. Take a walk to look for turtle habitats and meet live turtles from Trailside's collection.

\*\*\*\*\*

*The following family programs offer a slightly strenuous hike to the collecting site. They are recommended for adults with children ages six and older.*

**POND SEARCH** - Use Trailside's strainers and dip nets to sample aquatic life at Seeley's Pond. Gently catch and identify frogs, fish, tadpoles and aquatic insects before releasing your catch back to their home. **Meet:** Seeley's Pond paved parking lot. **Wear:** Shoes that can get wet and muddy.

**STREAM STROLL** - Beat the heat as you search the babbling brook for crayfish, salamanders and aquatic insects. Carefully collect, identify & release these tiny creatures & learn how they help predict the health of the stream. **Meet:** TMA Field (behind old museum)  
**Wear:** Shoes that can get wet.

# Trailside Matinees

Summer entertainment series for families featuring  
Science, Dinosaurs, Storytelling & Live Animals

*Wednesdays at 1:30 pm*

- July 8**      **Outrage-hiss Pets**  
See live animals from all over the world up close.  
Learn what these creatures eat & where they live.
- July 15**     **Dragons: Return of the Ice Sorceress**  
Take a daring journey with the *Story Tellers* to  
release dragons and save the kingdom. Science  
experiments will add awesome special effects.
- July 22**     **Super Circus Stuff**  
Pure, fun, family entertainment! Join Mr. Fish for  
circus routines full of audience participation.  
Enjoy juggling, balancing, boomerangs & bubbles.
- July 29**     **Rizzo's Reptile Discovery**  
Blending nature and conservation, this program  
features live lizards, snakes, turtles & an alligator!
- Aug. 5**      **Dino Man**  
Merry mayhem and magnificent props are sure to  
delight all ages. Take a trip through the Mesozoic  
era while learning about dinosaurs and fossils.
- Aug. 12**     **Fire & Ice**  
Watch as the Mad Scientist uses dry ice to shower  
volunteers with clouds and bubbles, and creates a  
spooky fog. Discover how slime is created.

**Admission:** \$5.00/person    \$4.00/senior citizen (62 & older)  
Recommended for families ages 4 & up.

Tickets go on sale at 1:00 pm

No strollers please.

## PRE-FIRST GRADE CAMP PROGRAM CHART

### For children ages 4 and 5

Classes meet Monday through Thursday.

*Children enrolled in the Pre-First Grade programs  
MUST be four (4) years of age BY JUNE 1, 2020.*

#### SESSION TIMES:

**A = 9:15 AM - 11:45 AM      B = 1:15 PM - 3:45 PM**

**FEES: IC \$ 100 / A or B      OC \$120 / A or B**



1. June 22 - 25	A: ABC's of Science & Feathered Friends	B: Seasonal Surprise & Dinomite
2. June 29- July 2	A: Going Buggy & Animal Crackers	B: Sense-sations & Astro-nuts
3. July 6-9	A: Animal Adventures & Nature in a Nutshell	B: Turtle Time & Under the Sea
4. July 13-16	A: Sense-sations & Astro-nuts	B: Prehistoric Pals Wet-n-Wild
5. July 20-23	A: Seasonal Surprise & Dinomite	B: Going Buggy & Animal Crackers
6. July 27-30	A: Turtle Time & Under the Sea	B: Sense-sations & Astro-nuts
7. Aug. 3-6	A: Prehistoric Pals & Wet-n-Wild	B: Animal Adventures & Nature in a Nutshell
8. Aug. 10-13	A: Going Buggy & Animal Crackers	B: ABC's of Science & Feathered Friends

## FAMILY PROGRAM SCHEDULE

Friday Family programs held rain or shine unless weather is severe.

**FEES:** IC: \$7/person      OC: \$8/person

WEEK	TUESDAY EVENING	FRIDAY FAMILY	
1. June 22-26	<b>June 23</b> Flashing Fireflies 8 - 9 PM	<b>June 26</b> Bubblemania 10 - 11 AM	<b>June 26</b> Nature Bingo 10 - 11 AM
3. July 6 -10	<b>July 7</b> Moonlight Hike 8 - 9 PM	<b>July 10</b> Pond Search 10 - 11 AM	<b>July 10</b> Butterflies, Birds... 10 - 11 AM
4. July 13-17	<b>July 14</b> Pond Search 7:30-9 PM	<b>July 17</b> Stream Stroll 10 - 11 AM	<b>July 17</b> Turtle Time 10 - 11 AM
5. July 20-24	<b>July 21</b> Flashing Fireflies 8 - 9 PM	<b>July 24</b> Bubblemania 10 - 11 AM	<b>July 24</b> Nature Bingo 10 - 11 AM
6. July 27-31	<b>July 28</b> Pond Search 7:30-9 PM	<b>July 31</b> Pond Search 10 - 11 AM	<b>July 31</b> Butterflies, Birds... 10 - 11 AM
7. Aug. 3-7	<b>Aug. 4</b> Moonlight Hike 8 - 9 PM	<b>Aug. 7</b> Stream Stroll 10 - 11 AM	<b>Aug. 7</b> Turtle Time 10 - 11 AM
8. Aug. 10-14		<b>Aug. 14</b> Bubblemania 10 - 11 AM	<b>Aug. 14</b> Nature Bingo 10 - 11 AM
2. No family programs June 29 - July 3			

**FOR STUDENTS ENTERING 7<sup>th</sup> - 9<sup>th</sup> GRADES**

**NATURE TREKS** - The 2060-acre Watchung Reservation offers over 13 miles of hiking trails. Through engaging activities and opportunistic hikes, participants will have fun learning how to identify trees, plants, wildlife and rocks while investigating this pristine region. Hike to seldom visited areas of the Reservation. Discover the art of tracking, try your hand at creating a plaster animal track and practice sketching nature. Wear sturdy shoes. Campers may be on the trail for much of the day. Please bring a backpack with your lunch in an insulated pack, two snacks & a refillable water bottle.



**PRE-FIRST GRADE PROGRAMS**

**For children ages 4 and 5**

Sign up your child for these **4-day (Monday-Thursday)** workshops. Each 2½ hour workshop includes two programs and a ½ hour supervised break. Children must be four by June 1, 2020.

Children may register for a morning “A” or afternoon “B” session. **Pre-first grade children may not take a morning and an afternoon session during the same week.** Children should bring a snack and beverage for the break.

***Please Refer To The Camp Program Chart For All Dates, Times & Fees***



**PREHISTORIC PALS**

Investigate the many ancient mammals, birds, fish, reptiles, insects and amphibians that lived alongside dinosaurs. Find out interesting facts about megalodon sharks, saber-toothed cats, giant dragonflies, elephant birds and more. Have fun comparing these primitive creatures to animals we know today.

**WET - N - WILD**

Get ready for some splish-splashing fun as we learn about the wonders of water and wetland habitats. Discover the diversity of life that is found in streams and ponds. Through interactive, hands-on activities, find out why water and wetland habitats are important to plants, animals & people.

\*\*\*\*\*

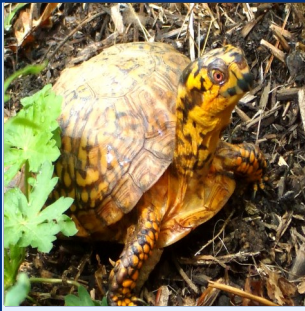
**GOING BUGGY**

Come to “bug haven” and scoop up some of those 6-legged creatures called insects. Through stories, games, explorations and crafts, find out fascinating facts about hoppers, climbers, crawlers & flyers.

**ANIMAL CRACKERS**

Become an animal detective and use your senses to uncover clues animals have left behind. Search for camouflaged critters, animal homes and foot prints. Listen carefully and learn to identify birds, insects and frogs by the sounds they make.

*Continued...*



### **TURTLE TIME**

Discover the unique adaptations turtles have that allow them to live in the woods, lakes, oceans and deserts around the world. Take a walk to look for turtles, see how big you are compared to the largest sea turtle, practice moving like a land tortoise, read stories and have fun making turtle crafts. Each day, meet live turtles from Trailside's reptile collection.

### **UNDER THE SEA**

Discover why oceans are special and find out which animals live in "Nemo's neighborhood." Learn interesting facts about sharks, whales and sea turtles through games, songs, crafts and hikes.

\*\*\*\*\*

### **SEASONAL SURPRISE**

Explore a different season each day as we investigate winter snowflakes, spring flowers, summer sunshine and autumn leaves. Each season brings new opportunities to discover nature through crafts, games and hikes.

### **DINOMITE**

Travel back through a special dinosaur time tunnel to the days of the "terrible lizards." Become a paleontologist and uncover your own "fossils" to take home. Work as a group to reassemble a dino skeleton. Have fun learning about your favorite dinosaurs through games, crafts & imagination walks through the Reservation.

\*\*\*\*\*

### **ANIMAL ADVENTURES**

Through crafts, books and imagination walks have fun learning about interesting animals and their habitats. Use your imagination to visit Africa in search of lions and rhinos. Enjoy a story about tropical rainforests and travel to Australia to see kangaroos and koalas. Brave the cold of Antarctica and make a penguin craft to take home.

### **NATURE IN A NUTSHELL**

Find the largest tree, the smallest bird, an orange rock and a purple flower. Count butterflies in the garden, petals on a flower and tracks in the sand. Discover how animals use color for camouflage and have fun investigating shapes, sizes, patterns and numbers in nature.

*Continued.....*

## **FOR STUDENTS ENTERING 5<sup>th</sup> & 6<sup>th</sup> GRADES**

**ALL ABOUT ANIMALS** - Take an in-depth look into the animal kingdom. Find out interesting facts about mammals, reptiles, amphibians, birds, fish and insects. Meet live snakes, turtles, frogs and fish. Hike to different areas of the Reservation and use binoculars, sweep nets, dip nets and field guides to identify the variety of wildlife inhabiting the Watchung Reservation. Meet live animals with a visit from **Rizzo's Reptiles**.

**BACKWOODS LORE** - Learn how to identify plants that are safe to eat, build an emergency shelter that can keep you warm and dry and follow a course using only a map and compass. Find out how to identify and track local wildlife and see what it takes to get a fire going without matches! Are you ready for the challenge?

**GREEN TEAM** - Make a solar cooker, play energy games, recycle and re-design a worn out t-shirt using tie dye. Throughout the week participate in fun-filled activities that demonstrate the importance of energy conservation and experiment with solutions to help clean up our waterways. Find out ways of living a greener lifestyle that will help keep the Earth healthy.

**NATURALLY ARTISTIC** - The beauty of nature has inspired many artists. Explore the world of visual arts with Trailside's very own, talented exhibit artists. Enjoy using mixed media such as acrylics, charcoal, water colors and clay to create your own masterpieces. From realistic to abstract, have fun as you try your hand at different forms of art.



**JUNIOR NATURALIST** - Learn about the plants and animals living in and around water; develop a heightened awareness about the importance of conserving and preventing the pollution of this natural resource. Using dip and seine nets, capture and release aquatic insects, fish, frogs, toads and salamanders. Keep a journal of the number & types of plants and animals found in these areas.

**LIFE IN COLD BLOOD** - Take an in-depth look into the world of reptiles and amphibians. Find out important facts about these fascinating creatures and search for them each day at different sites in the reservation. Enjoy a visit from **Rizzo's Reptiles** and meet some live animals up close and personal. Discover what adaptations help these cold blooded animals survive.

**MAGICAL & NATURAL MARVELS** - Prepare to have fun in this entertaining camp based on ideas from the popular "Harry Potter" series of books. Enjoy learning about medicinal and useful plants (herbology), chemistry experiments (potions), transfiguration (metamorphosis) and exploring the solar system (astronomy). Investigate habitats suitable for natural creatures such as owls and salamanders.

**TRAILSIDE TREKS** - Join a Trailside Naturalist for a series of challenging excursions to sites in the Watchung Reservation. Hike to Lake Surprise, the Deserted Village of Feltville/Glenside Park, Watchung Stables, the ravine & the highest point in the Watchung Reservation. Wear sturdy shoes; bring a backpack with a water bottle and snack.



### ABC's of SCIENCE

Budding scientists will experiment with **A**stronomy, **B**otany, **C**hemistry and the marvels of magnets. Participants will visit the planets on an imaginary trip through space, investigate the life cycle of plants, create a painting using magnets and experiment with kitchen ingredients including baking soda, vinegar and soap.

### FEATHERED FRIENDS

Penguins, ducks, owls and cardinals all look very different, but they also share many common traits. Find out what makes birds different from other animals and learn to identify some common birds by shape, size, color and sound. Use binoculars to see birds close up. Help take care of the bird feeding station and learn how to encourage birds to visit your house too!

\*\*\*\*\*

### SENSE - SATIONS

Investigate the natural world through the senses of sight, sound, smell and touch. Learn how hawks use their eyes to spot food and try your "paws" at fishing like a raccoon. Play bat and moth to find out how bats use their ears to find food and discover how fox use their sense of smell to locate prey. Make a fox craft to take home.

### ASTRO-NUTS

Discover what it takes to become an astronaut. Use your imagination to visit Trailside's "space station" to get an up close look at planets, stars, galaxies, moons, meteors and more. Make your own rocket ship and have fun learning all about space.



# CAMP PROGRAM CHART

## 1st-9th GRADES

**Classes Meet Monday through Friday**

### Session Times

**A: 9 AM - 12 PM                      B: 1 PM - 4 PM**

**A & B Combination: 9 AM - 4 PM**

**FEE:** Single Session Rate: IC \$165 / **A or B**  
OC \$210 / **A or B**

\*Combination Rate: IC \$330 / **A & B**    OC \$420 / **A & B**

\*Combination rates **A & B** include a ½ hour lunch & ½ hour free time.

Week	Grade	Program Combinations	
1. June 22-26	1st-2nd	A: Down & Dirty	B: Wanishi, Wigwams
	3rd-4th	A: Birds of a Feather	B: Extreme Earth
2. June 29 - July 3	1st-2nd	A: Mythical Creatures of Field & Forest	B: Nature Discovery Club
	3rd-4th	A: Junior Naturalist	B: Magical & Natural Marvels
	5th-6th	A: Green Team	B: Backwoods Lore
3. July 6-10	1st-2nd	A: Tropical Treasures	B: Around the World
	3rd-4th	A: Bugs & Beyond	B: Trailside Treks
4. July 13-17	1st-2nd	A: Nature's Olympians	B: Seasonally Artistic
		A: Have a Habitat	B: Feather, Fur & Scales
	3rd-4th	A: Art of Nature	B: Life in Cold Blood
	5th-6th	A: Naturally Artistic	B: All About Animals

## FOR STUDENTS ENTERING 3<sup>rd</sup> & 4<sup>th</sup> GRADES

**ART OF NATURE** - Discover art in nature through sketches, painting and storytelling. Appreciate the natural world as you create masterpieces using rocks, clay and water. Spend time with the Rutgers Master Gardeners of Union County & explore the diversity of plants, flowers and trees.



**BUGS & BEYOND** - Did you know that insects represent over 90% of all living things on the earth and that a honeybee can travel up to 60 miles in one day to collect food? Build a spider web, play the monarch migration game and discover why bugs are important to people and the environment. Spend time in the Demonstration Garden with Rutgers Master Gardeners of Union County. Use sweep nets and magnifiers to investigate the diversity of insect life found in the gardens. Visit stream, pond, meadow and forest habitats to learn about the adaptations and lifecycles of these amazing creatures.

**BIRDS OF A FEATHER** - Explore the diverse world of birds and discover what makes them unique in the animal kingdom. Find out about different bird groups and the characteristics that make them different from one another. Explore some of the finer points of bird identification and start your own life list of bird sightings.

**EXTREME EARTH** - Through hands-on experiments, explore the reasons for Earth's natural disasters. Understand the science behind avalanches and earthquakes and investigate the causes and effects of tsunamis, tornadoes and volcanoes. Learn about the three lava flows in the history of the Watchung Reservation and collect rocks that help tell the story. Discover the differences between rocks, gems and minerals. Learn to use Mohs scale of hardness, find out why minerals fluoresce and excavate for "fossils."

*Continued....*

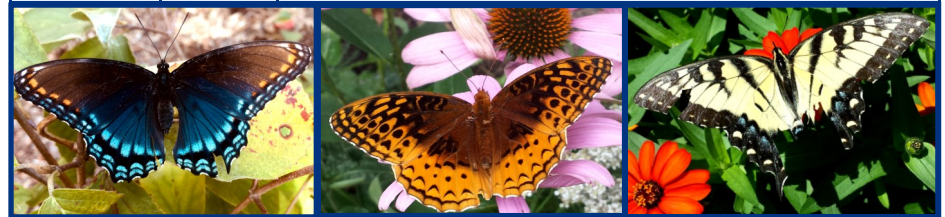
**SEASONALLY ARTISTIC** - Have fun seeing the many ways nature can influence art and find out which season inspires *you* the most! Through the tools that nature provides, discover new realms of your creativity. Use pine needles to paint a winter scene, let flowers be your inspiration for a springtime watercolor painting and harness the sun's rays for a summertime solar printing.

**TROPICAL TREASURES** - Imagine a place that is hot and humid, where it rains over 200 inches a year and the greatest variety of plants and animals are found. This unique treasure is the tropical rainforest. Discover who lives in the different layers of these fascinating forests, create your own tropical bromeliad plant and butterfly ring. Find out why this valuable resource is disappearing. Learn what we can do to help.

**WANISHI, WIGWAMS & WAMPUM** - Use your imagination to see what it was like to live as a Native American child. Touch real tools and animal skins, visit a wigwam and play games like corn darts. Listen to stories, work with clay and learn how the Lenape Native Americans survived in the wilderness.



Week	Grade	Program Combinations	
5. July 20-24	1st-2nd	A: Arctic, Ocean & Desert	B: Around the World
		A: Mythical Creatures of Field & Forest	B: Down & Dirty
	3rd-4th	A: Trailside Treks	B: Magical & Natural Marvels
	7th-9th	Nature Treks	
6. July 27-31	1st-2nd	A: Seasonally Artistic	B: Feather, Fur & Scales
		A: Wanishi, Wigwams	B: Have a Habitat
	3rd-4th	A: Birds of a Feather	B: Life in Cold Blood
	5th-6th	A: Naturally Artistic	B: All About Animals
7. Aug. 3-7	1st-2nd	A: Arctic Ocean & Desert	B: Nature's Olympians
	3rd-4th	A: Bugs & Beyond	B: Extreme Earth
8. Aug. 10-14	1st-2nd	A: Around the World	B: Tropical Treasures
		B: Nature Discovery Club	B: Mythical Creatures of Field & Forest
	3rd-4th	A: Art of Nature	B: Junior Naturalist
9. Aug. 17-21	Ages: 12 - 14	Sensory Camp for Kids with Special Needs 9:00 AM - 2:00 PM	
	Ages: 15 - 17	Sensory Camp for Kids with Special Needs 9:00 AM - 2:00 PM	
	Ages: 18-36	Nature Retreat for Adults with Special Needs 9:00 AM - 2:00 PM	



## **HALF AND FULL DAY CAMPS FOR CHILDREN ENTERING 1ST-9TH GRADES**

The following **5-day (Monday - Friday)**, 3-hour programs may be combined for a full-day camp. Full-day combo sessions include a ½ hour lunchtime and a ½ hour of supervised free time which includes outdoor activities, weather permitting.

*Please refer To The Camp Program Chart  
For All Dates, Times & Combination Camps.*

Children in a full-day combination session must bring lunch in an insulated lunch bag. All children in a half or full-day session should bring a snack and drink for EACH camp session daily.



### **FOR STUDENTS ENTERING 1<sup>st</sup> & 2<sup>nd</sup> GRADES**

**ARCTIC, OCEAN & DESERT** - Take an imaginary journey to some of the worlds most extreme habitats. Find out how animals such as arctic fox and polar bear survive the sub-zero temperatures of the arctic while camels and armadillos thrive in the heat of the desert. Learn about the ocean and its inhabitants and “go spelunking” in caves to discover which animals occupy this unique environment.

*Continued.....*

**AROUND THE WORLD** - Become a world explorer and travel to different continents each day. Learn about amazing animals that live in the Rocky Mountains, creep through the Amazon rainforest, run in the African deserts and inhabit the outback “down under.” Each day we will hike a trail, map out an adventure and keep a pictorial record of our discoveries.

**DOWN AND DIRTY** - Investigate the world beneath your feet. Sample soil and look for signs of animals that live underground: the earthworm, chipmunk, groundhog and others. Search for artifacts on an archeological dig and gain a better understanding of soil and rocks through experiments and geology hikes.

**FEATHER, FUR & SCALES** - Have fun learning about birds, mammals, reptiles & amphibians as we explore the fascinating world of the animal kingdom. Investigate the different habitats of the Watchung Reservation in search of our animal neighbors, their homes & hideouts. Meet live animals from around the world with guests from *Rizzo’s Reptiles*.

**HAVE TO HAVE A HABITAT** - Food, water, shelter and space are necessary for all animals to survive. Discover the diversity of animals that live in the forest and use sweep nets in the meadow to catch, identify and release insects. Investigate nearby wetlands in search of frogs, salamanders and aquatic insects. Through crafts, games and hands-on activities, have fun exploring nature.

**MYTHICAL CREATURES OF FIELD & FOREST** - Use your imagination to explore the woods as fairies, elves or gnomes. Through art projects, stories and hikes, participants will enjoy a world of make-believe set within the natural world.

**NATURE DISCOVERY CLUB** - Have fun visiting different habitats to discover the diversity of insect life found in the Watchung Reservation. Use sweep nets in the meadow, dip nets at the lake and special collecting jars in the forest to safely catch, identify and release crickets, beetles, ants, water scorpions and more.

**NATURE’S OLYMPIANS** - Discover who is the fastest flier, strongest swimmer, highest jumper & quickest sprinter as we explore nature’s most extreme athletes. Through active games, hikes & experiments, campers will find out who are our nature’s champions.

*Continued.....*