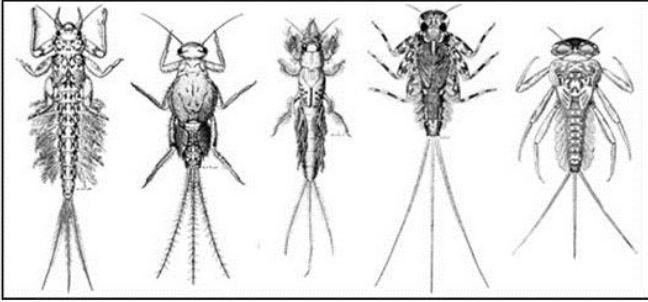


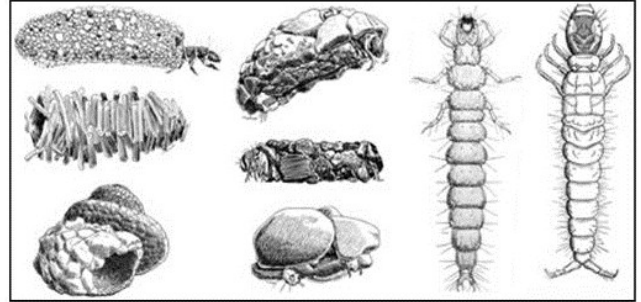
BIOTIC INDEX

Group One Taxa

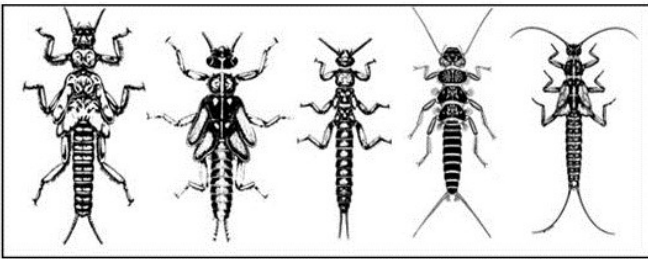
Pollution sensitive organisms found in good quality water, index value is 3.



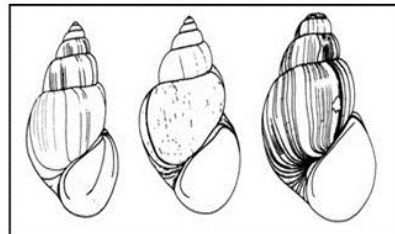
Mayflies



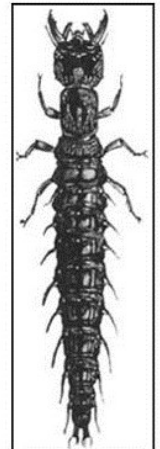
Caddisflies



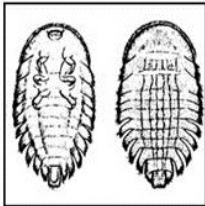
Stoneflies



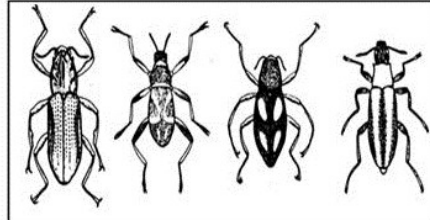
Gilled Snails



Dobsonflies



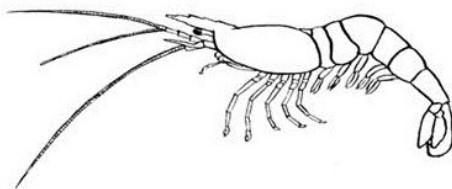
Water Pennies



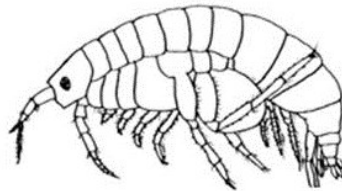
Riffle Beetles

Group Two Taxa

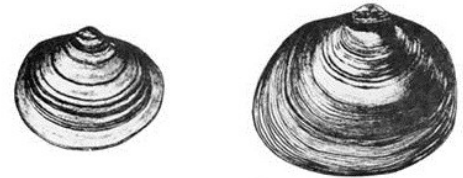
Somewhat pollution tolerant organisms that can be found in good or fair quality water, index value is 2.



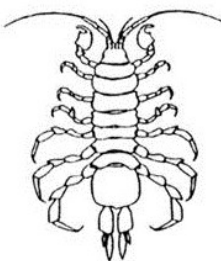
Crayfish / Crawdad



Scud / Sideswimmer



Clams



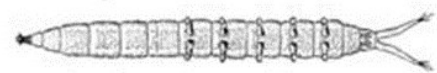
Sowbug



Beetle larvae



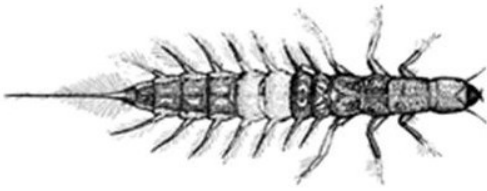
Crane fly larva



Watersnipe larva

Group Two Taxa

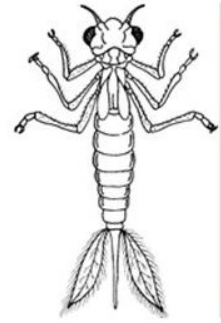
Somewhat pollution tolerant organisms that can be found in good or fair quality water, index value is 2.



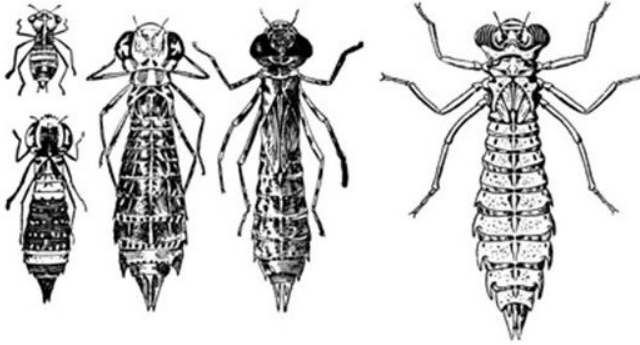
Alderfly larva



Fishfly larva



Damselfly nymph



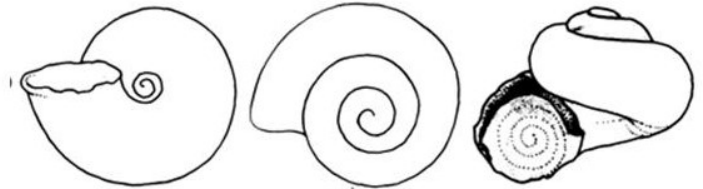
Dragonfly nymphs

Group Three Taxa

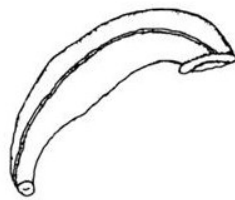
Pollution tolerant organisms that can be in any quality water, index value is 1.



Aquatic worms



Other snails



Leech



Pouch snails and Pond snails



Blackfly larva



Midgefly larva