

The Union County Board of
County Commissioners Presents

Four Centuries *in a* Weekend 2023



Tour Union County's historic sites

**Saturday, October 21
& Sunday, October 22
12–5 pm**

FREE ADMISSION



Activities listed are accurate at time of printing.
Visit www.ucnj.org/4c for the latest updates, including
newly added activities, or contact the individual sites.

www.ucnj.org



A Service of the Union County
Board of County Commissioners

Union County
We're Connected to You!

Tours, Exhibits & Special Events

Unless noted otherwise, historic sites are open Saturday, October 21 and Sunday, October 22, from 12 noon to 5 pm.

Most sites offer collectible Union County history trading cards. All sites offer the **Union County Passport** — pick one up to have stamped at each site you visit.



★ This symbol designates a site within the National Park Service's Crossroads of the American Revolution National Heritage Area, offering a unique stamp for the **Passport to Your National Parks** booklet.

Berkeley Heights

Deserted Village of Feltville / Glenside Park ★

1 Cataract Hollow Rd., Berkeley Heights
908-527-4900 | www.ucnj.org/dv

- Guided tours of the Village (or self-guided)
- Visit the general store and museum; a wood bas-relief sculpture carved in 1927 by Nicaraguan artist Roberta de la Selva is on view
- Hayrides
- Apple cider pressing
- For kids: archaeological activity and old-fashioned children's games
- Quill pen writing
- Meet characters from the Village's past, including Feltville founder David Felt, Revolutionary War soldier John Willcocks, resort owner Warren Ackerman, school teacher Sarah Felt Toby, and farmhand Moses Price, as well as the research team of historians and archaeologists



Most historic buildings and activities in the Deserted Village are wheelchair-accessible, but are spread out over a large, hilly area. From the main parking lot, a wheelchair-accessible hay wagon will transport visitors throughout the site, with stops at major buildings. A golf cart will be available on site to transport visitors who are ambulatory but mobility challenged. Wheelchair-accessible parking is also available near the Church/Store.

Attendants at the entrance on Cataract Hollow Road will direct visitors to parking; please inform attendant of any accommodations needed for people with disabilities.

Clark

Dr. William Robinson Plantation Museum ★

593 Madison Hill Rd., Clark
732-340-1571 | www.DrRobinsonMuseum.org

- Tour this 3-floor historic building for a glimpse of life here during the 1690s
- Open-hearth cooking and other demonstrations
- Gift shop
- Herb garden features plants considered medicinal



First floor of building is wheelchair-accessible. Video shown on the first floor gives a virtual tour of the basement and attic levels. Street parking available.

Crane-Phillips House Museum

124 North Union Ave., Cranford
908-276-0082 | www.cranfordhistoricalsociety.org

- Guided tours of this Civil War veteran's cottage that shows the modest life of a veteran's family during the Victorian era
- Celebrating the 70th anniversary of the Cranford First Aid Squad, with volunteers from the First Aid Squad on hand, and an ambulance for visitors to view its many features



Museum building and bathroom are wheelchair-accessible, except the second floor, which can be seen on a video shown on the first floor.

Park in the Police Dept. Lot (behind museum) or the nearby municipal lot.

William Miller Sperry Observatory

Union College, 1033 Springfield Ave., Cranford
908-709-7000 | www.asterism.org

- Tours of Sperry Observatory led by members of Amateur Astronomy Inc., followed by Q&A sessions — two of the largest telescopes in the eastern United States are here
- Observatory domes will be open, weather permitting, however the large telescopes are not used for viewing during daylight hours

Observatory classroom is wheelchair-accessible.

Sperry Observatory is located near the back of Union College campus, between Springfield Ave. and Gallows Hill Rd. Ample parking in campus lots, including spaces near the Observatory.



Elizabeth

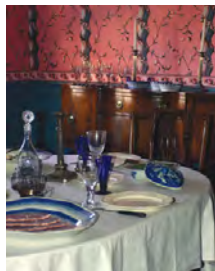
Boxwood Hall State Historic Site ★

1073 E. Jersey St., Elizabeth | 908-282-7617
www.nj.gov/dep/parksandforests/historic/boxwoodhall.html

- Guided tours of this 18th-century residence describe the events and people connected with this site, including George Washington — who dined here on the day he was inaugurated as our first President

First floor is wheelchair-accessible via the back entrance.

Parking available behind the building (via driveway between Boxwood Hall and Efficiency Inn).



Elizabeth Public Library

11 S. Broad St., Elizabeth
908-354-6060 | www.elizpl.org

Open Saturday only. Closed Sunday.

- Tour this historic gem — the last remaining active Carnegie Library in Union County. 30-minute tours run between 12 pm and 3:30 pm (last tour begins 3:30 pm), provided in English and Spanish. Learn about the architects who designed this library: one designed the first phase of Ellis Island; the other was a prolific architect whose designs were built throughout Union County.
- Exhibit: “Hauntings of Union County”



Library building is fully ADA-compliant.

Free and secure parking available on site. Library lot has designated wheelchair-accessible parking spots.

Nathaniel Bonnell Homestead & Belcher-Ogden Mansion ★

1046 East Jersey St., Elizabeth | 908-581-7555

- Tours of these buildings provided by the Historic Society of Elizabeth, in English and Spanish
- Use picnic tables in the back yard of Belcher-Ogden for litter-free carry-in lunch
- More information on Instagram @HistoricalElizabethNJ and Twitter @HistElizabethNJ

First floor of Belcher-Ogden building is wheelchair-accessible.

Parking lot on site at Bonnell Homestead, 1045 East Jersey St.



Elizabeth

Siloam Hope First Presbyterian Church & Snyder Academy ★

42 Broad St., Elizabeth | 908-353-2131

- Tours of the historic Revolutionary-era cemetery and grounds (meet at the church) — with gravesites spanning four centuries, including where 313+ free and enslaved African people are buried in unmarked graves
- Information about the 313 Ancestors Speak project
- Historical museum at Snyder Academy features Revolutionary War artifacts, and audio-visual presentations about the history of this site, where Alexander Hamilton once attended school



Sunday only: 12–4 pm:

- American Revolution reenactors

Church building is wheelchair-accessible via ramp at the entrance. Snyder Academy is wheelchair-accessible by elevator located on the Caldwell Ave. side (north side) of the building.

Convenient parking available at the parking garage on Caldwell Place, across from Snyder Academy.

Fanwood

Historic Fanwood Train Station Museum

230 North Ave., Fanwood
908-322-8236 | www.fanwoodnj.org

Open 12–4 pm both days

- Museum features local history, with a focus on rail service through the years
- Exhibit of quilts from the Victorian era through the 20th century, including a quilt made for the 1976 U.S. Bicentennial, adorned with Fanwood landmarks



Hillside

Evergreen Cemetery

1137 North Broad St., Hillside | 908-352-7940

- Pick up a booklet at Woodruff House for a self-guided tour of this historic cemetery and its elaborate funerary monuments

Hillside

Woodruff House, Eaton Store Museum ★ & Phil Rizzuto All Sports Exhibit

111 Conant St., Hillside
908-353-8828 | www.woodruffhouse.org

- Tours of Woodruff House (dating to 1735) and Eaton Store (dating to 1900) and their period furnishings
- Visit the barn to see the Phil Rizzuto All Sports Exhibit of memorabilia from local baseball legend Phil Rizzuto
- In homage to the Woodruff orchards, Mini Apple Fest includes the sale of fresh apples, cider, apple turnovers, apple-cider donuts and more
- Vintage automobile on display
- Pick up a brochure with map to take a self-guided tour of nearby historic Evergreen Cemetery

Street parking available.



Mountainside

Deacon Andrew Hetfield House ★

Constitution Plaza, Watchung Ave., Mountainside
908-789-9420 | www.mountainsidehistory.org

- Ongoing tours of this circa-1760 house
- Special exhibits throughout this Revolutionary War-era site
- John Sileo of Tri-State Historical Education Simulations will discuss a Revolutionary War battle fought nearby, with discussion augmented by a miniature diorama showing the battle's actions with hundreds of hand-painted soldiers
- Mountainside Rescue Squad will exhibit their history in honor of the Squad's 85th Anniversary
- Stop by next door at the restored Levi Cory House (circa 1818), open for visiting and shopping at the Village Shop

Parking lot on site.



Kenilworth

Oswald J. Nitschke House

49 South 21 St., Kenilworth
908-276-9090 | www.kenilworthhistoricalsociety.org

- Guided tours in English and Spanish of this circa-1880 authentically furnished home and its teaching garden of heirloom flowers, vegetables and herbs
- Multicultural garden-to-table demonstration
- Interactive living history program portrays the everyday life of a late 19th-/early 20th-century immigrant family in a developing suburb
- Exhibits: "100 Years and More of School Days in New Orange/Kenilworth" features historic photos, artifacts and "Voices from the Past"; "The Nitschke House — Then and Now" celebrates 20 years of progress since this home was saved, moved, restored and transformed into a living museum; and "New Orange/Kenilworth — A Melting Pot of Many Cultures"
- International music performed live on the open front porch
- Light refreshments

Grounds and building are wheelchair-accessible; elevator on site.

Free parking in front of building, on the street and in municipal lot across the street.



New Providence

Salt Box Museum ★

1350 Springfield Ave., New Providence
908-665-1034 | www.newprovidencehistorical.com

- Tours of this mid-1800s farmhouse, with Saltbox architecture and displaying fascinating artifacts
- Tools displayed outside: restored hay wagon, ice plow, early laundry implements including a hand-crank ringer — plus a spinning wheel demonstration

Offered Saturday only:

- **Guided Cemetery Tour** at New Providence Presbyterian Church, across from Salt Box at 1307 Springfield Ave., departing 1 pm and 2 pm: Learn the history of this cemetery and visit the graves of founding families and Revolutionary War soldiers on this 45-minute tour. Registration required. To register and request confirmation, email NPcemeterytours@gmail.com with name, preferred time and number of people.

Meet 10 minutes before departure time on the sidewalk by church parking lot. Sturdy shoes recommended.

- **Mason Room Archives of New Providence Historical Society:** View local maps, photos, newspapers, personal journals and records in the Mason Room, nearby at the rear of New Providence Memorial Library, 377 Elkwood Ave., New Providence. Building is wheelchair-accessible.

Park on the street for Salt Box Museum; in the church lot for the cemetery tour; or in the Library Lot for visiting the Mason Room.



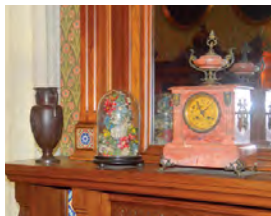
Plainfield

Drake House Museum ★

602 West Front St., Plainfield
908-755-5831 |
www.drakehouseplainfieldnj.org

- Tour this house, built in 1746, where George Washington consulted with his officers during and after the Battle of Short Hills (interior rooms are furnished to represent different eras)
- Reenactor from Living History Co., a Black-owned company providing living-history experiences for a diverse variety of eras and topics, specializing in Black history and culture

Grounds and 1st floor of building are wheelchair-accessible. Activities take place on 1st floor or outside, weather permitting. To park on site, enter at traffic light. Or park on side streets.



duCret Center of Art

1030 Central Ave., Plainfield
908-757-7171 |
www.ducrretarts.org

Open Saturday only.
Closed Sunday.

- This 1896 Colonial Revival building was originally the George Strong residence; later it was converted into a private school, then an art school, and is now duCret Center of Art — tour the first floor of the Strong Residence and see an exhibit of the Davis art collection

Parking lot on site has ample parking.



Rahway

African-American History & Heritage Learning Center

261 Central Ave., Rahway
732-382-0541 | www.ebenezeramechurch.com

Open Saturday only. Closed Sunday.

- Guided tours of this site, where an 1800s one-room schoolhouse once stood — the first public school for “colored children” in Rahway

Entrance at back is wheelchair-accessible.

Park in the church lot at 253 Central Ave. or on a local street.

Rahway

Merchants & Drovers Tavern Museum ★

1632 St. George Ave., Rahway
(corner of Westfield Ave.)
732-381-0441 |
www.merchantsanddrovers.org

- Tour this museum and restored historic building (once a tavern and a stagecoach stop); docents on hand will answer questions

Sunday only:

- Ongoing hearth-cooking demonstration in the tavern kitchen

Museum building and bathroom are wheelchair-accessible.

Parking available on grounds.



Union County Performing Arts Center

1601 Irving St., Rahway
732-499-8226 | www.ucpac.org

- Guided tours of this 1928 Vaudeville-era restored theater led by movie/theater historian and author Irv Hyatt, including: history of the theater; back stage; demonstration of the historic Wurlitzer organ with its sound effects and various connected instruments (such as drums, cymbals, xylophone); and explanation of the projection and movie system

The theater building is wheelchair-accessible, including elevator to second floor. Accessible parking spaces behind the building, with ramp into the building.

Parking available in lot behind the theatre, on the street, or in the spacious parking lot nearby at Hamilton Theatre on Hamilton St.



African-American History & Heritage Learning Center

261 Central Ave., Rahway
732-382-0541 | www.ebenezeramechurch.com

Open Saturday only. Closed Sunday.

- Guided tours of this site, where an 1800s one-room schoolhouse once stood — the first public school for “colored children” in Rahway

Entrance at back is wheelchair-accessible.

Park in the church lot at 253 Central Ave. or on a local street.

Roselle

Abraham Clark House ★

101 W. 9th Ave., Roselle
732-221-7211

- Exhibits and artifacts focus on the history of Roselle and the life of Abraham Clark — a signer of the U.S. Declaration of Independence

Ample street parking available.



Roselle Park

Roselle Park Historical Society & Museum

9 W. Grant Ave., Roselle Park | 908-245-1776

- Museum explores the history of Roselle Park, including exhibits about: *Education in the Borough Through the Years* and *Businesses of the Borough Through the Years*
- Preview of 2026: the USA's 250th and the Borough's 125th



*Building entrance is wheelchair-accessible (street level; no steps).
Parking available on nearby streets or in borough parking lots.*

Scotch Plains

Frazer House ★

1451 Raritan Rd., Scotch Plains
www.frazerhouse.org

- Display showcases the Phase 2 interior construction and addition of exterior restrooms (due to restoration work, the interior of house may not be open); a representative will answer questions about this 1700s farmstead and the significance of this location on The Battle of the Short Hills Historic Trail



Saturday only:

- Harvest Festival — with live music; food trucks; pumpkin sale; and activities for children including pony rides, games and pumpkin patch

Osborn Cannonball House Museum ★

1840 Front St., Scotch Plains
908-757-1885 (weekend) | www.historicalsocietyspnj.org

- Tour this 18th century house, which was struck by cannonball fire during the Battle of the Short Hills
- Learn about the accomplishments of the Osborns, one of the founding families of Scotch Plains — two brothers who grew up here were Revolutionary War soldiers and prolific master gravestone cutters. See photos of the stones, and an exhibit of the tools and methods used by these skilled tradesmen — whose work is still seen in NJ cemeteries.
- The Osborn house will be decorated as a “haunted” house; children can receive an early Halloween treat and make their own “ghost” doll



Park in the Municipal lot behind town hall or on street.

Scotch Plains

Shady Rest Country Club

820 Jerusalem Rd., Scotch Plains
908-490-1577 | www.preserveshadyrest.org

- Tours of this historic site, which was the first black-owned country club in the United States
- The John Shippen Museum
- FREE mini-golf
- Mini-golf putting contest

Saturday only (1–5 pm):

- Horseback riding

Sunday only:

- Live jazz music

Wheelchair-accessible building.

Parking lot on site, with accessible parking spaces.



Springfield

Cannon Ball House ★

126 Morris Ave., Springfield | 973-912-4464
www.springfieldhistoricalsociety.webs.com

- Self-guided tour of the first floor of this Colonial home that survived the Revolutionary War, featuring 1700s artifacts in the library, parlor, dining room and colonial kitchen
- “School Days” exhibit of items from the archives, including a desk from the old schoolhouse on Academy Green, and a 20th-century championship ring and varsity jacket — see what has changed and what has remained the same



Saturday only:

- New Jersey 3rd Regiment “Jersey Blues” interpreters present soldiers from the Revolutionary War era — see firsthand what the soldiers wore and carried, how camp was set up, and what was required of them during the War for Independence.

Entrance via rear door is just one step up, but building is not wheelchair-accessible by ramp.

Limited on-site parking; enter building via rear door.

Summit

Carter House

90 Butler Parkway, Summit
908-277-1747 | www.summithistoricalsociety.org

- Self-guided tour of this circa-1741 cottage, with docents on hand to answer questions: Colonial kitchen; Victorian-era library with a painting by Hudson River School artist Worthington Whittredge; Summit artifacts
- Shop offers handmade items and gifts with local themes
- The May Room houses the official archives for the City of Summit, including photos, postcards, family histories, scrapbooks, obituaries, house history files, maps, city directories, and 100 years of Summit High School yearbooks.
- 1920s Fire Dept. engine on display in the garage — taking photos is encouraged, with wintertime props available for holiday cards



May Room archives are wheelchair-accessible via ramp from gravel parking lot; remainder of house/museum is one step up. Ample free parking on the street, or park in the gravel lot on site.

Reeves-Reed Arboretum

165 Hobart Ave., Summit
908-273-8787 | www.reeves-reedarboretum.org

Open Sunday only. Closed Saturday.

- Historic public garden, education resource center, and living history museum on 13.5 acres of pastoral lawns and woodland trails (grounds open Sunday 7 am–7 pm)
- See Beacon Signal Fire #10, a replica of the original Revolutionary War beacon, on the Wildflower Trail
- Wisner House (open Sunday 10 am–4 pm) features photographs, books, historical documents and artifacts from the families who made this estate their home



Buildings are wheelchair-accessible. Gardens and grounds are wheelchair-accessible in some areas. Visit the Visitors Center on arrival and refer to the map and guide for details.

Park on site, across the street or in surrounding residential area (observe all parking regulations).

Summit

Twin Maples

214 Springfield Ave., Summit
908-273-0301 | www.twinmaplessummit.org

- Guided tours of this Colonial Revival estate home built in 1908, with a facade resembling the White House, a lavish entry hall, a ballroom, and a ladies' "secret bath" tucked beneath the staircase



Parking lot on site.

Wallace Chapel A.M.E. Zion Church

138-142 Broad St., Summit

- Tour the church and grounds, both days

Saturday at 12 noon & Sunday at 1 pm:

- Lecture by Rev. Dr. Denison D. Harrield, Jr. about the history of the Wallace Chapel and Dr. Florence S. Randolph, the activist and spiritual leader who advocated for justice, equality, equity, civil rights and women's suffrage



Building is wheelchair accessible.

Parking lot at rear of church.

Street parking also available.

Union

Caldwell Parsonage

909 Caldwell Ave., Union
908-687-7977 | www.unionhistory.org or www.uniontwphistoricalsociety.webs.com

- First-person interpreter will narrate the history of this historic site as the Reverend James Caldwell
- Making butter an old-fashioned way
- Using a wringer washing machine
- DIY Christmas ornaments and coasters
- Family/children's activities include: creating tricorne hats and colonial-style bonnets, making "church" dolls, and playing colonial and Native American games
- Shop for souvenirs



Building is wheelchair-accessible.

On-street parking; municipal parking lot one block away.

Union

Congressman Donald M. Payne Vauxhall Meeting Center

333 Russell St., Vauxhall (Union)
908-688-2797 | vhs1860@yahoo.com

- Displays and historical information highlight the Vauxhall section of the Township of Union, presented by the Vauxhall Historical Society

Building is wheelchair accessible and fully ADA-compliant.

Parking lot is across the street from Jefferson School; school also has a parking lot.



Connecticut Farms Church ★

888 Stuyvesant Ave., Union
908-688-3164 | www.ctfarms.org

- Tours of both the church (with opportunity to ring the church bell!) and the historic cemetery, which holds graves of soldiers who fought for American independence, as well as Hessian and British soldiers
- Church artifacts on display in the Parlor
- Sale of baked goods and handcrafts



Parking lot in back of the church, off of West Chestnut Street; then enter at front of church.

Westfield

Miller-Cory House Museum ★

614 Mountain Ave., Westfield
908-232-1776 | www.millercoryhouse.com

- Docent-led tours of this fully furnished circa-1740 farmhouse
- Showcasing eighteenth-century colonial cuisine, with authentic colonial-era open-hearth cooking using period recipes and techniques
- Felt-making demonstration

Park in on-site lot or on surrounding side-streets.



Westfield

Reeve History & Cultural Resource Center

314 Mountain Ave., Westfield
908-654-1794 | www.westfieldhistoricalsociety.org

- Docent tours of this circa-1875 Italianate Victorian-era residence
- Special exhibit of military and other historic artifacts from the Westfield Historical Society Archives
- Self-guided tour of the Reeve gardens



Saturday only:

- Westfield Historical Society's AppleFest celebration, held outdoors on the lawn

Outdoor activities are wheelchair-accessible. Building interior is not wheelchair-accessible; a virtual tour of the interior is available on the website.

Limited parking in the on-site lot; street parking also available.

Union County Across the Centuries

Union County history trading cards are available at most of the historic sites listed in this booklet. Dozens of cards are available to collect.



COUNTY OF UNION

Board of County Commissioners

Sergio Granados, *Chairman*
Kimberley Palmieri-Mouded, *Vice Chairwoman*
James E. Baker, Jr.
Joseph C. Bodek
Dr. Angela R. Garretson
Bette Jane Kowalski
Lourdes M. Leon
Alexander Mirabella
Rebecca Williams

Edward T. Oatman, *County Manager*
Amy Crisp Wagner, *Deputy County Manager*
James E. Pellettiere, *Clerk of the Board*

Department of Parks and Recreation

Victoria Durbin-Drake, *Director*

Office of Cultural and Heritage Affairs

Kathy Kakalettris, *Administrator*
John Prescott, *History Programs Coordinator*

633 Pearl Street, Elizabeth, NJ 07202
908-558-2550 | NJ Relay 711
culturalinfo@ucnj.org • www.ucnj.org/cultural



Made possible in part by funds from
the New Jersey Historical Commission,
a division of the Department of State



A Service of the Union County
Board of County Commissioners

Union County
We're Connected to You!

www.ucnj.org

